



The 7th Asia Pacific IAP Congress

May 20-24, 2011

Main Theme

**Pathogens, Genomics, and Challenges
of Pathology in the 21st Century**

Final Program



Host division

The Taiwan Division of the International Academy of Pathology

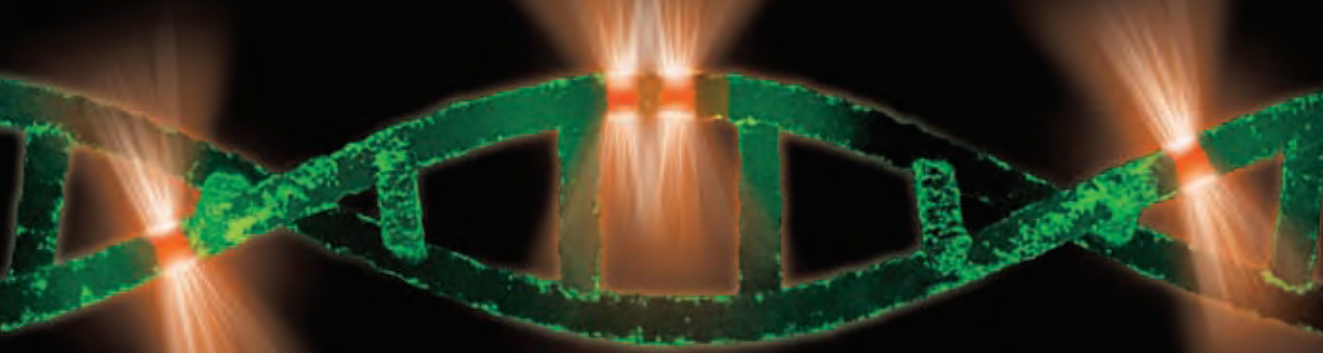
Organized by

Taiwan Society of Pathology

EGFR mutation testing: guiding treatment for advanced non-small-cell lung cancer (NSCLC)

Monday 23 May 2011, 12.30–14.00

Banquet Hall, 3rd floor, Taipei International Convention Center



Advances in molecular diagnostics have heralded a new era of personalised therapy in oncology enabling patients to receive new targeted treatments, tailored to the specific characteristics of their tumour. Pioneering this change in clinical practice for advanced NSCLC is the use of epidermal growth factor receptor (EGFR) mutation testing. Clinical studies have shown that for patients with advanced NSCLC whose tumours carry activating EGFR mutations, first-line treatment with an EGFR tyrosine kinase inhibitor can lead to improved clinical outcomes compared with doublet chemotherapy.¹⁻³ This symposium will highlight the importance of confirming a patient's EGFR mutation status in guiding treatment decisions for advanced NSCLC and summarise current best practice for delivering EGFR mutation testing. The challenges and key considerations for pathologists, working within a multidisciplinary team, in delivering EGFR mutation testing will be explored through plenary sessions from leading experts and extended panel discussions.

P R O G R A M M E

Chairman's welcome and introduction

Teh-Ying Chou (Taiwan)

Clinical outcomes in advanced NSCLC: the importance of EGFR mutation testing

Kaoru Kubota (Japan)

EGFR mutation testing: the pathologist's role in guiding treatment decisions

Manuel Salto-Tellez (UK)

Panel discussion

All

Closing remarks

Teh-Ying Chou (Taiwan)

References

1. Mok *et al.* N Engl J Med 2009; 361: 947-957.
2. Mitsudomi *et al.* Lancet Oncol 2010; 11: 121-128.
3. Maemondo *et al.* N Engl J Med 2010; 362: 2380-2388.

C O N T E N T S

Organizing Committee & Faculty

Organizing Committee	0
----------------------	---

Welcome Message	0
-----------------	---

Program at a Glance	0
---------------------	---

Floor Plan & Exhibition	0
-------------------------	---

General Information	0
---------------------	---

Operation Time	0
----------------	---

Instructions for Oral Presentation	0
------------------------------------	---

Social Program	0
----------------	---

Optional Tours	0
----------------	---

Acknowledgement	0
-----------------	---

Scientific Programme	0
----------------------	---

Keynote Speaker

Plenary Speakers

Professor Wun-Ju Shieh (USA)	0
------------------------------	---

Professor Ih-Jen Su (Taiwan)	0
------------------------------	---

Professor Sunil Lakhani (Australia)	0
-------------------------------------	---

Professor Elías Campo (Spain)	0
-------------------------------	---

Professor Robin Cooke (Australia)	0
-----------------------------------	---

Professor Marc Ladanyi (USA)	0
------------------------------	---

Professor Jonathan Epstein (USA)	0
----------------------------------	---

Symposium Session

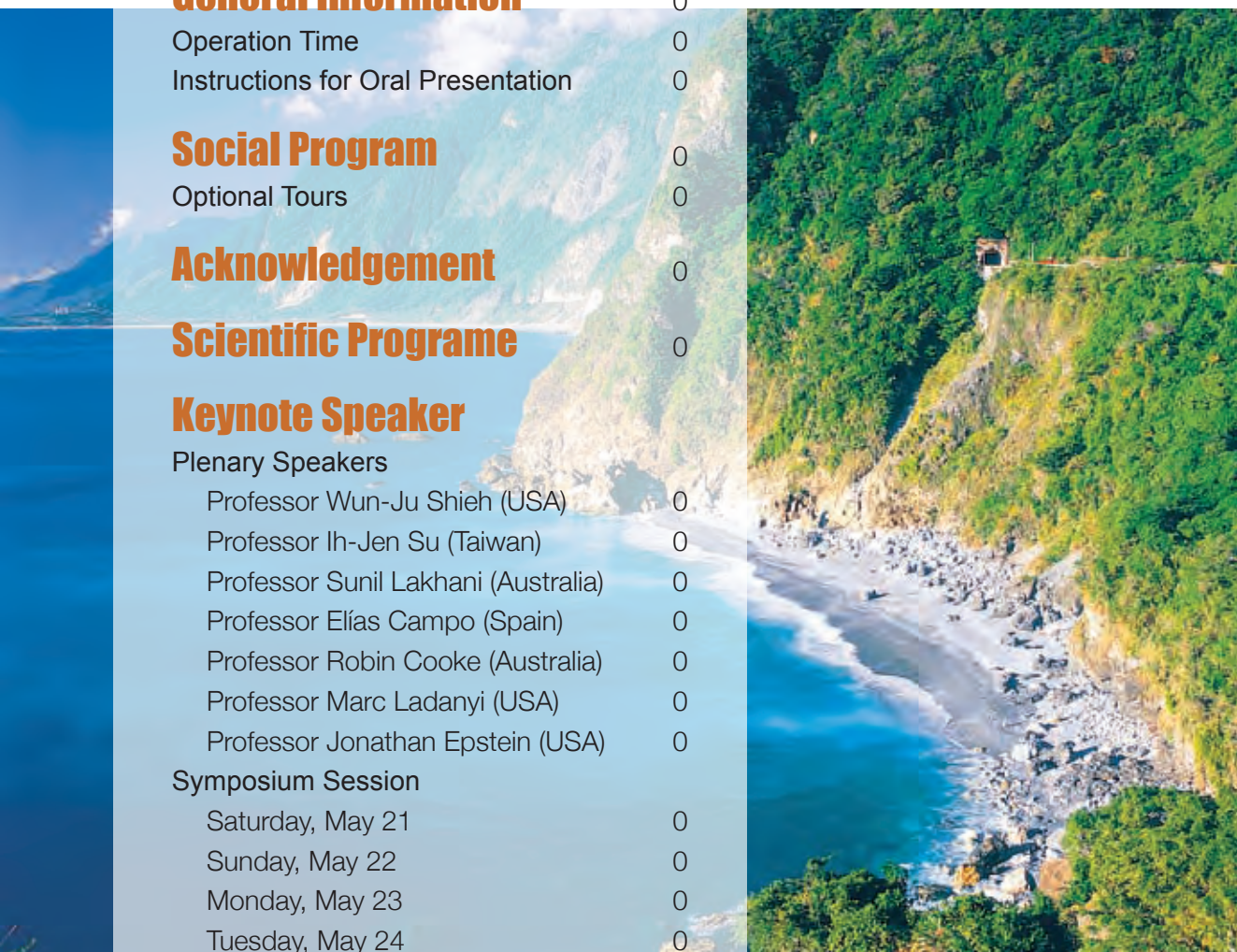
Saturday, May 21	0
------------------	---

Sunday, May 22	0
----------------	---

Monday, May 23	0
----------------	---

Tuesday, May 24	0
-----------------	---

Poster Session	0
----------------	---



The 7th Asia Pacific IAP Congress Organizing Committee

Organizing Committee

Congress President	Shih-Ming Jung	
Secretary General	Jan-Show Chu	
Treasurer	John Wang	Chiung-Ru Lai
Advisors	Tseng-tong Kuo (Taiwan)	Ho-Keung Ng (Hong Kong)

Scientific Committee

Chairman	Ih-Jen Su		
Vice Chair	Shiu-Feng Huang		
Convenors	Chee-Yin Chai	Chi-Long Chen	Teh-Ying Chou
	Nan-Haw Chow	Shih-Sung Chuang	Hock-Liew Eng
	Donald Ming-Tak Ho	Chih-Yi Hsu	Cheng-Hsiang Hsiao
	Chuen Hsueh	Hsuan-Ying Huang	Chao-Cheng Huang
	Yin-Tai Jin	Tseng-tong Kuo	Chiung-Ru Lai
	Chin-Cheng Lee	J. Yu-Yun Lee	Ming-Chieh Lin
	Chin-Chen Pan	Kai-Ping Shaw	Chia-Tung Shun
	Ming-Tse Sung	An-Hang Yang	Cheng-Ping Yu
	Chung-Tai Yue		
International Convenors	Susan Abraham (USA)	Serena Bagnasco (USA)	Thomas Brenn (UK)
	Carmen Cerda-Aguilar (Chile)	Yao-Tseng Chen (USA)	Liang Cheng (USA)
	Angela Chong (Singapore)	Wen-Ming Cong (China)	Christopher P. Crum (USA)
	John N. Eble (USA)	Andrew Field (Australia)	Jorge Reis Filho (UK)
	Raquel Fortun (Philippines)	Hideki Hasegawa (Japan)	Lewis Hassell (USA)
	Soon Won Hong (Korea)	Takanori Hirose (Japan)	Masanori Hisaoka (Japan)
	Gerard Jansen (Canada)	Ryohei Katoh (Japan)	Günter Klöppel (Germany)
	In Sun Kim (Korea)	Young Hyeh Ko (Korea)	Geon Kook Lee (Korea)
	Gandi Li (China)	Kiat Hon Tony Lim (Singapore)	Hong-Gang Liu (China)
	Liang Liu (China)	Joe Muchou Ma (USA)	Toshiaki Manabe (Japan)
	Guido Martignoni (Italy)	Osamu Matsubara (Japan)	Kentaro Matsuoka (Japan)
	Yoshiki Mikami (Japan)	Toshio Morohoshi (Japan)	Toshitaka Nagao (Japan)
	Yasuni Nakanuma (Japan)	Norimichi Nemoto (Japan)	Ho-Keung Ng (Hong Kong)
	Kurt B. Nolte (USA)	Koichi Ohshima (Japan)	Robert Y. Osamura (Japan)
	Chan-Kum Park (Korea)	Yong-Koo Park (Korea)	Jae Y. Ro (USA)
	Takashi Saku (Japan)	Fernando Schmitt (Portugal)	Richard Scolyer (Australia)
	Ie-Ming Shih (USA)	Wun-Ju Shieh (USA)	Bel Philip SL (Hong Kong)
	Dong-Feng Tan (USA)	Puay Hoon Tan (Singapore)	Yukichi Tanaka (Japan)
	Swan Thung (USA)	Ka Fai To (Hong Kong)	Gary Tse (Hong Kong)
	Helen Wang (USA)	Howard Wu (USA)	Tsung-Teh Wu (USA)
	Tzyy-Chouu Wu (USA)	Matthew M. Yeh (USA)	Giuseppe Zamboni (Italy)
Exhibition Committee	Liang-Che Chang		
Social Program Committee	Ling Lee	Chiung-Ru Lai	

Message from the Congress President

Dear Colleagues,

As the Congress Organizer, it gives us great pleasure to welcome you to the 7th Asia Pacific IAP Congress, which will be held in Taipei, Taiwan, from May 20-24, 2011.

Taipei, a fascinating metropolis, has much to offer: a variety of attractions such as the National Palace Museum, Taipei 101, the landmark skyscraper, endless choices of mouth-watering cuisines, high quality yet inexpensive electronic products, the unique night markets, the list goes on.

The theme of our Congress is "Pathogens, Genomics, and Challenges of Pathology in the 21st Century". The full scientific program will include keynote lectures, symposia, slide seminars, and poster sessions. Many distinguished figures and active researchers have been invited as speakers who will provide participants with the latest updates and a glimpse into the state-of-the-art practices and developments in the future. Besides the academic activities, you will have the opportunity to meet friends both old and new through the well-planned social program.

Once again, with open arms and warm regards, we welcome you all to Taipei!



Shih-Ming Jung

Congress President

The 7th Asia Pacific IAP Congress

Message from the Chair and Vice-Chairperson of Scientific Committee of the 7th Asia Pacific IAP Congress

Dear Colleagues and Friends,

The Taiwan Society of Pathology and Taiwan Division of IAP shared the privilege to co-sponsor the APIAP 2011 Conference to be held in Taipei. Ever since August 2009, the convenors of the Scientific Committee of APIAP 2011 have started working on the theme and focus of the Conference. It is unanimously agreed that this Conference should highlight the status of the current advances and future directions of pathology research.



Furthermore, the Scientific Program should reflect pathology and diseases which characterize this region. In the Asia-Pacific area, infectious diseases are wide-spread and it has not been long after the outbreaks of SARS and Mexican H1N1. Furthermore, the virus-associated human cancers are also prevalent in this region. Therefore, we have settled on the pathology of microbial infections as the major thematic concern of the Conference. In view of the dawning of the revolutionary era of genomics, the topic of molecular pathology and genomics also come to mind. The recent advances in clinical oncology has forced pathologists to play a critical role in the teamwork of patient service. We therefore proposed "Pathogens, Genomics, and Challenges of Pathology in the 21st Century" as the theme of the APIAP2011 Conference. The topics in each session then follows the spirit of the Conference theme but additionally, it also features prevalent diseases in different Asia-Pacific regions so that we can exchange information and learn from each other's experiences.

The enthusiastic responses from our member with regard to the Scientific Program were overwhelming. We are very pleased to announce that the final Scientific Program does indeed reflect our original goal. It is now the aim of the Scientific Committee to promote the education program to nurture young pathologists and to encourage their attendance by providing travel awards, who face very entirely different challenges such as the legal issue.

In closing, we would like to express our sincere thanks to all the Scientific Committee Members for their efforts and contribution. Last but not least, we owe our thanks also to the government, private institutions and companies who sponsor this Conference. without whose financial support, this Conference cannot achieve a successful outcome.

Ih-Jen Su

Chairperson of Scientific Committee
The 7th Asia Pacific IAP Congress

Shiu-Feng Huang

Vice-Chair of Scientific Committee
The 7th Asia Pacific IAP Congress

Message from Chairman of Education Committee and the Vice-President for Asia, IAP

Dear colleagues in pathology,

It is my great pleasure to welcome you to the Seventh Asia Pacific International Academy of Pathology (APIAP) Congress in the beautiful and vibrant city of Taipei. The International Academy of Pathology, the largest international society of anatomical pathologists in the world, encourages local and regional divisions to organize their own educational events, aside from the biennial IAP international congresses. I am pleased to report that the IAP has now officially recognized the Asia Pacific pathologists' group as the Assembly of Asia Pacific Pathologists as a result of our activities. Recent highly successful APIAP congresses were held in Bangkok, Beijing, Singapore and Kochi. We are the first regional pathologists to gain this status and have set a fine example of collaboration for regional IAP divisions globally. I am pleased to report that APIAP (<http://www.acp.cuhk.edu.hk/app>) is now under the capable leadership of Professor Bob Osamura of Japan and the Secretary is Dr. Gary Tse from Hong Kong.



Many years ago, the IAP set up the Education Committee to co-ordinate and promote international pathology education in the period between the biennial IAP congresses; in fact, it was first called "Intercongress" Committee. It has been superbly led by Professors Antonio Llombart-Bosch and Kristian Henry successively. I am extremely privileged to have inherited this position recently and can assure everyone that the Education Committee will spare no effort to work with national and regional divisions to see how best the educational needs of pathologists in the world can be served. Please let me know should you have any suggestion on this (hkng@cuhk.edu.hk).

Dr. Shih-Ming Jung, Dr. Shiu-Feng Huang and Professor Ih-Jen Su have put together a fascinating and comprehensive programme for this congress, with an array of international experts. I have no doubt this congress will set another benchmark for future IAP work.

The local and international organizing committees are delighted that you are here. You will be part of an emerging Asia Pacific pathology.

Sincerely,

H.K. Ng

Chairman, Education Committee and Vice-President

Message from the Convener

Dear Asian Pacific Colleagues,

First of all, it gives me enormous pleasure in announcing the forthcoming APIAP 2011 (the 7th Asia Pacific IAP Congress) which will be held in Taipei. The Congress theme is aptly entitled “Pathogens, Genomics, and Challenges of Pathology in the 21st Century”.

It promises to be a remarkable occasion for all to meet in Taipei, not only because of the scientific streams, but also because of the mutual friendships we are able to forge among peers in the Asia-Pacific region. Dr. Shih-Ming Jung, the Congress President, and Dr. Ih-Jen Su, the Chairperson of the Scientific Committee, and all the other dedicated members of the Organizing Committee have done an excellent job in putting together such an attractive program. In addition to the Asia Pacific attendees and speakers, we also welcome guest speakers from other continents or regions as well.

As you know, the Asia Pacific Divisions have now been defined as the IAP “Division” representing regional activities as a whole. Our activities are expected to serve as a model for other continents or regions who we hope will also initiate such “Regional Divisions”. I am very happy to see this happening and take great pride in it. When we visit the APIAP website, we can see a very comprehensive scientific program including keynote lectures and symposia among others. The social program and optional tours are wonderfully planned and presented. We are all very much looking forward to attending the Congress and to joining in the social activities.

I wish you a successful Congress and extend a warm welcome to all. Enjoy our wonderful city of Taipei!



Robert Y. Osamura

Convener

Asia Pacific Divisions of IAP

Message from Founding President of Taiwan IAP Division

Dear Colleagues and Friends,

It is with great pleasure that I welcome you all to the 7th Asia Pacific International Academy of Pathology Congress being held in such a vibrant and attractive city of Taipei. The Taiwan IAP Division was established in 2005 as a means to gain access to academic activities of the IAP community. This year we are privileged to host the biennial regional Congress. Our goal is to provide educational opportunities for participating delegates at large, to promote academic interactions among pathologists, and last but not least, to foster lasting friendships among members from different IAP Divisions.



The major concern of this meeting is the emerging infectious diseases and molecular genetics of neoplasms. I would like to take this opportunity to express my thanks to Dr. Shih-Ming Jung, the Congress President and the members of the Scientific Committee headed by Dr. Ih-Jen Su, who have all contributed greatly in organizing a stimulating program and a timely Congress. With so many distinguished speakers from around the world, I am sure you will find this event an invaluable and fruitful experience.

This is the first large scale International Pathology Congress ever held in Taipei. It is our hope that overseas delegates will also take this opportunity to visit some scenic attractions and experience various cultural activities in Taiwan.

I wish you all an unforgettable stay in Taipei and bring home many happy memories!

Tseng-tong Kuo

Founding President
Taiwan IAP Division

Program at a Glance

Time	Day 1 5/20 (Friday)	Time	Day 2 5/21 (Saturday)
		0915-0930	1F, Room 101 Opening Ceremony
		0930-1030	1F, Room 101 Plenary Session 1 (PS01) Going Forth to the Past: The Roles of Pathologists in Studying Emerging Infectious Diseases Wun-Ju Shieh (USA)
		1030-1100	Coffee Break
		1100-1200	1F, Room 101 Plenary Session 2 (PS02) Pathogenesis and Therapeutic Implication of Virus-Associated Human Cancers Ih-Jen Su (Taiwan)
		1200-1400	3F, Banquet Hall Lunch
		1230-1330	Plenary Session 3 (PS03) Molecular Markers in Breast Cancer: Prognostic and Therapeutic Implications Sunil Lakhani (Australia)
		1400-1530	1F, Room 101A A01-S01 Education & Ethical Issue
		1530-1600	1F, Room 101B A02-S03 Endocrine Pathology
		1600-1730	1F, Room 101C A03-S04 Pancreatic Pathology
			Coffee Break
			1F, Room 101D A04-S05 Pediatric Pathology
			1F, Room 102 A05-S02 Dermatopathology
1400-1800	Registration		1F, Room 101A A01-S01 Education & Ethical Issue
			1F, Room 101B A02-S03 Endocrine Pathology
			1F, Room 101C A03-S04 Pancreatic Pathology
			1F, Room 101D A04-S05 Pediatric Pathology
			1F, Room 102 A05-S02 Dermatopathology
	2F, Int'l Lounge		3F, Banquet Hall
1830-2030	Speaker's Night (by Invitation Only)	1830-2030	Welcome Reception

Time	Day 3 5/22 (Sunday)				
0830-1000	1F, Room 101A A06-S08 Hematopathology	1F, Room 101B A07-S06 Gynecology Pathology	1F, Room 101C A08-S09 Breast Pathology	1F, Room 101D A09-S10 Lung Pathology	1F, Room 102 A10-S07 Cytopathology
1000-1030	Coffee Break				
1030-1130	1F, Room 101A A06-S08 Hematopathology	1F, Room 101B A07-S06 Gynecology Pathology	1F, Room 101C A08-S09 Breast Pathology	1F, Room 101D A09-S10 Lung Pathology	1F, Room 102 A10-S07 Cytopathology
1140-1230	3F, Plenary Hall				
	Plenary Session 4 (PS04) From Molecular Genetics to Biomarkers for Cancer Diagnosis and Treatment: Malignant Lymphoma as a Model Elias Campo (Spain)				
1230-1400	2F, Int'l Lounge Lunch Symposium (LS01) [Abbott Molecular]	3F, Banquet Hall Lunch Symposium (LS02) [Polowang Co., Ltd]	4F, VIP Room Lunch Symposium (LS03) [BD Diagnostics]	3F, Plenary Hall Taiwan Society of Pathology Annual Business Meeting	
1400-1530	1F, Room 101A A06-S08 Hematopathology	1F, Room 101B A07-S06 Gynecology Pathology	1F, Room 101C A08-S09 Breast Pathology	1F, Room 101D A09-S10 Lung Pathology	1F, Room 102 A10-S07 Cytopathology
1530-1600	Coffee Break				
1600-1700	1F, Room 101A A06-S08 Hematopathology	1F, Room 101B A07-S06 Gynecology Pathology	1F, Room 101C A08-S09 Breast Pathology	1F, Room 101D A09-S10 Lung Pathology	1F, Room 102 A10-S07 Cytopathology
1800-1900	3F Le Grand Ballroom, Le Meridien Taipei Plenary Session 5 (PS05) Changes in Disease Patterns in the 20 th Century Robin Cooke (Australia) (by Invitation Only)				
1900-2130	Gala Dinner (by Invitation Only)				

Program at a Glance

Day 4 5/23 (Monday)				
Time	Registration / Exhibition / Poster Presentation (101, 103 Hallway)			
0830-1000	1F, Room 101A A11-S12 Liver Pathology	1F, Room 101B A12-S13 Infectious Disease	1F, Room 101C A13-S15 Molecular Pathology I	1F, Room 101D A15-S14 Head & Neck Pathology A16-S11 Bone and Soft Tissue Pathology
1000-1030	Coffee Break			
1030-1130	1F, Room 101A A11-S12 Liver Pathology	1F, Room 101B A12-S13 Infectious Disease	1F, Room 101C A13-S15 Molecular Pathology I	1F, Room 101D A15-S14 Head & Neck Pathology A16-S11 Bone and Soft Tissue Pathology
1140-1230	3F, Banquet Hall Plenary Session 6 (PS06) Molecular Genetics in Sarcoma Marc Ladanyi (USA)			
1230-1400	2F, Int'l Lounge Lunch Symposium (LS04) [The UK National External Quality Assessment Scheme for Immunocytochemistry and In Situ-Hybridisation]		4F, VIP Room Lunch Symposium (LS05) [AstraZeneca]	
1400-1530	1F, Room 101A A11-S12 Liver Pathology	1F, Room 101B A12-S13 Infectious Disease	1F, Room 101C A14-S16 Quality Assurance	1F, Room 101D A15-S14 Head & Neck Pathology A16-S11 Bone and Soft Tissue Pathology
1530-1600	Coffee Break			
1600-1730	1F, Room 101A A11-S12 Liver Pathology	1F, Room 101B A12-S13 Infectious Disease	1F, Room 101C A14-S16 Quality Assurance	1F, Room 101D A15-S14 Head & Neck Pathology A16-S11 Bone and Soft Tissue Pathology
Free Evening				

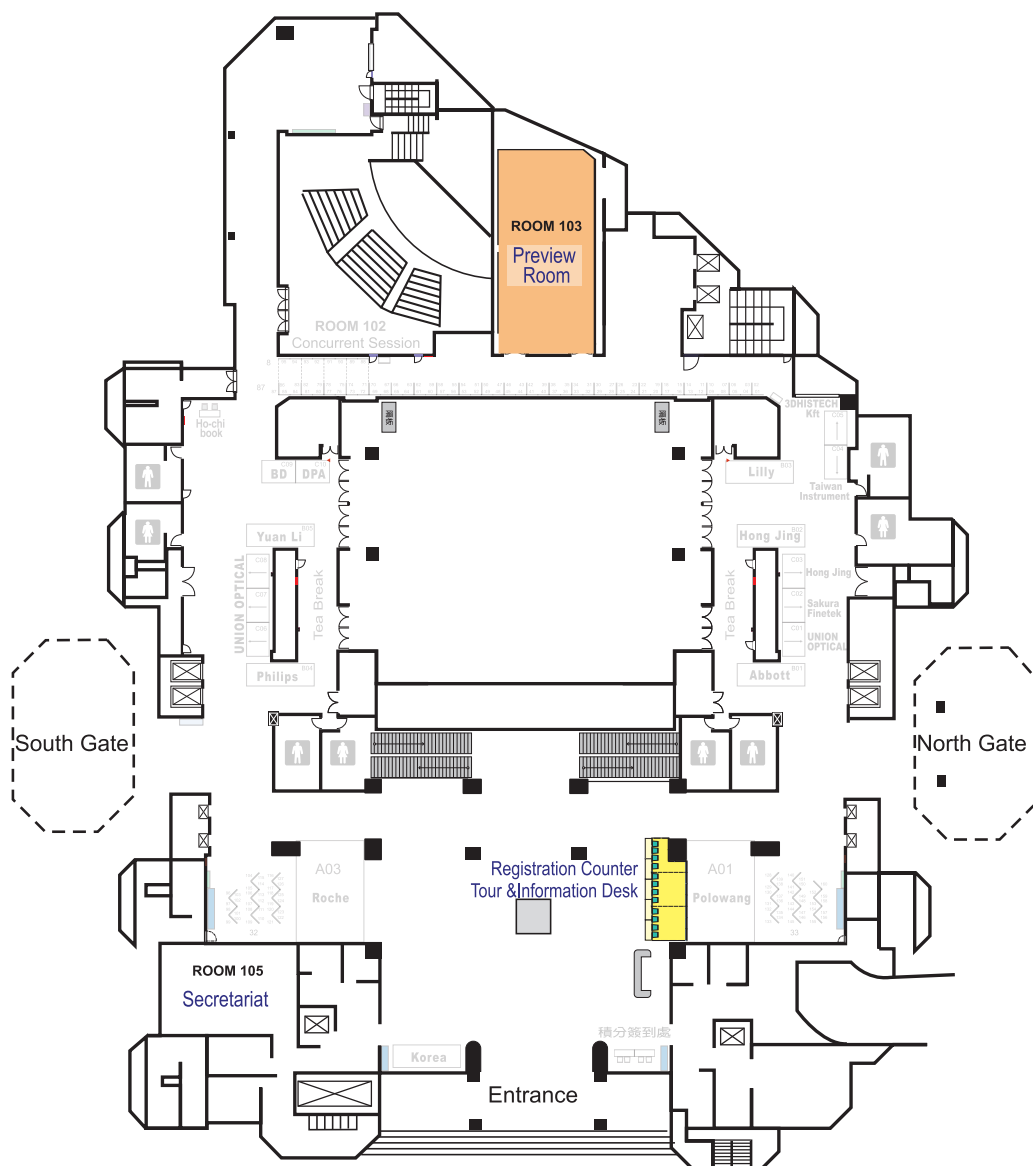
Day 5 5/24 (Tuesday)						
Time	Registration / Exhibition / Poster Presentation (101, 103 Hallway)					
0830-1000	1F, Room 101A A17-S17 Neuropathology	1F, Room 101B A18-S18 Gastrointestinal Pathology	1F, Room 101C A19-S22 Molecular Pathology II	1F, Room 101D A20-S20 IgG4-related Diseases	1F, Room 102 A21-S19 Genitouropathology	2F, Room 201DE A22-S21 Forensic Pathology
	Coffee Break					A23-S23 Cross-Strait Forum
1000-1030	1F, Room 101A A17-S17 Neuropathology	1F, Room 101B A18-S18 Gastrointestinal Pathology	1F, Room 101C A19-S22 Molecular Pathology II	1F, Room 101D A20-S20 IgG4-related Diseases	1F, Room 102 A21-S19 Genitouropathology	2F, Room 201DE A22-S21 Forensic Pathology
1030-1130	3F, Banquet Hall					
	Plenary Session 7 (PS07) Medicolegal Issues for Pathologists: General Concepts and Specific Cases Relating to Genitourinary Pathology Jonathan Epstein (USA)					
1140-1230	3F, Banquet Hall					
	Lunch Symposium (LS06) [Novartis Oncology]					
1230-1400	1F, Room 101A A17-S17 Neuropathology	1F, Room 101B A18-S18 Gastrointestinal Pathology		1F, Room 101D A20-S20 IgG4-related Diseases	1F, Room 102 A21-S19 Genitouropathology	2F, Room 201DE A22-S21 Forensic Pathology
1400-1530						
1530-1600	Coffee Break					
1600-1730	1F, Room 101A A17-S17 Neuropathology	1F, Room 101B A18-S18 Gastrointestinal Pathology		1F, Room 101D A20-S20 IgG4-related Diseases	1F, Room 102 A21-S19 Genitouropathology	2F, Room 201DE A22-S21 Forensic Pathology
Free Evening						

Floor Plan & Exhibition

Friday, May 20, 2011

1F

Registration Counter	North Side of Lobby
Tour & Information Desk	North Side of Lobby
Preview Room	Rm 103
Secretariat	Rm 105

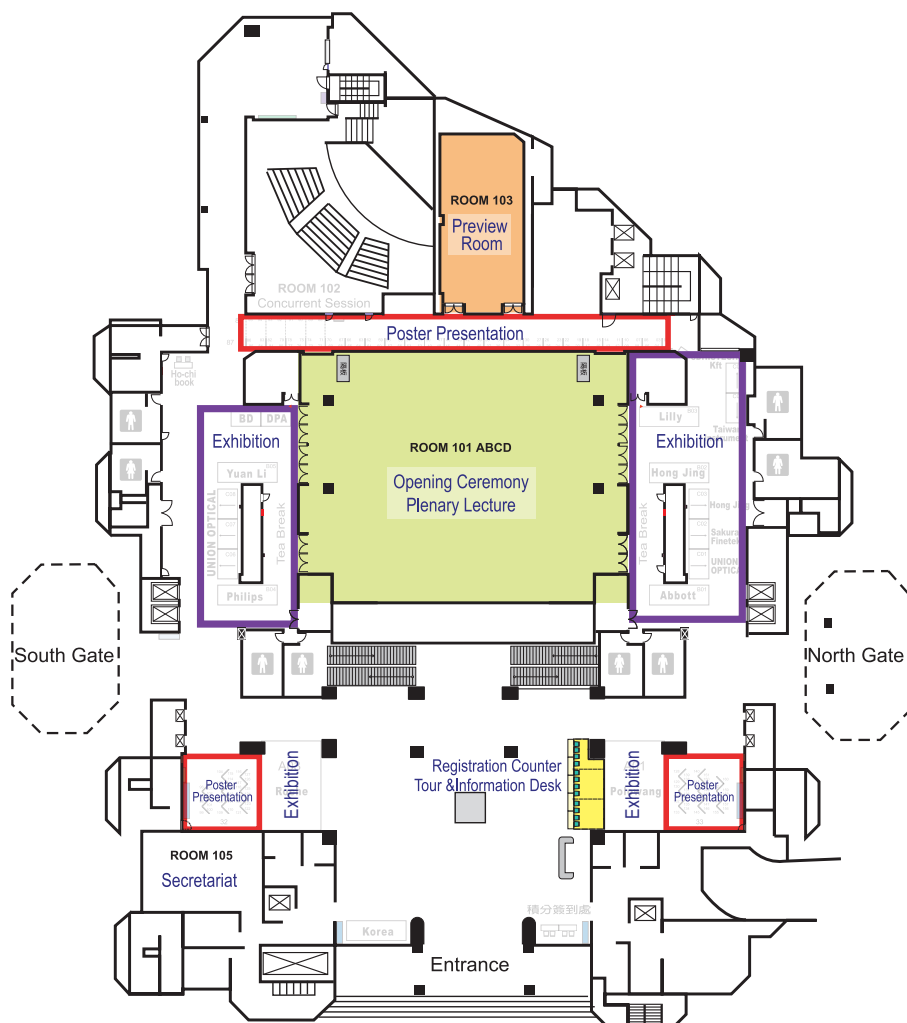


Saturday, May 21, 2011

1F

May 21 09:00-12:00

Registration Counter	North Side of Lobby
Tour & Information Desk	North Side of Lobby
Opening Ceremony	Rm 101 A/B/C/D
Plenary Lecture	Rm 101 A/B/C/D
Preview Room	Rm 103
Poster Presentation	Rm 103 Hallway/North & South Side of Lobby
Secretariat	Rm 105
Exhibition	Rm 101/North/South Hallway



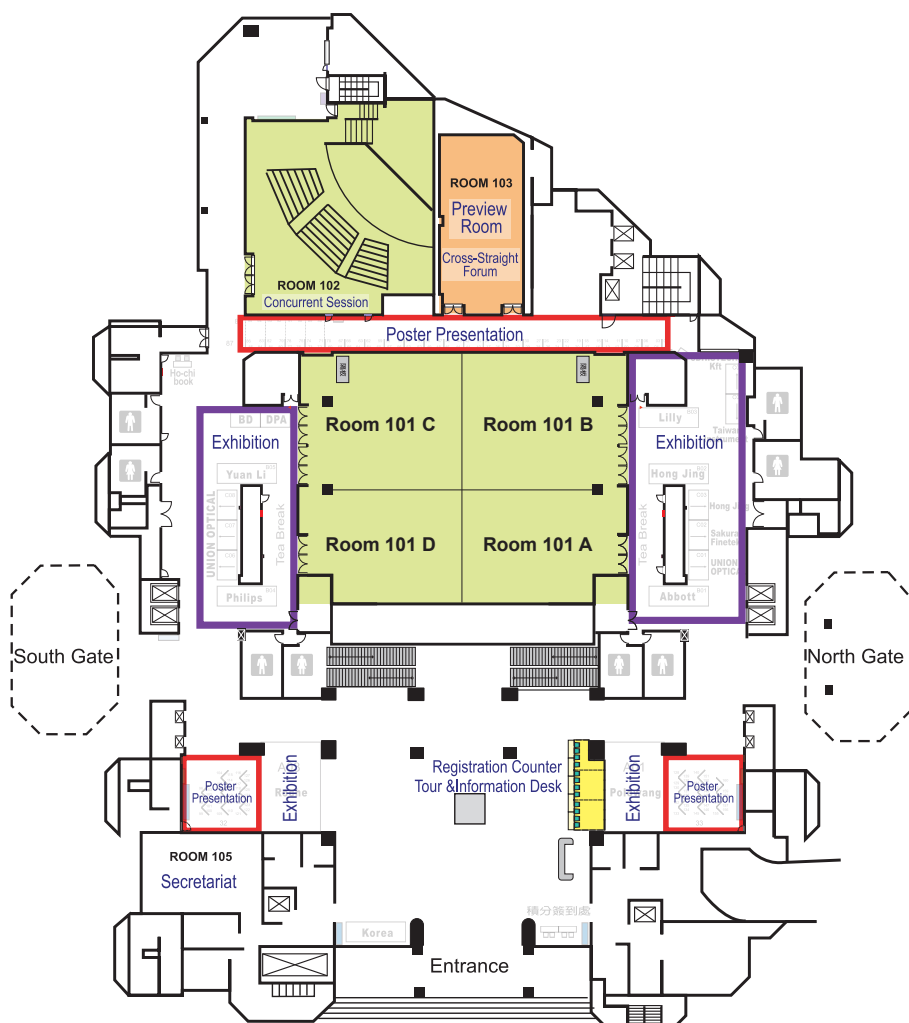
Floor Plan & Exhibition

Saturday-Tuesday, May 21-24, 2011

1F

May 21 12:00-17:30 ~ May 24

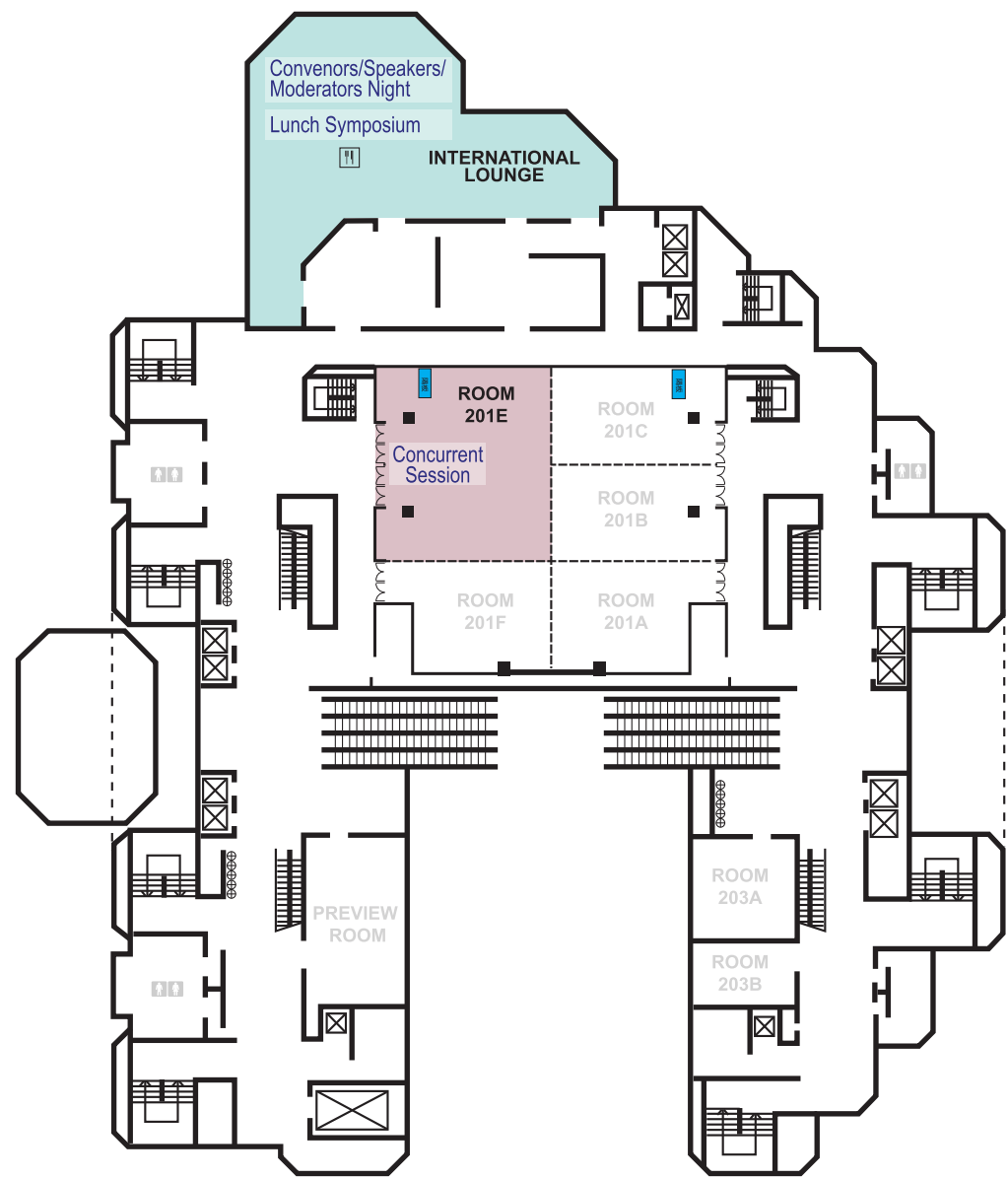
Registration Counter	North Side of Lobby
Tour & Information Desk	North Side of Lobby
Concurrent Session	Rm 101 A/B/C/D
Concurrent Session	Rm 102
Preview Room/Cross-Straight Forum	Rm 103 (May 20-23 / May 24)
Poster Presentation	Rm 103 Hallway / North & South Side of Lobby (May 21-24)
Secretariat / Preview Room	Rm 105 (May 20-24 / May 24)
Exhibition	Rm 101/North/South Hallway



Friday-Tuesday, May 20-24, 2011

2F

Concurrent Session	Room 201DE (May 24)
Lunch Symposium	International Lounge (May 22-24)
Convenors/Speakers/Moderators Night	International Lounge (May 20)

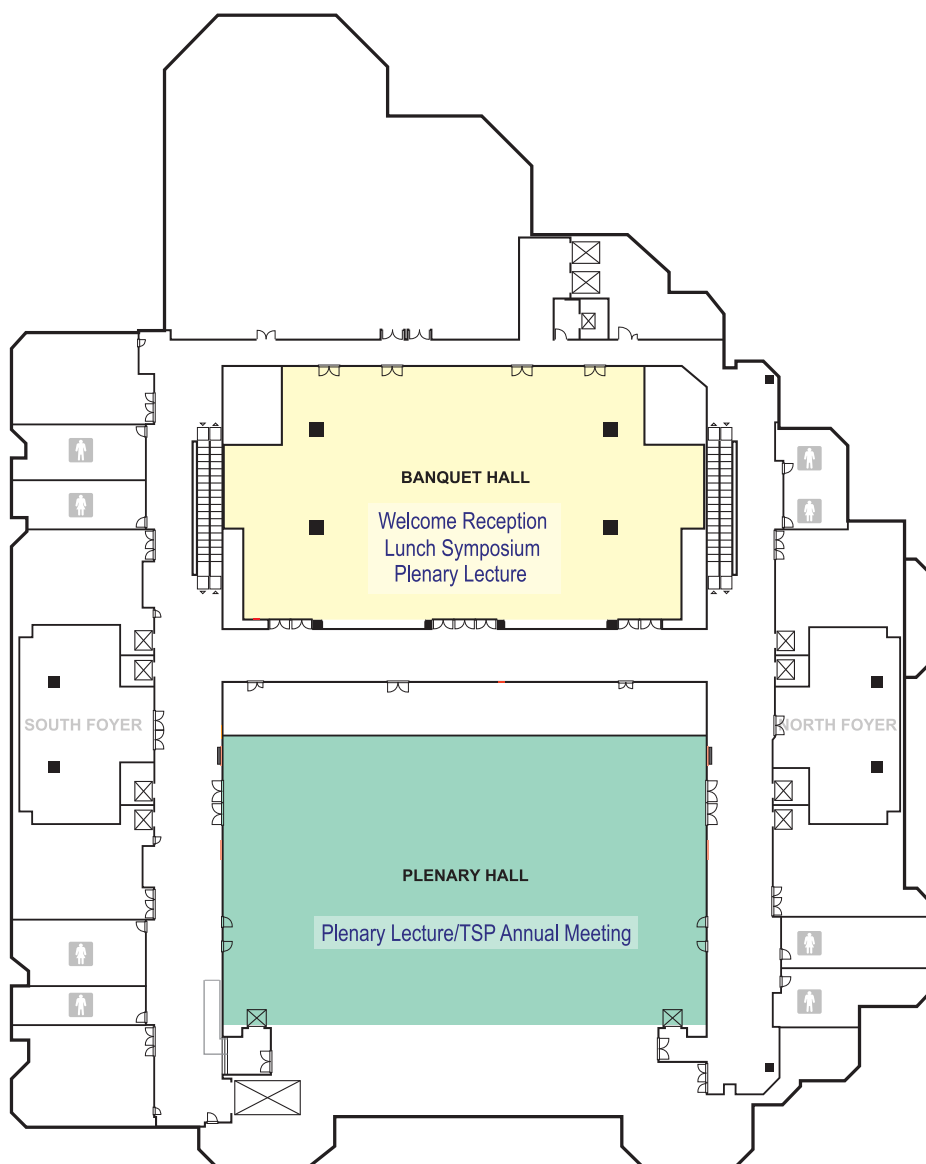


Floor Plan & Exhibition

Saturday-Tuesday, May 21-24, 2011

3F

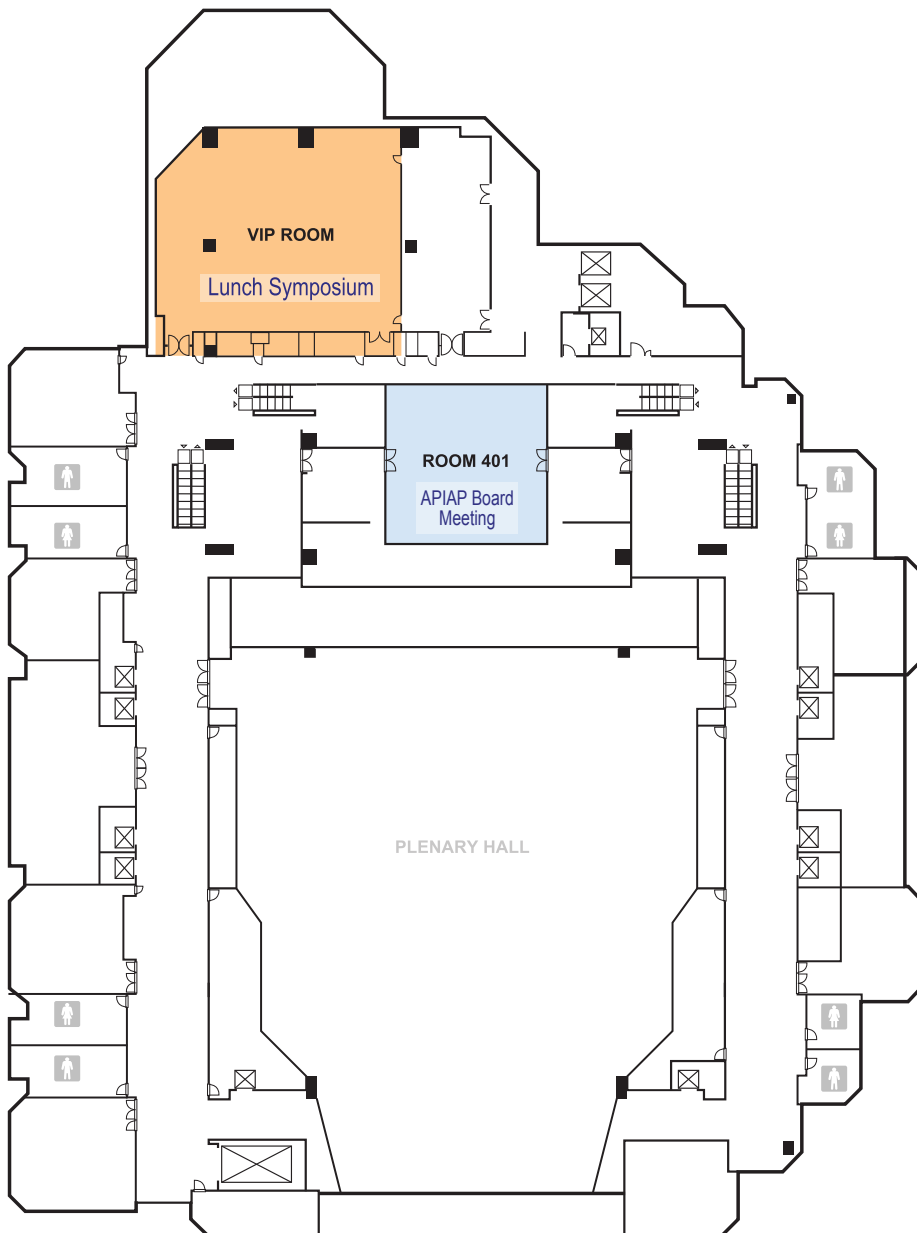
Plenary Lecture/TSP Annual Meeting	Plenary Hall (May 22)
Plenary Lecture	Banquet Hall (May 22-24)
Lunch Symposium	Banquet Hall (May 22-24)
Welcome Reception	Banquet Hall (May 21)



Sunday-Monday, May 22-23, 2011

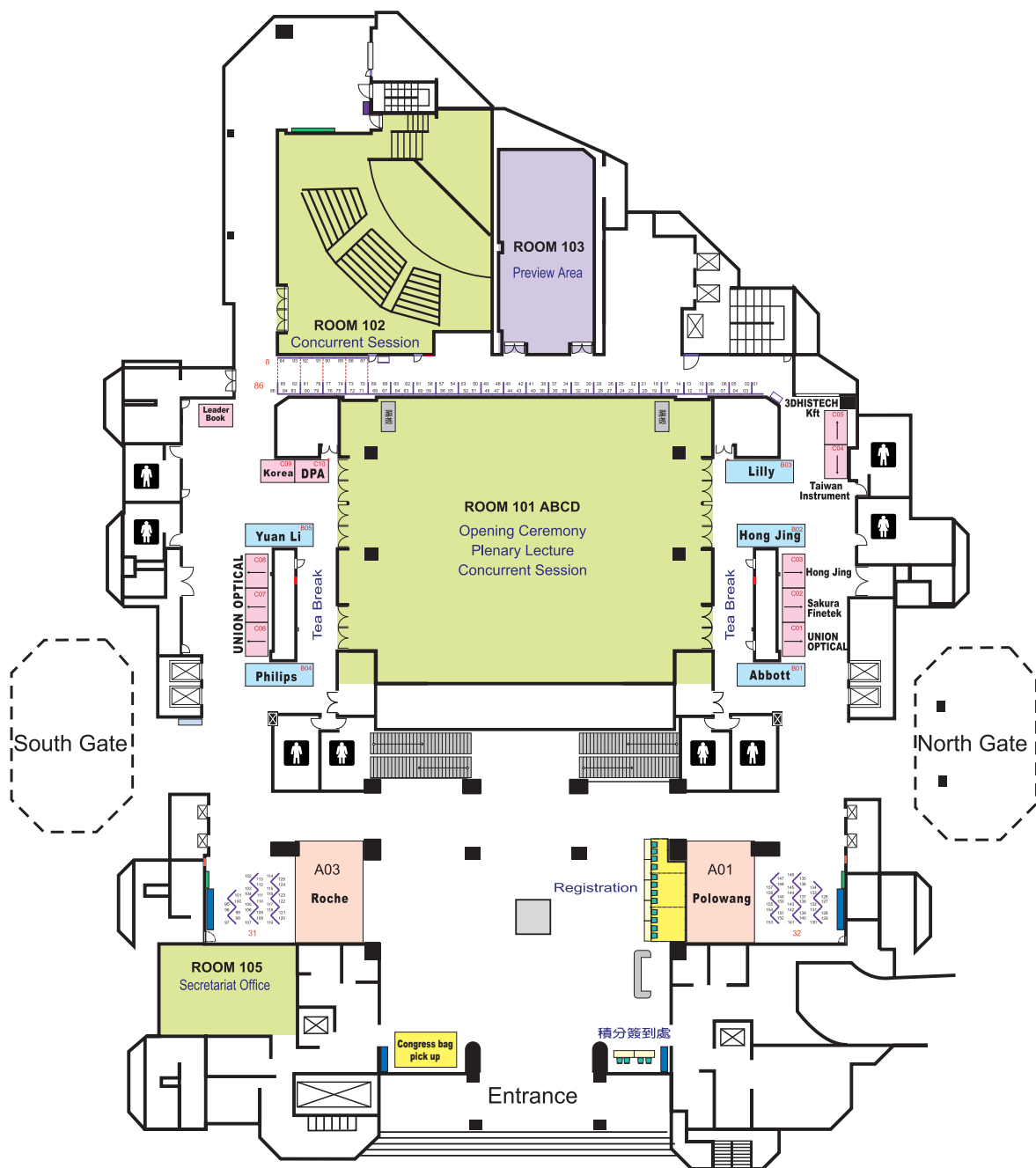
4F

Lunch Symposium	VIP Room (May 22)
APIAP Board Meeting	Rm 401 (May 23)



Floor Plan & Exhibition

1F



General Information

Secretariat

c/o K&A International Co., Ltd.

7F, No. 249, Fuxing S. Rd., Sec. 1, Taipei, Taiwan 10666

Tel: +886-2-2701-8768 Fax: +886-2-2702-2025 Email: apiap2011@knaintl.com.tw

Official Language

English is the official language. No simultaneous interpretation will be offered. Mandarin will be spoken during the Cross-Strait Forum.

Participant Badge

Participant badge can be collected at on-site registration counter during operation hours. It's required to wear the conference badge to access all event grounds and coffee break at all times.

Certificate of Attendance

Your certificate of attendance can be collected while checking in at on-site registration counter during operation hours.

Event Grounds

Venue: Taipei International Convention Center (TICC)

Address: No. 1, Xinyi Rd., Sec. 1, Taipei, Taiwan

Internet Access

Wireless Internet is available throughout the congress period.



Operation Hours and Location

Registration Counter	Friday, May 20, 14:00-17:30 Saturday, May 21, 08:00-17:30 Sunday, May 22, 08:00-17:30 Monday, May 23, 08:00-17:30 Tuesday, May 24, 08:00-17:30	North Side of Lobby
Exhibition	Saturday, May 21, 08:00-17:30 Sunday, May 22, 08:00-17:30 Monday, May 23, 08:00-17:30 Tuesday, May 24, 08:00-17:30	1F, 101 North and South Hallway
Poster Presentation	Saturday, May 21, 08:30-17:30 Sunday, May 22, 08:30-17:30 Monday, May 23, 08:30-17:30 Tuesday, May 24, 08:30-15:30	1F, Hallway of Rm 103
Secretariat	Friday, May 20, 13:00-17:30 Saturday-Tuesday, May 21-24, 08:00-17:30	1F, Rm 105
Preview Room	Friday, May 20, 14:00-18:00 Saturday-Monday, May 21-May 23, 08:00-17:30 Tuesday, May 24, 08:00-16:30	1F, Rm 103 1F, Rm 103 1F, Rm 105

Young Pathologist Travel Award

1. The winners will be announced at the awards ceremony during the gala dinner on Sunday, May 22, at the 3F, Le Grand Ballroom, Le Meriden Taipei. Winners will be informed of their winning status beforehand. All winners will be given a free ticket to the dinner - funding for such has been provided by the award sponsor.
2. All winners should be present to receive the grant / award. Any winner not attending the awards ceremony will be automatically disqualified.
3. The grant and monetary award can be claimed after the award ceremony and before closing of the congress at the on-site secretariat (1F, Rm 105). Claims after the congress will not be accepted.

Instructions for Oral Presentation

Preview Room

Location: 1F, Rm 103

Operation Hours: Friday, May 20, 14:00-18:00

Saturday-Monday, May 21-May 23, 08:00-17:30

Location: 1F, Rm 105

Tuesday, May 24, 08:00-15:00

Presentation Guideline

1. Speakers are requested to strictly observe the allotted presentation time. Since the congress schedule is tight, session chairpersons will strictly enforce the timing. **The staff will ring the bell for time reminding.**
2. It is required to use the laptop prepared by the conference for stable computer system connection. For any reason personal laptop has to be used, please inform the secretariat in advance.
3. The conference will have a laptop set up at the podium for all speakers. A remote control for changing the slides will be prepared; the speaker can control the slides by oneself.
4. All presentation slides should be prepared by "Microsoft Office PowerPoint 2002" or above.
5. Every speaker is required to finish uploading the slides **2 hours** prior to the respective presentation time at the latest. It is suggested to save your final slides both in a CD-R and a USB memory stick and bring them to the preview room.
6. If your slides are prepared by Mac system, the data may deform after its transfer to the Windows system. Please check and correct this possible deformation at the preview room.
7. Video tape presentation is not available. If you need to use video records, please transfer them to the computer in a digital format. The projection does not support Full HD video mode, please avoid this kind of file format. If you prepare to use a Mac laptop, please **bring the Apple DVI to VGA display adapter**. The connector of the projector is D-SUB, be sure the correct adapter is brought.
8. Standard microphone is prepared for all speakers.

Instructions for Discussion

1. Active discussions from the floor are encouraged as far as the time is available.
2. All aspects of discussion session shall be ordered by due consideration of chairpersons.
3. Anyone who wishes to raise a question/discussion can raise hand and wait for an order of chairpersons. To begin your discussion, please identify yourself first.

Instructions for Poster Presentation

Poster Presentation: Saturday-Tuesday, May 21-24, 08:00-17:30

Location: 1F, Hallway of Rm 103 / North and South Side of Lobby

Poster Size: 180 cm (H) * 90 cm (W)

Mounting

- Starts from Saturday, May 21, 08:00
- Necessary office supplies for mounting will be provided on-site. Staple guns are strictly prohibited.
- The top corner space of the poster board will be used to place the poster number, pre-fixed by the secretariat.

Removal

- Starts from Tuesday, May 24, 15:00
- In the event of posters not removed after 16:00, the congress organizer will remove them without further notice.

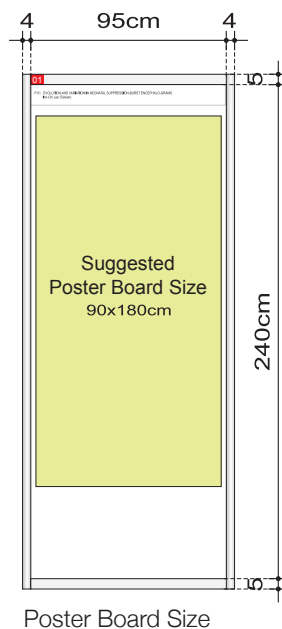
Working Station & Poster Board Size:



Poster Board H: 250cm



Working Station



Poster Board Size

Social Program

Opening Ceremony

Saturday, May 21, 2011, 09:15-09:30

1F, Rm 101, TICC

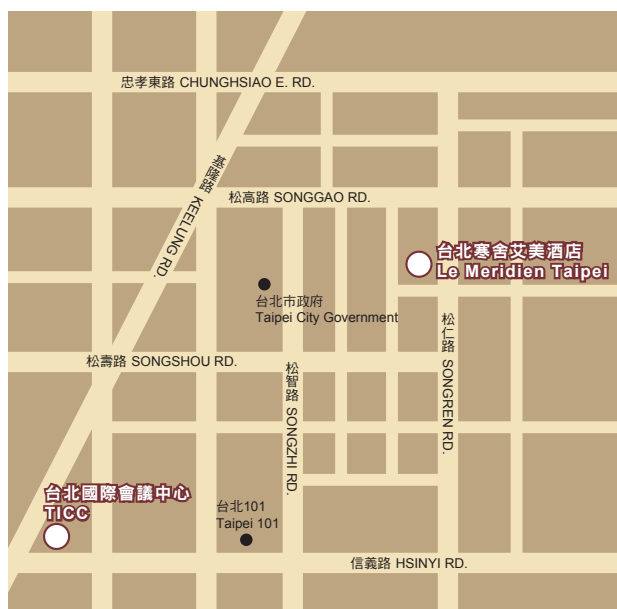
Followed by the Keynote Speech,
09:30-10:30

Welcome Reception

Saturday, May 21, 2011, 18:30-20:30

Venue: 3F, Banquet Hall, Taipei
International Convention
Center (TICC)
No.1 Hsin-Yi Rd., Sec. 5,
Taipei, Taiwan

- Entrance free to all participants and accompany persons, please present your participant badge to enter.



The welcome reception is a perfect occasion for pathologist from all over the world to meet and re-new friendship. The congress had invited well-known Taiwanese artists to demonstrate traditional folk arts and craft, and there will be a chance to bring home the art home with you.

Gala Dinner

Sunday, May 22, 2011, 19:00-21:30

Venue: 3F, Le Grand Ballroom, Le Meridien Taipei
38 Songren Road XinYi District Taipei, Taiwan

Shuttle Bus:

- Limited capacity, gala dinner is only reserved for those who preregistered. Dinner voucher can be collected along with the participant badge and satchel.
- Available to purchase dinner voucher on-site at the registration counter. The fee is at NTD 2,000 /person.

Gala dinner is the highlight of the event with five star cuisine and refreshments sourced locally, distinctly Taiwanese entertainment and theme gives a sense of why Taipei is a city that once experienced, charmed forever. Another highlight is the Young Pathologist Travel Award Ceremony; the winners of Young Pathologist Travel Award will be announced.

Optional Tour

The congress has prepared the following sightseeing tours. If you are interested, please contact the information and tour desk on-site for further details.

For preregistered delegates, please confirm your tours at the information and tour desk on-site.



T1 Taipei City Tour

Pick-up	1330, Saturday May 21 at TICC (Venue)
Duration	3 hours
Tour Stops	Presidential Office (Pass by) —Chiang Kai-Shek Memorial Hall —Martyrs' Shrine—National Palace Museum —Chinese Temple—Handicraft Center
Fare	Bus Tour Fare: NTD 900 Per Person

T2 Taipei Night Tour

Pick-up	1800, Sunday May 22 at TICC (Venue)
Duration	3.5 hours
Tour Stops	Mongolian Bar-B-Q Dinner—Lungshan Temple —Hwahsi Night Market—Taipei 101 Building
Fare	Bus Tour Fare: NTD 1,300 Per Person
● Entrance ticket to Taipei 101 Observatory is NOT included.	





T3 Northern Coast Tour

Pick-up 0830, Monday May 23 at TICC (Venue)
Duration 4 hours
Tour Stops Keelung City—Keelung Harbour
 —Buddha Statue—Yehliu Park
 —Queen's Head
Fare Bus Tour Fare: NTD 1,000 Per Person

T4 Yingko Pottery Tour

Pick-up 1330 Tuesday May 24 at TICC (Venue)
Duration 4 hour
Tour Stops Sanhsia Tsushih & Old street
 —Yingko Pottery Street & Showroom
Fare Bus Tour Fare: NTD 1,100 Per Person



T5 Sun Moon Lake, Puli & Lukang

Pick-up AM 08:00~09:00
 Wednesday May 25 at Hotel Lobby
Duration 2 DAYS & 1 NIGHT
Tour Stops **1st Day:**
 Pick-up from Hotel—Enbus for Nantou
 —Sun Moon Lake
 —Lake Bus Tour (Wenwu Temple
 —Tehua Village—Tse-En Pagoda
 —Holy Monk Shrine)
 —Puli (A Cultural & Artistic Heaven)
 —Taichung City (Overnight at Taichung City)
2nd Day:
 Taichung City
 —Lukang Historical and Cultural Town
 —Entrain or Enbus for Taipei
 —Transfer to Hotel
Fare Tour Fare: NTD 6,000
 (All Included Except Lunch & Dinner)



Acknowledgement

The congress would like to express our sincerest appreciation to the following supporters and sponsors for their generous support.

Taiwan Government Supporters (by alphabetical order)



Bureau of Foreign Trade



Department of Health, Executive Yuan



Department of Health, Taipei City Government



觀光傳播局
Department of Information and Tourism

Department of Information and Tourism, Taipei City Government



National Science Council, Executive Yuan



Ministry of Education



Ministry of Foreign Affairs, Executive Yuan

Participating Societies and Institutions

Chang Gung Memorial Hospital and Chang Gung University

Asia Pacific Divisions of IAP

International Association of Chinese Pathologists

The Breast Cancer Society of Taiwan

Taiwan Society of Cytology

Taiwanese Dermatological Association

The Endocrine Society of the Republic of China


Taiwan Association of Gynecologic Oncologists

Sponsors

CHENG-HSING Medical Foundation

Yin-Fun Educational Foundation


Sponsors (By alphabetical order)


 **Abbott Molecular** 美商亞培公司分子檢驗部

 **Aperio** Aperio (DPA)

 **AstraZeneca**


 **BD** BD Diagnostics

 **3DHISTECH** Kft

 **Eil Lilly and Company**

 **Epitomics, Inc.**


 **Hong Jing Co., Ltd.**


 **LeaderBook** CO.,LTD

 **Leica Microsystems (SEA) Pte Ltd**

 **Merck Serono**

 **Milestone SRL**


 **mtm laboratories AG**

 **Novartis Oncology**


 **Olympus Corporation**

 **Pfizer Taiwan Ltd.**

 **Philips (MedDragon Tech)**

 **Roche Diagnostics Ltd., Taiwan Roche Products Ltd.**

 **Sakura Finetek Japan Co. Ltd**

 **Thermo Fisher Scientific Chang's Scien-Tech Co., Ltd Polowang Co., Ltd**

 **TOPS INSTRUMENT (SHENZHEN) LIMITED**

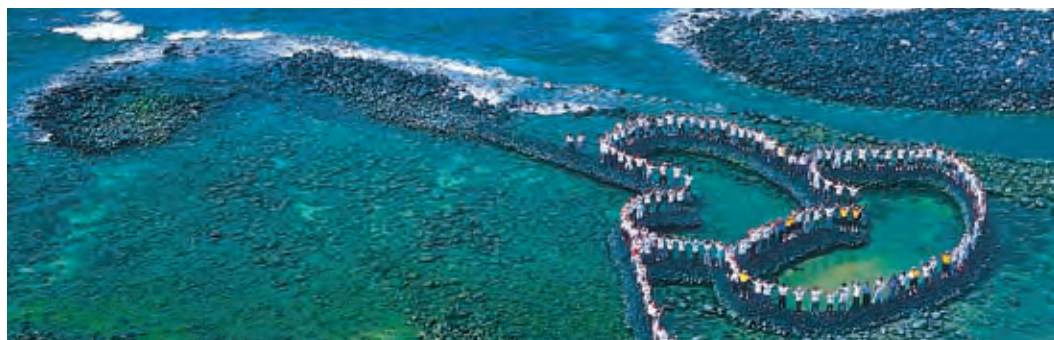
 **UK NEQAS**

 **TICGROUP/METASYSTEMS**

UNION OPTICAL & INSTRUMENTS LTD.

 **Wonderwork Enterprise Co.**

 **YUAN LI INSTRUMENT CO., LTD.**



Opening Ceremony

May 21, 2011 (Saturday)

09:00-09:30 Welcome Address

(1F, Rm101)

Program

May 21, 2011 (Saturday)

(1F, Rm101)

Plenary Session 1

0930:1030 Going Forth to The Past: The Roles of Pathologists in Studying Emerging Infectious Diseases

Wun-Ju Shieh (USA)

Plenary Session 2

10:30-11:30 Pathogenesis and Therapeutic Implication of Virus-Associated Human Cancers

Ih-Jen Su (Taiwan)

Plenary Session 3

(3F, Banquet Hall)

1230-13:30 Molecular Markers in Breast Cancer - Prognostic and Therapeutic Implications

Sunil Lakhani (Australia)



May 22, 2011 (Sunday)

Plenary Session 4

(3F, Plenary Hall)

11:40-12:30 From Molecular Genetics to Biomarkers for Cancer Diagnosis and Treatment.
Malignant Lymphoma as a Model
Elias Campo (Spain)

Plenary Session 5

(3F, Le Grand Ballroom, Le Meridien Taipei)

18:00-19:00 Changes in Disease Patterns in the 20th Century
Robin Cooke (Australia)

19:00-21:30 Gala Dinner (By Gala Dinner Voucher Only)

May 23, 2011 (Monday)

Plenary Session 6

(3F, Banquet Hall)

11:40-12:30 Molecular Genetics in Sarcoma
Marc Ladanyi (USA)

May 24, 2011 (Tuesday)

Plenary Session 7

(3F, Banquet Hall)

11:40-12:30 Medicolegal Issues for Pathologists: General Concepts and Specific Cases Relating
to Genitourinary Pathology
Jonathan Epstein (USA)



Plenary Session 01

Wun-Ju Shieh

Institution: Infectious Disease Pathology Branch (IDPB)

Centers for Disease Control and Prevention, Atlanta, Georgia, USA

Title: Professor

E-mail: wshieh@cdc.gov



Brief Autobiography

Wun-Ju Shieh, MD, MPH, PhD is currently working at the Infectious Disease Pathology Branch, National Center for Emerging and Zoonotic Infectious Diseases, Centers for Disease Control and Prevention (CDC), USA. Dr. Shieh graduated from Taipei Medical University in 1979. After completion of internal medicine residency and infectious disease subspecialty training in 1986, he went to the U.S. to continue his pursuit of professional career. He received a Master of Public Health from Harvard University in 1987 and a Ph.D. in Microbiology & Immunology from Vanderbilt University in 1992. Afterwards, he completed a combined anatomical and clinical pathology residency training at Vanderbilt University Medical Center and an infectious disease pathology fellowship at CDC. He has been working as a medical officer and pathologist at CDC since 1995. He has participated many outbreak investigations, such as 1995 Ebola in Zaire, 1995 leptospirosis in Nicaragua, 1997 Lassa fever in Sierra Leone, 1997 EV71 in Malaysia, 1998 EV71 in Taiwan, 1999 Nipah virus in Malaysia, 2001 anthrax in USA, 2003 SARS in Vietnam and Taiwan, 2003 monkeypox in USA, 2007 Rift Valley fever in Kenya, 2009 pandemic H1N1 influenza in USA, etc. His academic interests include 1) pathology, clinical microbiology, epidemiology, and pathogenesis of infectious diseases; 2) genetic variation and molecular biology of viruses; 3) global public health and geographic medicine; and 4) digital imaging and medical information management.

Examples of his recent publications:

1. Shieh WJ, Blau DM, et al. 2009 Pandemic influenza A (H1N1): pathology and pathogenesis of 100 fatal cases in the U.S. *Am J Pathol.* 2010 Jul; 177(1):166-75.
2. Shieh WJ, Paddock CD, et al. Studies on suspect animal and human cases of Rift Valley fever from an outbreak in Eastern Africa, 2006 – 2007. *Am J Trop Med Hyg.* 2010 Aug; 83(2 Suppl):38-42.
3. Shieh WJ, Li Y, et al: Chapter 89: Monkeypox. *Molecular Detection of Human Viral Pathogens.* 2011, p. 1009-1016. Dongyou Liu, editor. CRC Press. Boca Raton, FL.

Plenary Session 2

Ih-Jen Su

Institution: Distinguished Investigator,
National Health Research Institutes;
Department of Pathology, National Cheng Kung Univ.,
Medical College and Hospital; Tainan, Taiwan

Title: Chair Professor

E-mail: suihjen@nhri.org.tw



Brief Autobiography

Ih-Jen Su, MD.,PhD. is currently the Distinguished Investigator of the Division of Infectious Diseases, National Health Research Institutes (NHRI), Taiwan.. He is also the jointly appointed Chair Professor of the Department of Pathology, National Cheng Kung Univ. (NCKU) Medical College and Hospital. In 2009-2011, he served as the Associate Dean and Deputy Superintendent of the NCKU Hospital. He obtained his MD and PhD degrees from National Taiwan University (NTU) College of Medicine and become the full professor (1991-) and Chairman (2000-2002) of the Department and Institute of Pathology, NTU. In 2003-2004, he served as the Director General of Taiwan Center for Disease Control (CDC) and successfully controlled the SARS outbreak. Dr. Su is a world-renowned expert pathologist in lymphoma/leukemia research and is the member of International Lymphoma Study Group (ILSG), the major group for the WHO classification of malignant lymphoma. His major research interests are on the pathogenesis and therapy of virus-associated human cancers. He is the pioneering investigator and world renowned expert on EBV-associated T and NK/T cell lymphoma and hemophagocytic syndrome. In the past 10 years, he also involved in the control of infections diseases such as influenza, enteroviruses, and tuberculosis in Taiwan and served as the President consultant for SARS and H1N1 influenza control. In recent years, he identified the pre-S mutants in ground glass hepatocytes as the viral oncoproteins in HBV hepatocarcinogenesis and open an entirely new mechanism on HBV hepatocarcinogenesis. Many of his discovery and basic researches have now come to the stages of clinical application and targeted therapy, such as the application of PPAR agonists and resveratrol in the chemoprevention and therapy of virus-associated hemophagocytic syndrome and cancers. He served as the Board members in many foundations, and is currently the associate editor of Cancer Science. He received many prestigious awards for his contribution in researches, SARS control, and society service in the past 30 years.

Plenary Session 3

Sunil Lakhani

Institution: Molecular and Cellular Pathology,
The University of Queensland, School of Medicine, Australia

Title: Professor and Head

E-mail: s.lakhani@uq.edu.au



Brief Autobiography

Sunil Lakhani is State Director, Anatomical Pathology, Pathology Queensland, and Professor and Head of Molecular & Cellular Pathology in The School of Medicine, University of Queensland. He is also Head of the Breast Group at the University of Queensland Centre for Clinical Research (UQCCR) at the Royal Brisbane and Women's Hospital.

Prior to his move to Australia in 2004, he was Professor of Pathology at The Institute of Cancer Research and The Royal Marsden Hospital, London, UK.

His current research interests include lobular carcinoma and its variants, genomic profiles on normal breast epithelial and stem cells, molecular genetics of tumours with a basal phenotype, mechanisms of brain and distant metastases and molecular pathology of familial breast cancers.

He is a series editor for the WHO Tumour Classification Books, volume editor for the Breast Tumour Classification book and deputy editor of Breast Cancer Research.



Plenary Session 4

Elías Campo

Institution: Clinical Director Center for Biomedical Diagnosis Hospital Clinic,
University of Barcelona, Spain

Title: Professor

E-mail: ecampo@clinic.ub.es



Brief Autobiography

Dr Elías Campo received his MD and PhD degrees from the Medical School at the University of Barcelona and conducted a postdoctoral fellowship at the National Cancer Institute in Bethesda, Maryland. He joined the Hospital Clinic where became Chief of the Hematopathology Unit in 1997 and Chief of the Department of Pathology in 2004. He currently acts as the Clinical Director of the Laboratory Division and Full Professor of Anatomic Pathology of the University of Barcelona.

His research is focused on malignant lymphomas and has published more than 350 manuscripts. He is an active member of different international lymphoma study groups including the European Mantle Cell Lymphoma Study group, the Lymphoma Research Foundation Mantle Cell Lymphoma Consortium, the International Lymphoma Study Group and the Leukemia Lymphoma Molecular Lymphoma project. He is the Scientific Director of the Spanish Consortium for the Genome Project of the Chronic Lymphocytic Leukemia in the International Cancer Genome Consortium (ICGC)

Dr Campo is one of the Editors of the 2008-WHO Classification of the hematological neoplasms, Associated Editor of *Haematologica*, and serves as President Elect of the European Association for Haematopathology.



Plenary Session 5

Robin Cooke

Institution: Editor News Bulletin of the IAP and Royal Brisbane Hospital,
Queensland, Australia

Title: Professor

E-mail: cooker@ozemail.com.au



Brief Autobiography

Dr. Cook graduated from the University of Queensland Medical School in Brisbane, Australia, in 1959. Pathology training was in Brisbane and at the Royal Postgraduate Medical School, London, U.K. In 1962 he established the Pathology services in Papua New Guinea, and had the thrill of studying the pathology of these 3 million Stone Age people as they came into contact with Western Medicine for the first time. This study continued in the subsequent 40 years. In 2003 he was awarded an Order of the British Empire by the PNG Government for his contributions to Medicine in Papua New Guinea. For 23 years he was Director of Anatomical Pathology at the Royal Brisbane Hospital, one of the largest teaching hospitals in Australia. While there he built on his New Guinea experience and became an expert in Tropical Diseases. In 2000 he was awarded an OAM (Medal in the Order of Australia) for his contributions to teaching. He is composing and publishing continuing educational material and slide seminars for Medical students, Anatomical Pathologists and Pathology trainees and trainees in other clinical specialties, especially Surgery and Medical Imaging. His first successful publication, co-authored with photographer Brian Stewart was 'A Colour Atlas of Anatomical Pathology' published by Churchill Livingstone. A second major book 'Infectious Diseases – text – atlas - cases' published by McGraw-Hill was released in July 2008. In July 2009 it received a National award from the Australian book publishers as the best scientific book published in 2008 and first prize and a highly commended award in the 2009 British Medical Association book awards. Since 1995 he has been Editor and producer of International Pathology – the News Bulletin of the International Academy of Pathology which currently has a circulation of 23,000 world wide. From January 2009 he retired from clinical duties to concentrate on teaching, and publishing educational material in print and electronic media. He holds teaching appointments at all the medical schools in the state of Queensland - University of Queensland, Bond University, Griffith University, James Cook University, Queensland University of Technology and at a number of Brisbane Teaching Hospitals.

Plenary Session 6

Marc Ladanyi

Institution: Diagnostic Molecular Pathology, Department of Pathology,
Memorial Sloan-Kettering Cancer Center, New York, USA

Title: Professor

E-mail: ladanyim@mskcc.org



Brief Autobiography

Awards

- 1991-92 College of American Pathologists Foundation Scholar
- 1993-96 American Cancer Society Clinical Oncology Career Develop. Award
- 1995 Benjamin Castleman Award of the U.S. - Canadian Academy of Pathology
- 2001 Boyer Award for Clinical Research, MSKCC
- 2005 Young Investigator Award of the U.S.- Canadian Academy of Pathology
- 2007 Nina Axelrod Lectureship, Connective Tissue Oncology Society
- 2009 Caine Halter Hope Now Award from Uniting Against Lung Cancer (Joan's Legacy)

Editorial Boards

Journal of Molecular Diagnostics (Associate Editor, 1999-), Journal of Clinical Pathology (Associate Editor, 2004-2007), Diagnostic Molecular Pathology, Cancer Genetics & Cytogenetics, Journal of Pathology (Associate Editor, 2007-)



Plenary Session 7

Jonathan Epstein

Institution: Departments of Pathology, Urology, & Oncology,
The Reinhard Professor of Urologic Pathology
The Johns Hopkins University School of Medicine, USA

Title: Professor

E-mail: jepstein@jhmi.edu



Brief Autobiography

University

Professor, Departments of Pathology, Urology, & Oncology,
The Reinhard Professor of Urologic Pathology
The Johns Hopkins University School of Medicine

Hospital

Pathologist, Active Staff, Department of Pathology,
The Johns Hopkins Hospital, 3/1990-Current
Director of Surgical Pathology
The Johns Hopkins Hospital, 12/2004-Current

Professional Activities

The United States Canadian Division of the International Academy of Pathology

1997 - 2000 Castleman Award Committee, USCAP

1999 - 2003 Education Committee, USCAP

2005 - 2007 Council

2005 - Current Ambassador

2007 - 2009 Ramzi Cotran Young Investigator Committee

2009 - Current Chair of Development Committee

Chair of Task Force: Creating Multiple Pillars of Financial Support

Dr. Epstein is a member of editorial boards of many prestigious journals, including Modern pathology, American Journal of Surgical pathology, Human Pathology, Archives of Pathology and Laboratory Medicine and Urology. Dr. Epstein published more than 600 articles and he also wrote more than 50 chapters of textbooks.

May 21, 2011 (Saturday)

09:15-09:30 **Opening Ceremony** (1F, Room 101)

Plenary Session PS01 (1F, Room 101)

Moderator: **Ih-Jen Su (Taiwan)**

09:30-10:30 Going forth to the past: the roles of pathologists in studying emerging infectious diseases
Wun-Ju Shieh (USA)

10:30-11:00 **Coffee Break**

Plenary Session PS02 (1F, Room 101)

Moderator: **Shih-Ming Jung (Taiwan)**

11:00-12:00 Pathogenesis and therapeutic implication of virus-associated human cancers
Ih-Jen Su (Taiwan)

12:00-14:00 **Lunch** (3F, Banquet Hall)

Plenary Session PS03 (3F, Banquet Hall)

Moderator: **Jan-Show Chu (Taiwan)**

12:30-13:30 Molecular markers in breast cancer: prognostic and therapeutic implications
Sunil Lakhani (Australia)

Session A01-S01: Education & Ethical Issue (1F, Room 101A)

14:00-17:30

Conveners: **Ho-Keung Ng (Hong Kong), Lewis Hassell (USA), Chee-Yin Chai (Taiwan)**

Symposium: **Pathology Education in the 21st Century**

Symposium I: Professionalism in Pathology

Moderators: **Gandi Li (China), Lewis Hassell (USA)**

14:00-14:30 Professionalism and the practice of pathology-key issues and challenges
A01-S01-01 Li-Chong Chan (Hong Kong)

14:30-15:00 Pathology education across national boundaries
A01-S01-02 Ho-Keung Ng (Hong Kong)

15:00-15:30 Professionalism in pathology
A01-S01-03 Chee-Yin Chai (Taiwan)

15:30-16:00 **Coffee Break**

Symposium II: Digital, Web, and Tele-pathology (1F, Room 101A)

Moderators: **Ho-Keung Ng (Hong Kong), Jeong-Wook Seo (Korea)**

16:00-16:30 Sharing of digitized pathology educational material
A01-S01-04 Kar-Ming Fung (USA)

16:30-17:00 Old challenges and new opportunities created by digital slides in pathology education
A01-S01-05 Lewis Hassell (USA)

17:00-17:30 Integrated pathology information system for multimedia, molecular pathology and virtual microscopy
A01-S01-06 Jeong-Wook Seo (Korea)

18:30-20:30 **Welcome Reception** (3F, Banquet Hall)

Session A02-S03: Endocrine Pathology (1F, Room 101B)

14:00-17:40

Conveners: **Soon Won Hong (Korea), Ryohei Katoh (Japan), Chuen Hsueh (Taiwan), An-Hang Yang (Taiwan)**

Symposium

Moderators: **Ryohei Katoh (Japan), Jen-Der Lin (Taiwan)**

14:00-14:25 Diagnostic problems of encapsulated follicular variant of papillary thyroid carcinomas
A02-S03-01 Ryohei Katoh (Japan)

14:25-14:50 Immunohistochemical characteristics of diffuse sclerosing variant of papillary carcinoma: comparison with conventional papillary carcinoma
A02-S03-02 Soon Won Hong (Korea)

14:50-15:10 Combined genetic and epigenetic tests for papillary thyroid carcinoma in FNA samples
A02-S03-03 Bin Yang (USA)

15:10-15:30 The influence of neural cell adhesion molecule on the metastatic potential of thyroid carcinoma
A02-S03-04 An-Hang Yang (Taiwan)

15:30-16:00 **Coffee Break**

Symposium

Moderators: **An-Hang Yang (Taiwan), Soon Won Hong (Korea)** (1F, Room 101B)

16:00-16:25 Protocols for reporting endocrine cancers
A02-S03-05 Alfred Lam (Australia)

16:25-16:50 Paragangliomas of the Head and Neck
A02-S03-06 Beverly Wang (USA)

16:50-17:15 Adrenal schwannoma with unusual histologic pattern and uptake of immunoglobulins
A02-S03-07 Chuen Hsueh (Taiwan)

17:15-17:40 Gastric neuroendocrine tumors: morphologic and molecular perspectives
A02-S03-08 Yun Wu (USA)

18:30-20:30 **Welcome Reception** (3F, Banquet Hall)

Session A03-S04: Pancreatic Pathology (1F, Room 101C)

14:00-17:30

Convenors: **Toshio Morohoshi (Japan), Matthew M. Yeh (USA), Giuseppe Zamboni (Italy), Günter Klöppel (Germany)**

Symposium

Moderators: **Toshio Morohoshi (Japan), Tsann-Long Hwang (Taiwan)**

14:00-14:20 Cytology of pancreatic tumors
A03-S04-01 Helen Wang (USA)

14:20-14:45 Mucinous cystic neoplasm of pancreas
A03-S04-02 Kee-Taek Jang (Korea)

14:45-15:10 Pancreatic pathology: pancreatic neuroendocrine neoplasms
A03-S04-03 Giuseppe Zamboni (Italy)

15:10-15:30 Pancreatic ductal adenocarcinoma and other uncommon types of carcinomas
A03-S04-04 Dengfeng Cao (USA)

15:30-16:00 **Coffee Break**

Symposium

Moderators: **Giuseppe Zamboni (Italy), Günter Klöppel (Germany)** (1F, Room 101C)

16:00-16:30 Pancreatic endocrine tumors
A03-S04-05 Günter Klöppel (Germany)

16:30-17:00 Mixed exocrine-endocrine carcinoma of the pancreas
A03-S04-06 Nobuyuki Ohike (Japan)

17:00-17:30 Autoimmune pancreatitis: role of pathologists for making the diagnosis
A03-S04-07 Kenji Notohara (Japan)

18:30-20:30 **Welcome Reception** (3F, Banquet Hall)

Session A04-S05: Pediatric Pathology (1F, Room 101D)

14:00-17:30

Convenors: **Yukichi Tanaka (Japan), Serena Bagnasco (USA), Chuen Hsueh (Taiwan)**

Symposium: **Recent advances in Pediatric Pathology**

Moderators: **Serena Bagnasco (USA), Chuen Hsueh (Taiwan)**

14:00-14:30 Update of renal tumors in children
A04-S05-01 Pauline Chou (USA)

14:30-14:50 Umbilical cord ulcer: Is association with congenital upper intestinal atresia so rare? Japanese case series and review of the literature
A04-S05-02 Makiko Ohyama (Japan)

14:50-15:10 Immunohistochemistry in pediatric tumor pathology: a practical approach
A04-S05-03 Joseph Khoury (USA)

15:10-15:30 The immunohistochemical diagnostic panel of pediatric intestinal pseudo-obstruction
A04-S05-04 Sung-Hye Park (Korea)

15:30-16:00 **Coffee Break**

Symposium:

Moderators: **Yukichi Tanaka (Japan), Pauline Chou (USA)** (1F, Room 101D)

16:00-16:30 1) Immune-complex mediated, IgA co-dominant glomerulonephritis, probably post-infectious
A04-S05-05 2) Granulomatous interstitial nephritis as initial presentation of Crohn's disease
Serena Bagnasco (USA)

16:30-16:45 A04-S05-06	A child with adrenocortical carcinoma Ka-Fai To (Hong Kong)
16:45-17:00 A04-S05-07	Pediatric lung carcinoma displaying characteristic clinicopathological and molecular features Yukichi Tanaka (Japan)
17:00-17:15 A04-S05-08	Rare cases of pediatric lymphomas Bo-Yee Ngan (Canada)
17:15-17:30 A04-S05-09	A case of female severe Alport syndrome Kentaro Matsuoka (Japan)

18:30-20:30	Welcome Reception	(3F, Banquet Hall)
-------------	--------------------------	--------------------

Session A05-S02: Dermatopathology	(1F, Room 102)
14:00-17:24	

Convenors: Richard Scolyer (Australia), Thomas Brenn (UK), J. Yu-Yun Lee (Taiwan)

Mini-Symposium

Moderators: Richard Scolyer (Australia), Tseng-tong Kuo (Taiwan), Kong-Bing Tan (Singapore)

14:00-14:30 A05-S02-01	The role of molecular pathology in the diagnosis, classification and treatment of melanocytic tumours Richard Scolyer (Australia)
14:30-15:00 A05-S02-02	Update on cutaneous soft tissue tumours with emphasis on emerging concepts and new entities Thomas Brenn (UK)
15:00-15:30 A05-S02-03	Cutaneous manifestations of adult-onset Still disease J. Yu-Yun Lee (Taiwan)

15:30-16:00	Coffee Break
-------------	---------------------

Slide Seminar

Moderators: Michio Shimizu (Japan), Han-Nan Liu (Taiwan)	(1F, Room 102)
---	----------------

16:00-16:12 A05-S02-04	HHV-8/KSHV-associated lymphoma mimicking cutaneous T-cell anaplastic large cell lymphoma in a HIV-positive patient Cheng-Hsiang Hsiao (Taiwan)
---------------------------	---

- 16:12-16:24 Secondary syphilis clinically and histopathologically mimicking lymphomatoid
A05-S02-05 papulosis
Han-Nan Liu (Taiwan)
- 16:24-16:36 True eccrine adenoma
A05-S02-06 Miki Izumi (Japan)
- 16:36-16:48 Neutrophilic figurate erythema
A05-S02-07 Yu-Hung Wu (Taiwan)

Slide Seminar

Moderators: **Cheng-Hsiang Hsiao (Taiwan), Yu-Hung Wu (Taiwan)**

- 16:48-17:00 Angioedema with eosinophilia
A05-S02-08 Eiichi Arai (Japan)
- 17:00-17:12 Meningococcal infection-related purpura fulminans with subsequent
A05-S02-09 development of panniculitis
Kong-Bing Tan (Singapore)
- 17:12-17:24 Secondary syphilis-associated erythema multiforme in a HIV-positive man
A05-S02-10 Chao-Kai Hsu (Taiwan)

18:30-20:30 **Welcome Reception** (3F, Banquet Hall)



May 22, 2011 (Sunday)

Session A06-S08: Hematopathology

(1F, Rm 101A)

08:30-17:00

Convenors: Koichi Ohshima (Japan), Young Hye Ko (Korea), Gandi Li (China), Shih-Sung Chuang (Taiwan)

Symposium: T and NK/T-cell lymphoma

Moderators: Elias Campo (Spain), Chao-Jung Tsao (Taiwan)

8:30-8:50 T-cell and NK/T cell lymphoma in Taiwan
A06-S08-01 Shih-Sung Chuang (Taiwan)

8:50-9:15 EBV-positive lymphoproliferative disorders
A06-S08-02 Young Hye Ko (Korea)

9:15-9:40 EBV-positive diffuse large B-cell lymphoma and EBV-positive classical
A06-S08-03 Hodgkin lymphoma in Japan
Shigeo Nakamura (Japan)

9:40-10:00 Natural killer cell malignancies: diagnosis and treatment
A06-S08-04 Yok-Lam Kwong (Hong Kong)

10:00-10:30 **Coffee Break**

Symposium: T and NK/T-cell lymphoma

Moderators: Pongsak Wannakrairot (Thailand), Shih-Sung Chuang (Taiwan)

10:30-10:45 EBV-associated T/NK lymphoproliferative disorder in children:
A06-S08-05 the Singapore experience
Siok-Bian Ng (Singapore)

10:45-11:00 Nasal type extranodal NK/T-cell lymphoma of the testis
A06-S08-06 Sanya Sukpanichnant (Thailand)

11:00-11:15 Follicular helper T-cell lymphoma: a rare Chinese case report
A06-S08-07 Gandi Li (China)

11:15-11:30 Lymphoma category in Shanxi according to WHO classification
A06-S08-08 Jinfen Wang (China)

Plenary Session PS04

(3F, Plenary Hall)

Moderator: Shih-Sung Chuang (Taiwan)

11:40-12:30 From molecular genetics to biomarkers for cancer diagnosis and treatment:
malignant lymphoma as a model
Elias Campo (Spain)

Taiwan Society of Pathology Annual Business Meeting

(3F, Plenary Hall)

12:30-14:00

Lunch Symposium

12:30-14:00

LS01 (Program to be announced) (2F, International
Abbott Laboratories Molecular Division Lounge)

LS02 (Program to be announced) (3F, Banquet Hall)
Polowang Co., Ltd

LS03 (Program to be announced) (4F, VIP Room)
BD Diagnostics

Symposium: B-cell lymphoma

Moderators: Koichi Ohshima (Japan), Shahid Pervez (Pakistan) (1F, Rm 101A)

14:00-14:25 Molecular pathogenesis of follicular lymphoma
A06-S08-09 Bharat Nathwani (USA)

14:25-14:50 Diffuse large B-cell lymphoma
A06-S08-10 Shahid Pervez (Pakistan)

14:50-15:10 Update in myeloma
A06-S08-11 Chung-Che Chang (USA)

15:10-15:30 Diagnostic approach for B-cell lymphoma
A06-S08-12 Elias Campo (Spain)

15:30-16:00 **Coffee Break**

Slide Seminar

Moderators: Bharat Nathwani (USA), Tseng-tong Kuo (Taiwan) (1F, Rm 101A)

16:00-16:20 How to reliably demonstrate light chain immunoglobulin restriction in
A06-S08-13 routinely processed sections?
Keith Miller (U.K.)

16:20-16:40 Duodenal lymphoma is distinct
A06-S08-14 Tadashi Yoshino (Japan)

16:40-17:00 Large B-cell lymphoma initially presenting in bone marrow, liver and spleen
A06-S08-15 Kung-Chao Chang (Taiwan)

Plenary Session PS05 & Gala Dinner (by invitation only) (3F, Le Grand Ballroom, Le Meridien)

Moderator: Shih-Ming Jung (Taiwan)

18:00-19:00 Changes in disease patterns in the 20th Century
Robin Cooke (Australia)

19:00-21:30 **Gala Dinner**

Session A07-S06: Gynecology Pathology

(1F, Rm 101B)

08:30-17:00

Convenors: Christopher P. Crum (USA), Ming-Chieh Lin (Taiwan),
Ie-Ming Shih (USA), Ayse Ayhan (Japan), In Sun Kim (Korea),
Yoshiki Mikami (Japan)

Symposium: Recent advances in ovarian cancers

Moderators: Yuh-Cheng Yang (Taiwan), Ayse Ayhan (Japan)

8:30-9:10 Emerging paradigms in pelvic serous carcinogenesis
A07-S06-01 Christopher P. Crum (USA)

9:10-9:35 Heterogeneity and distinct features of different histologic types of ovarian
A07-S06-02 cancer: the importance of accurate subtype diagnosis
C. Blake Gilks (Canada)

9:35-10:00 Mucinous tumors in the ovary
A07-S06-03 Anais Malpica (USA)

10:00-10:30 **Coffee Break**

Symposium

Moderators: Cheng-Yang Chou (Taiwan), In Sun Kim (Korea) (1F, Rm 101B)

10:30-10:50 Ovarian cancer genomics beyond TCGA- what we can learn as pathologists
A07-S06-04 Ayse Ayhan (Japan)

10:50-11:10 Recent findings in genetic alternations of ovarian clear cell carcinomas
A07-S06-05 Kuan-Ting Kuo (Taiwan)

11:10-11:30 Endocervical-like (mullerian) mucinous tumors of the ovary;
A07-S06-06 clinicopathologic features and their pathogenesis
Kyu-Rae Kim (Korea)

Plenary Session PS04

(3F, Plenary Hall)

Moderator: Shih-Sung Chuang (Taiwan)

11:40-12:30 From molecular genetics to biomarkers for cancer diagnosis and treatment:
malignant lymphoma as a model
Elias Campo (Spain)

Taiwan Society of Pathology Annual Business Meeting

(3F, Plenary Hall)

12:30-14:00

Lunch Symposium

12:30-14:00

- | | | |
|-------------|---|----------------------------|
| LS01 | (Program to be announced) | (2F, International Lounge) |
| | Abbott Laboratories Molecular Division | |
| LS02 | (Program to be announced) | (3F, Banquet Hall) |
| | Polowang Co., Ltd | |
| LS03 | (Program to be announced) | (4F, VIP Room) |
| | BD Diagnostics | |

Brief Case Presentations

Moderators: Swei Hsueh (Taiwan), Christopher P. Crum (USA) (1F, Rm 101B)

- | | |
|-------------|---|
| 14:00-14:18 | HPV testing in cervical cytology |
| A07-S06-07 | Annie Cheung (Hong Kong) |
| 14:18-14:36 | HPV-unrelated carcinogenesis of endocervical adenocarcinoma |
| A07-S06-08 | Yoshiki Mikami (Japan) |
| 14:36-14:54 | Large cell neuroendocrine carcinoma of the vaginal vault |
| A07-S06-09 | Artit Jinawath (Thailand) |
| 14:54-15:12 | Uterine corpus lesion |
| A07-S06-10 | Yonghee Lee (Korea) |
| 15:12-15:30 | Endometrial carcinogenesis: molecular insight |
| A07-S06-11 | Ayse Ayhan (Japan) |

15:30-16:00 **Coffee Break**

Brief Case Presentations

Moderators: Tao-Yeuan Wang (Taiwan), Kyu-Rae Kim (Korea) (1F, Rm 101B)

- | | |
|-------------|---|
| 16:00-16:20 | Metastatic mucinous carcinoma simulating primary ovarian mucinous tumor |
| A07-S06-12 | Shih-Hung Huang (Taiwan) |

16:20-16:40 A07-S06-13	Ovarian mucinous tumor Yi-Kyeong Chun (Korea)
16:40-17:00 A07-S06-14	An unusual uterine polyp in a young adult patient Eric Huang (USA)

Plenary Session PS05 & Gala Dinner (by invitation only) (3F, Le Grand Ballroom, Le Meridien)

Moderator:	Shih-Ming Jung (Taiwan)
18:00-19:00	Changes in disease patterns in the 20 th Century Robin Cooke (Australia)

19:00-21:30 Gala Dinner

Session A08-S09: Breast Pathology (1F, Room 101C) 08:30-17:00

Convenors: Gary Tse (Hong Kong), Puay Hoon Tan (Singapore),
Jorge Reis Filho (UK), Cheng-Ping Yu (Taiwan), Chih-Yi Hsu (Taiwan)

Symposium: Recent Advances and Update in Breast Cancer

Moderators: Gary Tse (Hong Kong), King-Jen Chang (Taiwan)

08:30-09:15 Update on WHO breast tumor classification-an editorial perspective
A08-S09-01 Sunil Lakhani (Australia)

09:15-10:00 Special histological subtypes of breast cancers-molecular insights
A08-S09-02 Jorge Reis Filho (UK)

10:00-10:30 Coffee Break

Symposium

Moderators: Takuya Moriya (Japan), Shin-Cheh Chen (Taiwan) (1F, Room 101C)

10:30-10:50 Breast cancer in Taiwan
A08-S09-03 Cheng-Ping Yu (Taiwan)

10:50-11:10 Sentinel lymph nodes
A08-S09-04 Huan-Ming Hsu (Taiwan)

11:10-11:30 Roles and Problems of Breast Core Needle Biopsies
A08-S09-05 Gary Tse (Hong Kong)

Plenary Session PS04

(3F, Plenary Hall)

Moderator: Shih-Sung Chuang (Taiwan)

11:40-12:30 From molecular genetics to biomarkers for cancer diagnosis and treatment:
malignant lymphoma as a model
Elias Campo (Spain)

Taiwan Society of Pathology Annual Business Meeting

(3F, Plenary Hall)

12:30-14:00

Lunch Symposium

12:30-14:00

LS01 (Program to be announced) (2F, International
Abbott Laboratories Molecular Division Lounge)

LS02 (Program to be announced) (3F, Banquet Hall)
Polowang Co., Ltd

LS03 (Program to be announced) (4F, VIP Room)
BD Diagnostics

Symposium: Diagnostic Problems in Breast Pathology (1F, Room 101C)

Moderators: Jan-Show Chu (Taiwan), Ming-Feng Hou (Taiwan)

14:00-14:25 LCIS and variants-diagnosis and clinical management
A08-S09-06 Yunn-Yi Chen (USA)

14:25-14:50 Borderline lesions of the breast
A08-S09-07 Takuya Moriya (Japan)

14:50-15:10 Spindle cell lesions of the breast-diagnostic approach
A08-S09-08 Chih-Yi Hsu (Taiwan)

15:10-15:30 Fibroepithelial lesions of the breast-diagnostic approach
A08-S09-09 Puay Hoon Tan (Singapore)

15:30-16:00 **Coffee Break**

Case Discussion

Moderators: Puay Hoon Tan (Singapore), Tse-Jia Liu (Taiwan) (1F, Room 101C)

16:00-16:10 Intraduct papilloma with atypical apocrine differentiation
A08-S09-10 Malee Warnnissorn (Thailand)

16:10-16:20 Centrally necrotizing carcinoma of the breast
A08-S09-11 Wen Tao Yang (China)

16:20-16:30 A08-S09-12	Metaplastic carcinoma Ping Tang (USA)
16:30-16:40 A08-S09-13	Adenoid cystic carcinoma of breast Chi-Wai Philip Lui (Hong Kong)
16:40-16:50 A08-S09-14	Mucinous carcinoma, endocrine type Yun Niu (China)
16:50-17:00	Q&A

Plenary Session PS05 & Gala Dinner (by invitation only) (3F, Le Grand Ballroom, Le Meridien)

Moderator:	Shih-Ming Jung (Taiwan)
18:00-19:00	Changes in disease patterns in the 20 th Century Robin Cooke (Australia)

19:00-21:30 Gala Dinner

Session A09-S10: Lung Pathology (1F, Rm 101D) 08:30-17:00

Convenors: Osamu Matsubara (Japan), Geon Kook Lee (Korea),
Teh-Ying Chou (Taiwan)

Symposium: New concepts in pulmonary neoplasia

Moderators: Osamu Matsubara (Japan) , Belinda Clarke (Australia)

08:30-09:00 Pathology for personalized lung cancer therapy
A09-S10-01 Teh-Ying Chou (Taiwan)

09:00-09:30 Oncogene changes and lung adenocarcinoma
A09-S10-02 Yuichi Ishikawa (Japan)

09:30-10:00 Targeted therapy-related pathologic tests in NSCLC
A09-S10-03 Geon Kook Lee (Korea)

10:00-10:30 Coffee Break

Symposium

Moderators: Teh-Ying Chou (Taiwan), Geon Kook Lee (Korea) (1F, Rm 101D)

10:30-10:50 Unique P53 and epidermal growth factor receptor gene mutation status in
A09-S10-04 pulmonary Lymphoepithelioma-like carcinoma
Yih-Leong Chang (Taiwan)

10:50-11:10 Clinically relevant rare variants of lung adenocarcinomas: micropapillary
A09-S10-05 and signet ring cell carcinoma
Jae Y. Ro (USA)

11:10-11:30 Simian virus 40 expression in malignant mesothelioma tissues in Korea
A09-S10-06 Soon Hee Jung (Korea)

Plenary Session PS04 (3F, Plenary Hall)

Moderator: Shih-Sung Chuang (Taiwan)
11:40-12:30 From molecular genetics to biomarkers for cancer diagnosis and treatment:
malignant lymphoma as a model
Elias Campo (Spain)

Taiwan Society of Pathology Annual Business Meeting (3F, Plenary Hall) 12:30-14:00

Lunch Symposium

12:30-14:00

LS01 (Program to be announced) (2F, International
Abbott Laboratories Molecular Division Lounge)

LS02 (Program to be announced) (3F, Banquet Hall)
Polowang Co., Ltd

LS03 (Program to be announced) (4F, VIP Room)
BD Diagnostics

Symposium: Newly evolving concepts in non-neoplastic pulmonary diseases (1F, Rm 101D)

Moderators: Jae Y. Ro (USA), Takeshi Fujii (Japan)

14:00-14:20 Update of pulmonary vascular disease
A09-S10-07 Osamu Matsubara (Japan)

14:20-14:40 Pathology update of bronchiolar diseases
A09-S10-08 Kun-Young Kwon (Korea)

14:40-15:00 Smoking-related non-neoplastic lung disease
A09-S10-09 Belinda Clarke (Australia)

15:00-15:20 Pneumothorax-related Lung Disease
A09-S10-10 Yukio Nakatani (Japan)

15:20-15:30 Panel Discussion

15:30-16:00 **Coffee Break**

Brief Case Presentations

Moderators: **Kun-Young Kwon (Korea),** (1F, Rm 101D)
Pradeep Vaideeswar (India)

16:00-16:15 A primary lung cancer, NOS??
A09-S10-11 Toyoharu Yokoi (Japan)

16:15-16:30 Pneumoconiosis by indium
A09-S10-12 Fan-Qing Meng (China)

16:30-16:45 Interesting lung lesions, where three cases will be presented
A09-S10-13 Pradeep Vaideeswar (India)

16:45-17:00 Pulmonary dirofilariasis
A09-S10-14 Chih-Wei Wang (Taiwan)

Plenary Session PS05 & Gala Dinner (by invitation only) (3F, Le Grand Ballroom, Le Meridien)

Moderator: **Shih-Ming Jung (Taiwan)**
18:00-19:00 Changes in disease patterns in the 20th Century
Robin Cooke (Australia)

19:00-21:30 **Gala Dinner**

Session A10-S07: Cytopathology (1F, Rm 102) 08:30-17:00

Conveners: **Chiung-Ru Lai (Taiwan), Fernando Schmitt (Portugal), Helen Wang (USA), Andrew Field (Australia), Howard Wu (USA)**

Symposium: **Molecular Applications on Cytology Specimens**

Moderators: **Fernando Schmitt (Portugal), Andrew Field (Australia)**

8:30-9:00 From the cells to the molecules. An overview of molecular applications on cytology
A10-S07-01 Fernando Schmitt (Portugal)

9:00-9:30 Tyrosine kinase receptor testing (Her2 and EGFR) using fine needle aspiration biopsy
A10-S07-02 Andrew Field (Australia)

9:30-10:00 HPV testing. The example on gynecological cytology
A10-S07-03 Annie Cheung (Hong Kong)

10:00-10:30 **Coffee Break**

Symposium: **New Technology and Quality Improvement of Pap Smears** (1F, Rm 102)

Moderators: **Chiung-Ru Lai (Taiwan)**

10:30-11:00 From papanicolaou to new technologies and HPV vaccination
A10-S07-04 Helen Wang (USA)

11:00-11:30 Clia88 in the US: what works and what doesn't? The US experience
A10-S07-05 (including the litigation issues)
Helen Wang (USA)

Plenary Session PS04 (3F, Plenary Hall)

Moderator: **Shih-Sung Chuang (Taiwan)**

11:40-12:30 From molecular genetics to biomarkers for cancer diagnosis and treatment:
malignant lymphoma as a model
Elias Campo (Spain)

Taiwan Society of Pathology Annual Business Meeting (3F, Plenary Hall)

12:30-14:00

Lunch Symposium

12:30-14:00

LS01 (Program to be announced) (2F, International
Abbott Laboratories Molecular Division Lounge)

LS02 (Program to be announced) (3F, Banquet Hall)
Polowang Co., Ltd

LS03 (Program to be announced) (4F, VIP Room)
BD Diagnostics

Symposium: **FNA Cytopathology**

Moderators: **Helen Wang (USA), Tien-Chun Chang (Taiwan)** (1F, Rm 102)

14:00-14:20 Fine needle aspiration of thyroid: TBS reporting system
A10-S07-06 Howard Wu (USA)

14:20-14:40 Fine needle aspiration of thyroid: comparison of conventional and liquid-
A10-S07-07 based preparation
In Sun Kim (Korea)

14:40-15:00 Thyroid FNA and reflex molecular options of value in diagnosis and follow-
A10-S07-08 up
Lewis Hassell (USA)

15:00-15:20 Fine needle aspiration of breast (comparison with core biopsy)
A10-S07-09 Helen Wang (USA)

15:20-15:30 Panel discussion

15:30-16:00 **Coffee Break**

Symposium: FNA Cytopathology

Moderators: Howard Wu (USA), In Sun Kim (Korea) (1F, Rm 102)

16:00-16:20 Fine needle aspiration of hepatocellular carcinoma: update and new
A10-S07-10 challenges
Aileen Wee (Singapore)

16:20-16:40 EUS-FNA and EUS guided tru-cut biopsies in deep seated
A10-S07-11 lymphadenopathy: a highly successful technique in diagnosis of lymphomas
and staging of different malignancies
Darshana Jhala (USA)

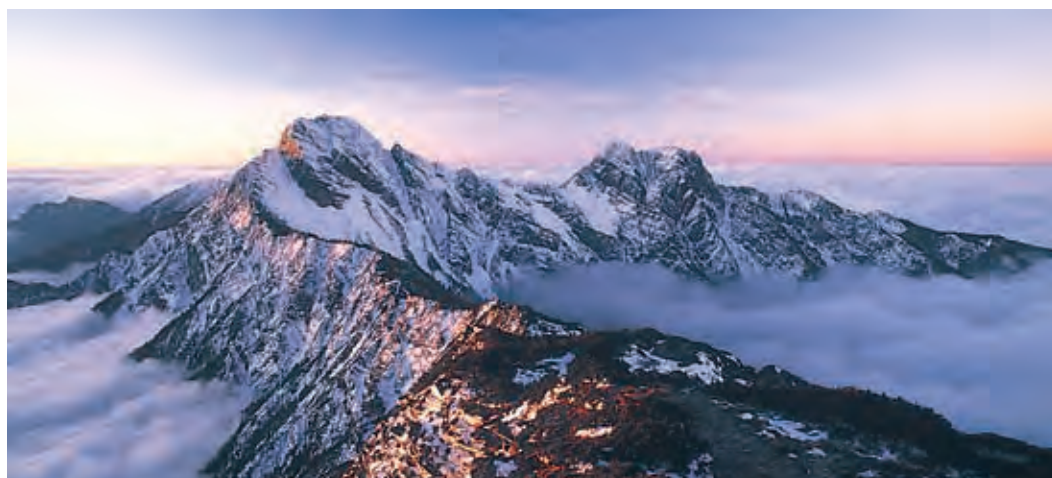
16:40-17:00 Endoscopic ultrasound guided fine needle aspiration of the mediastinum
A10-S07-12 Nirag C Jhala (USA)

Plenary Session PS05 & Gala Dinner (by invitation only) (3F, Le Grand Ballroom, Le Meridien)

Moderator: Shih-Ming Jung (Taiwan)

18:00-19:00 Changes in disease patterns in the 20th Century
Robin Cooke (Australia)

19:00-21:30 **Gala Dinner**



May 23, 2011 (Monday)

Session A11-S12: Liver Pathology 08:30-17:40

(1F, Room 101A)

Convenors: Swan Thung (USA), Yasuni Nakanuma (Japan), Matthew M. Yeh (USA), Kiat Hon Tony Lim (Singapore), Wen-Ming Cong (China), Hock-Liew Eng (Taiwan)

Symposium: Non-neoplastic Liver Disease

Moderators: Robert Eckstein (Australia), Hock-Liew Eng (Taiwan)

08:30-09:15 Chronic biliary disease: PSC and PBC
A11-S12-01 Susan Abraham (USA)

09:15-10:00 Nonalcoholic Steatohepatitis (NASH): An Emerging Epidemic of the East and West
A11-S12-02 Matthew M. Yeh (USA)

10:00-10:30 Coffee Break

Symposium: Non-neoplastic Liver Disease

(1F, Room 101A)

Moderators: Matthew M. Yeh (USA), Susan Abraham (USA)

10:30-11:00 Drug induced cholestatic liver disease
A11-S12-03 Robert Eckstein (Australia)

11:00-11:30 Neonatal cholestatic diseases
A11-S12-04 Yung-Ming Jeng (Taiwan)

Plenary Session PS06

(3F, Banquet Hall)

Moderator: Hsuan-Ying Huang (Taiwan)

11:40-12:30 Molecular genetics in sarcoma
Marc Ladanyi (USA)

Lunch Symposium

12:30-14:00

LS04 External Quality Assurance for IHC and ISH: (2F, International Lounge)
The UK Experience!
Keith Miller (UK)

LS05 (Program to be announced) (4F, VIP Room)
AstraZeneca

Symposium: **Neoplastic liver disease** (1F, Room 101A)

Moderators: **Kiat Hon Tony Lim (Singapore), Swan Thung (USA)**

14:00-14:25 Pathology and Molecular Markers in Early Recurrence and Prognosis of
A11-S12-05 Hepatocellular Carcinoma
Hey-Chi Hsu (Taiwan)

14:25-14:50 Update on Precursor and Early Lesions of HCC
A11-S12-06 Young Nyun Park (Korea)

14:50-15:10 Updates on ground glass hepatocytes: a pre-neoplastic lesion containing HBV
A11-S12-07 pre-s deletion mutants
Ih-Jen Su (Taiwan)

15:10-15:30 Pathological features of 31,000 resected hepatic tumors: a single center
A11-S12-08 experience
Wen-Ming Cong (China)

15:30-16:00 **Coffee Break**

Symposium: **Neoplastic liver disease** (1F, Room 101A)

Moderators: **Wen-Ming Cong (China), Ta-Sen Yeh (Taiwan)**

16:00-16:25 Pathology of Intraductal Papillary Neoplasia of Bile Duct
A11-S12-09 Yasuni Nakanuma (Japan)

16:25-16:50 Clinicopathologic Features of Cholangiocarcinoma: Experience of a Single
A11-S12-10 Center in US
Swan Thung (USA)

16:50-17:15 Classification of Cholangiocarcinoma: A Study of 115 Cases in Taiwan
A11-S12-11 Shiu-Feng Huang (Taiwan)

17:15-17:40 New prognostic factors in hepatocellular carcinoma
A11-S12-12 Kiat Hon Tony Lim (Singapore)

Session A12-S13: Pathology of Infectious Disease 08:30-17:30

(1F, Room 101B)

Convenors: Wun-Ju Shieh (USA), Ka Fai To (Hong Kong), Hideki Hasegawa (Japan), Cheng-Hsiang Hsiao (Taiwan), Chan Kum Park (Korea)

Symposium: Recent Advances in Infectious Disease

Symposium A: Emerging infectious disease in Asia

Moderators: Ka Fai To (Hong Kong), Shang-Chwen Chang (Taiwan)

08:30 -09:00 2009 pandemic influenza: pathology and pathogenesis
A12-S13-01 Wun-Ju Shieh (USA)

09:00 - 09:30 Pathology of influenza H1N1 and SARS in animal model
A12-S13-02 Thijs Kuiken (The Netherlands)

09:30 - 10:00 Pathological analysis of influenza A/H1N1pdm infection in Japan, and
A12-S13-03 development of vaccine for the next generation
Hideki Hasegawa (Japan)

10:00-10:30 **Coffee Break**

Symposium B: Molecular pathology of infection-associated disease (1F, Room 101B)

Moderators: Chan Kum Park (Korea), Jing-Jou Yan (Taiwan)

10:30-11:00 The Roles of Epstein-Barr virus (EBV) micro-RNA in Nasopharyngeal
A12-S13-04 Carcinoma (NPC) Carcinogenesis
Ka Fai To (Hong Kong)

11: 00-11:15 Emerging prevalence of corneal microsporidiosis in southern Taiwan
A12-S13-05 Jing-Jou Yan (Taiwan)

11:15-11:30 Human herpesvirus type 8 in patients with cirrhosis
A12-S13-06 Cheng-Chuan Su (Taiwan)

Plenary Session PS06

(3F, Banquet Hall)

Moderator: Hsuan-Ying Huang (Taiwan)

11:40-12:30 Molecular genetics in sarcoma
Marc Ladanyi (USA)

Lunch Symposium

12:30-14:00

LS04 External Quality Assurance for IHC and ISH: (2F, International Lounge)
The UK Experience!
Keith Miller (UK)

LS05 (Program to be announced) (4F, VIP Room)
AstraZeneca

Symposium C: Histopathology of infectious disease (1F, Room 101B)

Moderators: Hideki Hasegawa (Japan), Cheng-Hsiang Hsiao (Taiwan)

14:00-14:30 Diagnosis of Cutaneous infection in Dermatopathology
A12-S13-07 Chan Kum Park (Korea)

14:30-14:50 Cardiopulmonary manifestation of leptospirosis
A12-S13-08 Pradeep Vaideeswar (India)

14:50-15:10 Non-tuberculous mycobacterial pulmonary infection
A12-S13-09 Jounggho Han (Korea)

15:10-15:30 Organ-transplant-associated Balamuthia mandrillaris infection
A12-S13-10 Wun-Ju Shieh (USA)

15:30-16:00 **Coffee Break**

Brief Case Presentations

(1F, Room 101B)

Moderators: Norain Karim (Malaysia), Wun-Ju Shieh (USA)

16:00-16:15 Yaws, the emergence of an ancient disease
A12-S13-11 Norain Karim (Malaysia)

16:15-16:30 Fascioliasis: a case report in Taiwan
A12-S13-12 Cheng-Hsiang Hsiao (Taiwan)

16:30-16:45 A' MAZE
A12-S13-13 Rosella Montano (Philippines)

16:45-17:00 Penicillium marneffeii
A12-S13-14 Angela Chong (Singapore)

17:00-17:15 Hepatic failure caused by Wangiella Dermatitis infection
A12-S13-15 Hye Sook Min (Korea)

17:15-17:30 Leptospirosis of lung
A12-S13-16 Yung-Hsiang Hsu (Taiwan)

Session A13-S15: Molecular Pathology I **08:30-11:30**

(1F, Room 101C)

Convenors: Yao-Tseng Chen (USA), Tzyy-Choou Wu (USA), Robert Y. Osamura (Japan), Nan-Haw Chow (Taiwan)

Symposium

Moderators: Robert Y. Osamura (Japan), Nan-Haw Chow (Taiwan)

08:30-09:00 Molecular pathology and personalized medicine
A13-S15-01 Tzyy-Choou Wu (USA)

09:00-09:30 Molecular pathology in solid tumors: an overview from DNA to microRNA
A13-S15-02 Yao-Tseng Chen (USA)

09:30-10:00 Micro-RNA profiling of endometrial carcinoma
A13-S15-03 Constance T. Albarracin (USA)

10:00-10:30 Coffee Break

Symposium

Moderators: Yao-Tseng Chen (USA), Tzyy-Choou Wu (USA) (1F, Room 101C)

10:30-11:00 Molecular pathology of neuroendocrine tumors
A13-S15-04 Robert Y. Osamura (Japan)

11:00-11:30 Molecular diagnosis of hematologic Neoplasia. Pitfalls and quality assurance
A13-S15-05 Chung-Liang Ho (Taiwan)

Plenary Session PS06

(3F, Banquet Hall)

Moderator: Hsuan-Ying Huang (Taiwan)

11:40-12:30 Molecular genetics in sarcoma
Marc Ladanyi (USA)

Lunch Symposium

12:30-14:00

LS04	External Quality Assurance for IHC and ISH: The UK Experience! Keith Miller (UK)	(2F, International Lounge)
LS05	(Program to be announced) AstraZeneca	(4F, VIP Room)

Session A14-S16: Quality Assurance

(1F, Room 101C)

14:00- 17:35

Convenors: Toshiaki Manabe (Japan), Angela Chong (Singapore),
Chung-Tai Yue (Taiwan), Chi-Long Chen (Taiwan)

Symposium: Quality Assurance of Anatomic Pathology

Moderators: Toshiaki Manabe (Japan), Chi-Long Chen (Taiwan)

14:00-14:30 Quality assurance program of surgical pathology in Japan
A14-S16-01 Toshiaki Manabe (Japan)

14:30-15:00 Essential considerations for the modelling of quality assurance programmes in
A14-S16-02 anatomical pathology
Richard Williams (Australia)

15:00-15:30 Laboratory lizards
A14-S16-03 Angela Chong (Singapore)

15:30-16:00 **Coffee Break**

Symposium: Accreditation of Anatomic Pathology (1F, Room 101C)

Moderators: Richard Williams (Australia), Chung-Tai Yue (Taiwan)

16:00-16:20 CAP in Taiwan
A14-S16-04 John Wang (Taiwan)

16:20-16:40 ISO15189 for anatomical pathology in Korea
A14-S16-05 Jeong-Wook Seo (Korea)

16:40-17:00 Joint Commision International (JCI) accreditation and re-accreditation-Wan
A14-S16-06 Fang Hospital experiences
Chi-Long Chen (Taiwan)

17:00-17:20 National quality assurance program for cancer diagnosis and treatment-a major
A14-S16-07 contribution of pathologists to the healthcare of Taiwan
Pei-Yi Chu (Taiwan)

17:20-17:30 Panel discussion

Session A15-S14: Head & Neck Pathology **08:30-17:30**

(1F, Room 101D)

Convenors: Takashi Saku(Japan), Toshitaka Nagao (Japan), Hong-Gang Liu (China), Ying-Tai Jin (Taiwan), Chao-Cheng Huang (Taiwan)

Slide Seminar: Salivary Gland Tumors

Moderators: Ying-Tai Jin (Taiwan), Toshitaka Nagao (Japan)

8:30-9:15 Introduction of uncommon salivary gland tumor entities based on WHO
A15-S14-01 classification
Toshitaka Nagao (Japan)

9:15-9:30 Case presentation
A15-S14-02 Takashi Takata (Japan)

9:30-9:45 Case presentation
A15-S14-03 Shin Nieh (Taiwan)

9:45-10:00 Case presentation
A15-S14-04 Shojiroh Morinaga (Japan)

10:00-10:30 Coffee Break

Slide Seminar: Salivary Gland Tumors

(1F, Room 101D)

Moderators: Wael A. Sakr (USA), Amy Chan (Hong Kong)

10:30-10:45 Case presentation
A15-S14-05 Hong-Gang Liu (China)

10:45-11:00 Case presentation
A15-S14-06 Aya Shinozaki (Japan)

11:00-11:15 Case presentation
A15-S14-07 Mitsuyoshi Hirokawa (Japan)

11:15-11:30 Case presentation
A15-S14-08 Mu-Zon Wu (Taiwan)

Plenary Session PS06

(3F, Banquet Hall)

Moderator: Hsuan-Ying Huang (Taiwan)

11:40-12:30 Molecular genetics in sarcoma
Marc Ladanyi (USA)

Lunch Symposium

12:30-14:00

LS04	External Quality Assurance for IHC and ISH: The UK Experience! Keith Miller (UK)	(2F, International Lounge)
-------------	---	-------------------------------

LS05 (Program to be announced) (4F, VIP Room)
AstraZeneca

Symposium: The Pathobiology of Oral Cancers (1F, Room 101D)
Moderators: Chao-Cheng Huang (Taiwan), Takashi Saku (Japan)

14:00-14:30	Oral carcinoma in-situ: an intersection of pathology and cell biology for field cancerization
A15-S14-09	Takashi Saku (Japan)

14:30-15:00	Precursor lesions & predictive markers of oral cancer
A15-S14-10	Shahid Pervez (Pakistan)

15:00-15:30	Oral cancer and HPV
A15-S14-11	Amy Chan (Hong Kong)

15:30-16:00	Coffee Break
-------------	---------------------

Symposium: The Pathobiology of Oral Cancers (1F, Room 101D)
Moderators: Hong-Gang Liu (China), Shahid Pervez (Pakistan)

16:00-16:30	Morphologic, molecular and clinical correlates of early stage oral cancer
A15-S14-12	Wael A. Sakr (USA)

16:30-16:50	The interface between normal and transformed epithelial cells
A15-S14-13	Yasuyuki Fujiita (Japan)

16:50-17:10	The potential biomarkers for areca quid-related oral precancers and cancers in Taiwan
A15-S14-14	Chun-Pin Chiang (Taiwan)

17:10-17:30	Gelectin-1 in Taiwan betel quid-related oral cancer
A15-S14-15	Yuh-Ling Chen (Taiwan)

Session A16-S11: Bone and Soft Tissue Pathology 08:30-17:30

(1F, Room 102)

Convenors: Masanori Hisaoka (Japan), Yong-Koo Park (Korea), Hsuan-Ying Huang (Taiwan)

Slide Seminar

Moderators: Masanori Hisaoka (Japan), Kyung-Rak Sohn (Korea)

- | | |
|-------------|---------------------------------|
| 08:30-08:50 | Soft tissue tumor |
| A16-S11-01 | Yoshinao Oda (Japan) |
| 08:50-09:10 | Soft tissue tumor |
| A16-S11-02 | Chien-Feng Li (Taiwan) |
| 09:10-09:30 | Soft tissue tumor |
| A16-S11-03 | Cher-Wei Liang (Taiwan) |
| 09:30-09:50 | Soft tissue tumor |
| A16-S11-04 | Patrick Pak-Lun Lau (Hong Kong) |
| 09:50-10:00 | Panel Discussion |

10:00-10:30 Coffee Break

Slide Seminar

Moderators: Yoshinao Oda (Japan),
Patrick Pak-Lun Lau (Hong Kong)

(1F, Room 102)

- | | |
|-------------|-------------------------------|
| 10:30-10:50 | Soft tissue tumor |
| A16-S11-05 | Masanori Hisaoka (Japan) |
| 10:50-11:10 | Bone tumor |
| A16-S11-06 | Samreung Rangdaeng (Thailand) |
| 11:10-11:30 | Bone tumor |
| A16-S11-07 | Kyung-Rak Sohn (Korea) |

Plenary Session PS06

(3F, Banquet Hall)

Moderator: Hsuan-Ying Huang (Taiwan)

11:40-12:30	Molecular genetics in sarcoma
	Marc Ladanyi (USA)

Lunch Symposium

12:30-14:00

LS04 **External Quality Assurance for IHC and ISH: The UK Experience!** (2F, International Lounge)
Keith Miller (UK)

LS05 **(Program to be announced)** (4F, VIP Room)
AstraZeneca

Symposium: **Evolution of Bone and Soft Tissue Pathology from Microscopes to Microarrays** (1F, Room 102)

Moderators: **Yong-Koo Park (Korea), Matt van de Rijn (USA)**

14:00-14:30 Diagnosis of pseudobenzign versus pseudomalignant mesenchymal tumors
A16-S11-08 Elizabeth Montgomery (USA)

14:30-15:00 Differential diagnosis of spindle cell neoplasm in nasal cavity
A16-S11-09 Shu-Yi Wang (China)

15:00-15:30 Gastrointestinal mesenchymal tumors to be differentiated from GISTS
A16-S11-10 Hsuan-Ying Huang (Taiwan)

15:30-16:00 Coffee Break

Symposium: **Evolution of Bone and Soft Tissue Pathology from Microscopes to Microarrays** (1F, Room 102)

Moderators: **Hsuan-Ying Huang (Taiwan), Elizabeth Montgomery (USA)**

16:00-16:30 Prognostic biomarkers of leiomyosarcoma
A16-S11-11 Matt van de Rijn (USA)

16:30-17:00 Molecular characterization of osteosarcomas: low-grade versus high-grade lesions
A16-S11-12 Yong-Koo Park (Korea)

17:00-17:30 Application of genomic technologies to bone and soft tissue sarcomas
A16-S11-13 Marc Ladanyi (USA)

May 24, 2011 (Tuesday)

Session A17-S17: Neuropathology 08:30-17:20

(1F, Room 101A)

Convenors: Ho-Keung Ng (Hong Kong), Gerard Jansen (Canada), Joe Ma (USA), Takanori Hirose (Japan), Ming-Tak Ho (Taiwan), Chin-Cheng Lee (Taiwan)

Symposium: CNS Infection and Degeneration

Moderators: Gerard Jansen (Canada), Joe Ma (USA)

8:30-9:00 CNS infection, CJD, West Nile river virus, rabies
A17-S17-01 Wun-Ju Shieh (USA)

9:00-9:30 Creutzfeldt-Jakob disease - the Canadian surveillance perspective
A17-S17-02 Gerard H. Jansen (Canada)

9:30-10:00 Cerebral Phaeohyphomycoses in the Middle East
A17-S17-03 Samir S. Amr (Saudi Arabia)

10:00-10:30 **Coffee Break**

Symposium Neurodegenerative Disorders

(1F, Room 101A)

Moderators: Samir S. Amr (Saudi Arabia), Chin-Cheng Lee (Taiwan)

10:30-10:50 Brain biopsy for neurodegenerative disorders - practical considerations
A17-S17-04 Joe Ma (USA)

10:50-11:10 Amyotrophic lateral sclerosis: a multisystem neuro-glial proteinopathy of
A17-S17-05 TDP-43
Hitoshi Takahashi (Japan)

11:10-11:30 Frontotemporal dementia
A17-S17-06 Pang-Hsien Tu (Taiwan)

Plenary Session PS07

(3F, Banquet Hall)

Moderator: Chin-Chen Pan (Taiwan)

11:40-12:30 Medicolegal issues for pathologists: general concepts and specific cases relating to genitourinary pathology
Jonathan Epstein (USA)

Lunch Symposium

12:30-14:00

LS06 (Program to be announced) (3F, Banquet Hall)
Novartis Oncology

Symposium: Brain Tumors (1F, Room 101A)

Moderators: Ho-Keung Ng (Hong-Kong), Hsin-I Ma (Taiwan)

14:00-14:25 Application of immunohistochemistry to CNS tumors

A17-S17-07 Takanori Hirose (Japan)

14:25-14:50 How should a state pathology service make use of advances in molecular
A17-S17-08 neuro-oncology?

Ho-Keung Ng (Hong-Kong)

14:50-15:10 Updated glioneuronal tumors of the central nervous system

A17-S17-09 Sung-Hye Park (Korea)

15:10-15:30 Pseudotumor and pseudopseudotumor

A17-S17-10 Kar-Ming Fung (USA)

15:30-16:00 **Coffee Break**

Symposium Brain Tumors (1F, Room 101A)

Moderators: Takanori Hirose (Japan), Ming-Tak Ho (Taiwan)

16:00-16:20 Genetics of ependymomas

A17-S17-11 Catherine Godfraind (Belgium)

16:20-16:40 Genomic alterations in glioblastomas from long-term and average survivors

A17-S17-12 Ming-Tak Ho (Taiwan)

16:40-17:00 Analysis of MGMT expression in glioblastoma

A17-S17-13 Shinya Tanaka (Japan)

17:00-17:20 Molecular pathogenesis of medulloblastoma

A17-S17-14 Kin-mang Lau (Hong Kong)

Session A18-S18: Gastrointestinal Pathology

(1F, Room 101B)

08:30-17:30

Convenors: Susan Abraham (USA), Tsung-Teh Wu (USA), Matthew M. Yeh (USA), Chia-Tung Shun (Taiwan)

Symposium: Neoplasms of the Gastrointestinal Tract

Moderators: Yo Kato (Japan), Matthew M. Yeh (USA)

8:30-9:00 Pathology of gastric cancer: an update

A18-S18-01 Yo Kato (Japan)

9:00-9:30 Role of GI pathology study group in cancer screening and registration in Korea

A18-S18-02 Jin Hee Sohn (Korea)

9:30-10:00 Reappraisal of risk stratification and prognostic biomarkers for Gastrointestinal Stromal Tumor (GIST)

A18-S18-03 Hsuan-Ying Huang (Taiwan)

10:00-10:30 **Coffee Break**

Symposium Neoplasms of the Gastrointestinal Tract

(1F, Room 101B)

Moderators: Jin Hee Sohn (Korea), Andrew Field (Australia)

10:30-11:00 Barrett's adenocarcinoma

A18-S18-04 Tsung-Teh Wu (USA)

11:00-11:30 EBV-Associated carcinoma in stomach

A18-S18-05 Chia-Tung Shun (Taiwan)

Plenary Session PS07

(3F, Banquet Hall)

Moderator: Chin-Chen Pan (Taiwan)

11:40-12:30 Medicolegal issues for pathologists: general concepts and specific cases relating to genitourinary pathology
Jonathan Epstein (USA)

Lunch Symposium

12:30-14:00

LS06 (Program to be announced) (3F, Banquet Hall)
Novartis Oncology

Case Seminar: Inflammatory Bowel Disease (1F, Room 101B)

Moderators: Susan Abraham (USA), Matthew M. Yeh (USA)

14:00-14:20 Chronic ischemic colitis

A18-S18-06 Chia-Tung Shun (Taiwan)

14:20-14:40 Ulcerative colitis

A18-S18-07 Wen-Yih Liang (Taiwan)

14:40-15:00 Crohn's disease

A18-S18-08 Tsung-Teh Wu (USA)

15:00-15:20 Chronic persistent infection (TB in particular in Asia) or infection post IBD
treatment

A18-S18-09 Susan Abraham (USA)

15:20-15:30 Panel discussion

15:30-16:00 Coffee Break

Case Seminar: (1F, Room 101B)

Moderators: Tsung-Teh Wu (USA), John Wang (Taiwan)

16:00-16:20 Chronic colitis associated with diverticular disease

A18-S18-10 Susan Abraham (USA)

16:20-16:40 Diaphragm disease

A18-S18-11 Tsung-Teh Wu (USA)

16:40-17:00 Collagenous/lymphocytic colitis with chronic mucosal injury

A18-S18-12 Matthew M. Yeh (USA)

17:00-17:20 Opportunistic infections in AIDS gastrointestinal biopsies

A18-S18-13 Andrew Field (Australia)

17:20-17:30 Pannel discussion

Session A19-S22: Molecular Pathology II 08:30-11:30

(1F, Room 101C)

Convenors: Dong-Feng Tan (USA), Shiu-Feng Huang (Taiwan)

Symposium: Update in Molecular Diagnostic Pathology of Major Organ Systems

Moderators: Dong-Feng Tan (USA), Yao-Tseng Chen (USA)

08:30-09:00 Breast cancer molecular profiling: implications for breast cancer patient management
A19-S22-01 Jorge Reis Filho (UK)

09:00-09:30 Differential genome-wide DNA methylation profilings between low grade and high grade ovarian serous carcinoma
A19-S22-02 Bin Yang (USA)

09:30-10:00 Molecular diagnostics in Soft Tissue Pathology
A19-S22-03 Matt van de Rijn (USA)

10:00-10:30 **Coffee Break**

Moderators: Matt van de Rijn (USA), Jorge Reis Filho (UK) (1F, Room 101C)

10:30-11:00 Molecular diagnostics in colorectal cancer
A19-S22-04 Dong-Feng Tan (USA)

11:00-11:30 Molecular biomarkers in non-small cell lung cancers
A19-S22-05 Shiu-Feng Huang (Taiwan)

Session A20-S20: IgG4-related Diseases 08:30-17:00

(1F, Room 101D)

Convenors: Tseng-tong Kuo (Taiwan), Yasuni Nakamura (Japan)

Symposium

Moderator: Tseng-tong Kuo (Taiwan)

08:30-09:00 Introduction: an overview of IgG4-related diseases
A20-S20-01 Yasuni Nakanuma (Japan)

09:00-09:30 Autoimmune pancreatitis
A20-S20-02 Vikram Deshpande (USA)

09:30-10:00 IgG4-related lymphadenopathy
A20-S20-03 Kenji Notohara (Japan)

10:00-10:30 **Coffee Break**

10:30-11:00 Ocular adnexal IgG4-related disease and Kuttner tumor
A20-S20-04 Toshitaka Nagao (Japan)

11:00-11:30 The histopathology of IgG4-related sclerosing nephropathy
A20-S20-05 Yutaka Yamaguchi (Japan)

Plenary Session PS07

(3F, Banquet Hall)

Moderator: Chin-Chen Pan (Taiwan)

11:40-12:30 Medicolegal issues for pathologists: general concepts and specific cases relating to genitourinary pathology
Jonathan Epstein (USA)

Lunch Symposium

12:30-14:00

LS06 (Program to be announced)
Novartis Oncology

(3F, Banquet Hall)

Symposium

Moderator: Yasuni Nakanuma (Japan)

(1F, Room 101D)

14:00-14:30 IgG4-related lung disease
A20-S20-06 Yoh Zen (UK)

14:30-15:00 Histopathological and immunogenetic analysis of inflammatory abdominal aortic aneurysm
A20-S20-07 Noriyuki Sakata (Japan)

15:00-15:30 Pancreato-biliary malignancy and IgG4 reaction
A20-S20-08 Kenichi Harada (Japan)

15:30-16:00 Coffee Break

16:00-16:30 Is sclerosing angiomatoid nodular transformation of the spleen (SANT) an IgG4-related disease?
A20-S20-09 Tseng-tong Kuo (Taiwan)

(1F, Room 101D)

16:30-17:00 Conclusion and panel discussion
Yasuni Nakanuma (Japan)

Session A21-S19: Genitourinopathology 08:30-17:30

(1F, Room 102)

Convenors: John N. Eble (USA), Guido Martignoni (Italy), Liang Cheng (USA), Jae Y. Ro (USA), Chin-Chen Pan (Taiwan), Ming-Tse Sung (Taiwan)

Symposium: Recent Advances in Urological Pathology

Moderators: Liang Cheng (USA), Jae Y. Ro (USA)

8:30-9:00 Recent developments in the pathology of renal neoplasia
A21-S19-01 John N. Eble (USA)

9:00-9:30 PComas: the past, the present and the future
A21-S19-02 Guido Martignoni (Italy)

9:30-10:00 Significance of morphologic features in urothelial carcinoma
A21-S19-03 David J. Grignon (USA)

10:00-10:30 **Coffee Break**

Symposium Recent Advances in Urological Pathology

(1F, Room 102)

Moderators: Ming-Tse Sung (Taiwan), John N. Eble (USA)

10:30-11:00 Germ cell tumors: new insights into its origin and implications for diagnosis,
A21-S19-04 treatment and classification
Liang Cheng (USA)

11:00-11:30 Difficult new differential diagnosis in prostatic pathology
A21-S19-05 Jonathan Epstein (USA)

Plenary Session PS07

(3F, Banquet Hall)

Moderator: Chin-Chen Pan (Taiwan)

11:40-12:30 Medicolegal issues for pathologists: general concepts and specific cases
relating to genitourinary pathology
Jonathan Epstein (USA)

Lunch Symposium

12:30-14:00

LS06 (Program to be announced) (3F, Banquet Hall)
Novartis Oncology

Symposium: Uropathology in Asia (1F, Room 102)

Moderators: Guido Martignoni (Italy), Ai-Ying Chuang (Taiwan)

14:00-14:20 Advances and controversies in the grading of prostate cancer

A21-S19-06 Brett Delahunt (New Zealand)

14:20-14:40 Challenges in Interpretation of prostatic core biopsies

A21-S19-07 Puay-Hoon Tan (Singapore)

14:40-15:00 Atypical glands in prostate needle biopsy

A21-S19-08 Hemamali Samaratunga (Australia)

15:00-15:20 Molecular mechanism of hormonal refractory prostate cancer

A21-S19-09 Nam-Hoon Cho (Korea)

15:20-15:30 Panel discussion

15:30-16:00 Coffee Break

Moderators: David J. Grignon (USA) and Nam-Hoon Cho (Korea)

16:00-16:20 Urothelial carcinoma of upper urinary tract in Taiwan

A21-S19-10 Ming-Tse Sung (Taiwan)

16:20-16:40 Renal cell carcinomas in hemodialysis patients; histopathological characters and prognosis

A21-S19-11 Toyonori Tsuzuki (Japan)

16:40-17:00 Papillary renal cell carcinoma

A21-S19-12 Zhe Wang (China)

17:00-17:20 WHO/ISUP classification and other prognostic factors for urothelial tumor of the urinary bladder

A21-S19-13 Chin-Chen Pan (Taiwan)

Session A22-S21: Forensic Pathology 08:30-17:40

(2F, Room 201DE)

Convenors: Wen-Ju Shieh (USA), Kai-Ping Shaw (Taiwan), Gilbert Lau (Singapore), Kurt B. Nolte (USA), Zhongxue Hua (USA), Beh Philip SL (Hong Kong), Carmen Cerda-Aguilar (Chile), Raquel Fortun (Philippines), Liang Liu (China)

Symposium: Application of Forensic Pathology during the Mass Disaster Management

08:30-08:40 Opening: Chun-I Lee (Taiwan)

Moderator: Kurt B. Nolte (USA), Chih-Hsin Pan (Taiwan)

08:40-09:30 Infectious surveillance system in medical examiner office

A22-S21-01 Wen-Ju Hsieh (Taiwan)

Moderators: Chia-Tung Shun (Taiwan), Kai-Ping Shaw (Taiwan)

09:30-10:00 Experiences of 88 flood disaster management

A22-S21-02 Chun-I Lee (Taiwan)

10:00-10:30 **Coffee Break**

Moderators: Chin-Yen Lin (Taiwan), Gilbert Lau (Singapore) (2F, Room 201DE)

10:30-11:00 Experience of Singapore Airline SQ-006 crash management

A22-S21-03 Kai-Ping Shaw (Taiwan)

Moderators: Philip SL Beh (Hong Kong), Xiao-Jun Yu (China)

11:00-11:30 After the Indian Ocean Tsunami: Singapore's contribution to the international disaster victim identification effort in Thailand

A22-S21-04 Gilbert Lau (Singapore)

11:30-14:00 **Lunch**

Symposium: Understand the Medical Examiner System of Aisa-Pacific Area and Enrich the International Collaboration (2F, Room 201DE)

Moderators: Wen-Ju Shieh (Taiwan), Chih-Hsin Pan (Taiwan)

14:00-14:50 The design of a biosafety level 3 medical examiner facility

A22-S21-05 Kurt B. Nolte (USA)

Moderator: Chia-Tung Shun (Taiwan), Carmen Cerda-Aguilar (Chile)

14:50-15:10 Medicolegal system in USA

A22-S21-06 Zhongxue Hua (USA)

Moderator: Chun-I Lee (Taiwan), Ching-Hwa Chiu (Taiwan)

15:10-15:30 Medicolegal system in Hong Kong

A22-S21-07 Philip SL Beh (Hong Kong)

15:30-16:00 **Coffee Break**

Moderators: Liang Liu (China), Tsung-Li Kuo (Taiwan)

(2F, Room 201DE)

16:00-16:20 Medicolegal system in Singapore

A22-S21-08 Gilbert Lau (Singapore)

Moderators: Philip SL Beh (Hong Kong), Wei-Hua Lee (Taiwan)

16:20-16:40 Medicolegal system in Chile

A22-S21-09 Carmen Cerda-Aguilar (Chile)

Moderators: John Ming Fong (Taiwan), Kai-Ping Shaw (Taiwan)

16:40-17:00 Medicolegal system in Philippines

A22-S21-10 Raquel Fortun (Philippines)

Moderators: Zhongxue Hua (China), Kai-Ping Shaw (Taiwan)

17:00-17:20 Medicolegal system in Mainland China

A22-S21-11 Liang Liu (China)

Moderators: Chun-I Lee (Taiwan), Raquel Fortun (Philippines)

17:20-17:40 Medicolegal system in Taiwan

A22-S21-13 Kai-Ping Shaw (Taiwan)





PP001

MODELS OF INSURANCE DECEPTION IN SURGICAL PATHOLOGY

Mu Zon Wu^{1,2}

¹ Department of Pathology, National Taiwan University Hospital (Taiwan)

² Department and Institute of Forensic Medicine, College of Medicine, National Taiwan University (Taiwan)

PP004

ALVEOLAR RHABDOMYOSARCOMA MIMICKING NASAL NK/T CELL LYMPHOMA WITH BONE MARROW INVOLVEMENT AT INITIAL PRESENTATION

Khin Than Win Ma¹

¹ Department of Pathology and Laboratory Medicine, Koo Foundation Sun Yat-Sen Cancer Center (Taiwan)

PP005

INTRACRANIAL MALIGNANT PERIPHERAL NERVE SHEATH TUMOR: A CASE REPORT

Dyah Fauziah^{1,2,3,4}

¹ Dept.of Pathology, Faculty of Medicine, Airlangga University / Dr Soetomo Hospital (Indonesia)

² Dept. of Neurosurgery, Faculty of Medicine, Airlangga University / Dr Soetomo Hospital (Indonesia)

³ Dept of Radiology, Faculty of Medicine Airlangga University / Dr Soetomo Hospital (Indonesia)

⁴ Dept. of Pathology, Academisch Medisch Centrum (Netherlands)

PP006

PROGESTERONE RECEPTOR IN BENIGN, ATYPICAL AND ANAPLASTIC MENINGIOMA

Dyah Fauziah^{1,2}

¹ Dept. of Pathology. Faculty of Medicine, Airlangga University / Dr Soetomo Hospital (Indonesia)

² Dept. of Patholgy. Faculty of Medicine, Mataram University (Indonesia)

PP007

THE SENSITIVITY AND SPECTRUM OF DIRECT IMMUNOFLOUORESCENCE TEST FOR SKIN BIOPSY

Rom B Lee¹, Kreetharan A², Chang CC², Ambrose D²

¹ Universiti Putra Malaysia (Malaysia)

² Hospital Kuala Lumpur (Malaysia)

PP008

MOLECULAR STUDY FOR PRIMARY CUTANEOUS NON-MYCOTIC T-CELL AND NK/T-CELL LYMPHOPROLIFERATIVE DISORDERS

Shih-Sung Chuang^{1,2}

¹ Chi-Mei Medical Center (Taiwan)

² Taipei Medical University (Taiwan)

PP009

EXPRESSION OF PPAR-GAMMA AND FACTOR XIIIa IN NORMAL SKIN AND IN BENIGN AND MALIGNANT CUTANEOUS TUMOURS.

Thomas Paulraj Thamboo¹, Kong-Bing Tan¹, Leonard Hwan-Cheong Tan²

¹ National University Health System (Singapore)

² Singapore General Hospital (Singapore)

PP010

STUDY ON THE ROLE OF WINGLESS-TYPE MMTV INTEGRATION SITE FAMILY MEMBER 5A IN DEVELOPMENT OF TUMOR PROGRESSION AND AS A TARGET OF MOLECULE THERAPY IN SKIN CANCER

Hsun-Lang Fang¹, Pei-Yi Chu^{2,3,4}, Shu-Hui Lin², Chung-Min Yeh², Ko-Hung Shen², Pei-Ru Wu², Tzu Cheng Su², Kun-Tu Yeh^{2,5,6}

¹ Department of Cosmetology and Health Care, Min-Hwei College of Health Care Management (Taiwan)

² Department of Pathology, Changhua Christian Hospital (Taiwan)

³ Department and Graduate Institute of Veterinary Medicine, National Taiwan University (Taiwan)

⁴ Department of Pathology, St. Martin De Porres Hospital (Taiwan)

⁵ Graduate Institute of Medical Research, college of Medicine, Kaohsiung Medical University (Taiwan)

⁶ School of Medicine, Chung Shan Medical University (Taiwan)

PP011

HYDROA VACCINIFORME IN SOUTHERN TAIWAN: SIGNIFICANT ASSOCIATION OF EPSTEIN-BARR VIRUS INFECTION IN PATHOLOGICALLY-CONFIRMED CASES

Chien-Chin Chen^{1,3,4}, Meng-Chi Wu², Ih-Jen Su^{1,3}, Kung-Chao Chang¹, Julia Yu-Yun Lee²

¹ Department of Pathology, National Cheng Kung University Hospital (Taiwan)

² Department of Dermatology, National Cheng Kung University Hospital (Taiwan)

³ Institute of Clinical Medicine, College of Medicine, National Cheng Kung University (Taiwan)

⁴ Department of Pathology, Tainan Hospital, Department of Health, Executive Yuan (Taiwan)

PP012

OVER EXPRESSION OF TIF1- γ IN PAPILLARY THYROID CARCINOMA

Wei Sun¹, Xiangtian Kong¹, Ruliang Xu¹, Melissa Yee¹, Daniel Roses¹, Eric Y Han¹, Beverly Wang¹

¹ New York University Medical Center (United States)

PP013

PHEOCHROMOCYTOMA CRISIS PRESENTING WITH CATECHOLAMINE CARDIOMYOPATHY AND ACUTE HEPATIC FAILURE

Wei-Chin Chang¹, An-Hang Yang¹

¹ Taipei Veterans General Hospital (Taiwan)

PP014

ANALYSIS OF B-CATENIN AND AXIN1 STATUS OF WNT SIGNALING PATHWAY IN SOLID PSEUDOPAPILLARY NEOPLASMS OF THE PANCREAS IN TAIWAN

Shih-Chiang Huang¹, Kwai-Fong Ng¹, Ta-Sen Yeh², Hao-Cheng Chang², Tse-Ching Chen¹

¹ Department of Pathology, Chang Gung Memorial Hospital (Taiwan)

² Division of General Surgery, Department of Surgery, Chang Gung Memorial Hospital (Taiwan)

PP015

EXPRESSION OF CXCL12/CXCR4 AND ITS ASSOCIATION WITH SPECIAL METASTASIS IN HUMAN PANCREATIC CANCINOMAS

Weixia Zhong¹, Dexian Zhang¹, Weiwei Chen², Jujie Sun¹, Yuhui Li¹, Yongsheng Gao¹, Lanping Sun¹, Sheng Li³

¹ Department of Pathology, Shandong Tumor Hospital (China)

² Jinan Center Hospital (China)

³ Department of Surgery, Shandong Tumor Hospital (China)

PP016

FAT DISTRIBUTION OF THE ADRENAL CORTEX IN ANEMIC FETUSES WITH HYDROPS FETALIS

Mana Taweewisit¹

¹ Chulalongkorn University (Thailand)

PP017

女性生殖道原始神经外胚层肿瘤6例报告

开选 杨¹, 先莹 姚¹, 帆 杨¹, 雷 李¹, 巍 王¹, 炼 徐¹, 平 王², 琪琳 王²

¹ 四川大学华西第二医院病理科 (China)

² 四川大学华西第二医院妇产科 (China)

PP018

子宫血管周上皮样细胞肿瘤：报告两例并文献复习

先莹 姚¹, 开选 杨¹, 巍 王¹, 霄 唐¹

¹ 四川大学华西第二医院病理科 (China)

PP019

A CASE OF LARGE SUBSEROUSAL UTERINE LEIOMYOMA WITH CYSTIC DEGENERATION MIMICKING OVARIAN MALIGNANCY

Chun-Wei Kuo¹, Shien-Tung Pan¹, Tai-Chang Chen¹

¹ Hsin-Chu General Hospital, Department of Health, Executive Yuan, R.O.C. (Taiwan)

PP020

A CLINICOPATHOLOGICAL STUDY OF APPENDICEAL ENDOMETRIOSIS IN A TAIWAN MEDICAL CENTER

Li-Yu Lee¹, Shih-Ming Jung¹, Shir-Hwa Ueng¹

¹ Chang Gung Memorial Hospital (Taiwan)

PP021

THE CHARACTERISTICS OF LMX1A IN OVARIAN CANCER

Hsin-Yi Lee², Tai-Kuang Chao¹, Hung-Cheng Lai¹

¹ Tri-Service General Hospital (Taiwan)

² National Defense Medical Center (Taiwan)

PP022

EXPRESSION OF RSF-1 IN OVARIAN CARCINOMA: CORRELATION WITH P53 AND CYCLIN E STATUS, DISEASE RECURRENCE AND PATIENT SURVIVAL

Tsui-Lien Mao¹, Hsin-Lien Kao¹

¹ National Taiwan University Hospital (Taiwan)

PP023

OVEREXPRESSION OF MYST4 IN OVARIAN HIGH-GRADE SEROUS CARCINOMA IS ASSOCIATED WITH WORSE PROGNOSIS

Tsui-Lien Mao¹, Jim Jinn-Chyuan Sheu², Ie-Ting Lin¹

¹ National Taiwan University Hospital (Taiwan)

² China Medical University Hospital (Taiwan)

PP024

ANALYSIS OF HPV DNA CHIP TEST IN UTERINE CERVIX WITH CORRELATION OF CERVICAL CYTOLOGY

Seo-Hee Rha¹

¹ Dong-A University, College of Medicine, Department of Pathology (Republic of Korea)

PP025

MULLERIAN ADENOSARCOMA WITH SARCOMATOID OVERGROWTH ASSOCIATED WITH TAMOXIFEN THERAPY: A CASE REPORT

Huei Chieh Chuang¹, Shir-Hwa Ueng¹

¹ Linkou Chang Gung memorial hospital (Taiwan)

PP026

THE EXPERIENCE IN APPLICATION OF ENDOSCOPIC ULTRASOUND GUIDED FINE NEEDLE ASPIRATION WITHOUT RAPID ON-SITE EVALUATION IN A NON-MEDICAL CENTER HOSPITAL IN TAIWAN

Shien-Tung Pan^{1,2}, Lian-Fu Lin³

¹ Department of Pathology, Hsin-Chu General Hospital (Taiwan)

² Department of Pathology, Tung's Taichung MetroHarbor Hospital (Taiwan)

³ Department of Gastroenterology, Tung's Taichung MetroHarbor Hospital (Taiwan)

PP027

DIAGNOSTIC UTILITY OF METABOLIC PHENOTYPES IN MALIGNANT PLEURAL EFFUSIONS: EXPRESSION OF GLUT1 AND CAIX BY IMMUNOCYTOCHEMISTRY

Wen-Ying Lee^{1,2}, Nai-Ding Liao¹, Jiunn-Min Shieh³

¹ Department of Cytopathology, Chi Mei Medical Center (Taiwan)

² Departments of Pathology, College of Medicine, Taipei Medical University (Taiwan)

³ Division of Chest Medicine, Department of Internal Medicine, Chi Mei Medical Center (Taiwan)

PP028

CERVICAL SMEAR FINDINGS OF THE PATIENT WITH MALIGNANT MIXED MULLERIAN TUMOR

Yu-Ju Lin¹, Wen-Chih Huang¹

¹ Department of Anatomic Pathology, Far Eastern Memorial Hospital (Taiwan)

PP029

INTRAOPERATIVE IMPRINT CYTOLOGY OF THE PATIENT WITH GASTROINTESTINAL STROMAL TUMOR

Ai-Chen Chen¹, Wen-Chih Huang¹

¹ Department of Anatomic Pathology, Far Eastern Memorial Hospital (Taiwan)

PP030

THYROID ASPIRATES USING THE BETHESDA SYSTEM OF REPORTING THYROID CYTOPATHOLOGY (TBSRTC) IN THE ASSESSMENT OF RISK MALIGNANCY: A COMPARISON WITH CONVENTIONAL SYSTEM OF CYTODIAGNOSIS

Agustina D. Abelardo¹, Mark Angelo C. Ang¹, Anjelane M. Enriquez¹

¹ University of the Philippines College of Medicine- Philippine General Hospital Medical Center (Philippines)

PP031

COMPARISON RESEARCH OF CYTOLOGICAL PARAMETER ABOUT LIQUID-BASED CYTOLOGICAL APPLICATION IN NON-GYNECOLOGICAL AND CLASSIC SMEAR

Xiaozhe Cao¹, Bin Zhou¹, Zhixing Cao¹, Yafeng Xie¹, Minmei Xu¹, Honggui Cai¹, Ye Zhao¹

¹ The Second People's Hospital of Zhuhai (China)

PP032

CLINICOPATHOLOGICAL FEATURES OF EXTRANODAL NK/T CELL LYMPHOMAS, NASAL TYPE WITH RELAPSE: A SINGLE INSTITUTION EXPERIENCE

Chen-Lin Chi¹, Tse-Ching Chen¹, Chi-Fen Tseng¹, Yenlin Huang¹

¹ Chang Gung Memorial Hospital (Taiwan)

PP033

MEDIASTINAL GREY ZONE LYMPHOMA: CLINICOPATHOLOGICAL FEATURES OF 4 CASES

Dingbao Chen¹, Ying Wang¹, Danhua Shen¹

¹ Peking University People's Hospital (China)

PP035

ANAPLASTIC LARGE CELL LYMPHOMA WITH NEUTROPHIL LEUKOCYTOSIS: A CLINICOPATHOLOGICAL ANALYSIS OF FIVE CASES

I-Wei Chang¹, Wan-Ting Huang¹

¹ Departments of Pathology, Chang Gung Memorial Hospital – Kaohsiung Medical Center (Taiwan)

PP036

A PARALLEL COMPARISON OF T-CELL CLONALITY ASSESSMENT BETWEEN AN IN-HOUSE PCR ASSAY AND THE BIOMED-2 ASSAY LEADING TO AN EFFICIENT AND COST-EFFECTIVE STRATEGY

Szu-Yin Kuo¹, Hongxiang Liu³, Yung-Liang Liao¹, Sheng-Tsung Chang¹, Yen-Chuan Hsieh¹, Betty Angela Nuako Bandoh³, Shih-Sung Chuang^{1,2}

¹ Chi-Mei Medical Center (Taiwan)

² Taipei Medical University (Taiwan)

³ Cambridge University (United Kingdom)

PP037

A WELL-DIFFERENTIATED GRANULOCYTIC SARCOMA OF LYMPHO NODES: A CASE REPORT

Baohua Yu^{1,2}, Hongfen Lu^{1,2}, Xiaoqiu Li^{1,2}, Daren Shi^{1,2}

¹ Department of pathology, Fudan University Shanghai Cancer Center (China)

² Department of Oncology, Shanghai Medical College, Fudan University (China)

PP038

IN VIVO ANTI-TUMOR EFFECTS OF LY294002 AGAINST XENOGRAFTED HUMAN DIFFUSE LARGE B-CELL LYMPHOMA IN A MURINE MODEL

Baohua Yu^{1,2}, Hongfen Lu^{1,2}, Tiecheng Zhang^{1,2}, Xiaoyan Zhou^{1,2}, Pengcheng Shi^{1,2}, Yongming Lu^{1,2}, Daren Shi^{1,2}

¹ Department of pathology, Fudan University Shanghai Cancer Center (China)

² Department of Oncology, Shanghai Medical College, Fudan University (China)

PP039

EXPRESSION OF EBV-ENCODED MIR-BHRF1-3 PREDICTS RESPONSES TO IMMUNOCHEMOTHERAPY IN POST-TRANSPLANT LYMPHOPROLIFERATIVE DISORDER

Shan-Chi Yu¹, Chung-Wu Lin¹

¹ National Taiwan University Hospital (Taiwan)

PP040

IGVH CLONAL REARRANGEMENTS AND MOLECULAR CHARACTERISTICS IN CHINESE B-NHL

Jie Mao¹, Guoping Ren², Zhengrong Mao¹, Ren Zhou¹, Mei Jin², Jianqun Yuan², Wei Ding², Jin Zhao²

¹ Department of Pathology and Patho-physiology, Zhejiang University (China)

² Department of Pathology, Zhejiang University (China)

PP041

INCIDENCE OF EPSTEIN-BARR VIRUS IN CHILDHOOD LYMPHOMAS IN SOUTHERN TURKEY

Melek Ergin¹, Emine Bagir¹, Gulfiliz Gonlusen¹

¹ Pathology Dept., Cukurova University. (Turkey)

PP042

A STUDY OF BASAL LIKE PHENOTYPE EXPRESSION IN GRADE 3 TRIPLE-NEGATIVE BREAST CANCERS

Thanikachalam Pasupati¹, Philip Jayasurya¹, Bhanumati Pillay¹

¹ Gribbles Pathology (Malaysia)

PP043

SPINDLE CELL METAPLASTIC CARCINOMA OF THE BREAST: A DIAGNOSIS PITFALL

PP044

雌激素、孕激素及其拮抗剂调节乳腺癌耐药蛋白机制的研究

晓娟 吴¹, 晓芳 张¹, 慧 张¹, 丽 李¹, 鹏 高¹, 庚寅 周¹

¹ 山东大学医学院病理教研室 (China)

PP045

A CASE STUDY OF RAPIDLY GROWING DIFFUSE PSEUDOANGIOMATOUS STROMAL HYPERPLASIA IN A PERIMENOPUSAL WOMAN

Thanikachalam Pasupati¹, Rangamal Ka²

¹ Gribbles Pathology (Malaysia)

² Damai Service Hospital (Malaysia)

PP046

COMPARATIVE STUDIES OF TUMOR CLASSIFICATION SYSTEMS BETWEEN CANINE AND HUMAN MAMMARY GLAND TUMORS

Pei-Yi Chu^{1,2,3}, Hsun-Lang Fang⁴, Albert Taiching Liao², Kun-Tu Yeh^{1,5,6}, Chen-Hsuan Liu²

¹ Department of Pathology, Changhua Christian Hospital (Taiwan)

² Graduate Institute and Department of Veterinary Medicine, National Taiwan University (Taiwan)

³ Department of Pathology, St. Martin De Porres Hospital (Taiwan)

⁴ Department of Cosmetology and Health Care, Min-Hwei College of Health Care Management (Taiwan)

⁵ Graduate Institute of Medical Research, college of Medicine, Kaohsiung Medical University (Taiwan)

⁶ School of Medicine, Chung Shan Medical University (Taiwan)

PP047

COMPARISON BETWEEN FROZEN SECTION AND TOUCH IMPRINT CYTOLOGY FOR SENTINEL LYMPH NODE EXAMINATION ON BREAST CANCER

Jui Lan¹, Kai-Wen Liu¹, Chao-Cheng Huang¹

¹ Department of Pathology, Chang Gung Memorial Hospital-Kaohsiung Medical Center (Taiwan)

PP048

CORRELATION OF EXPRESSION OF KRUPPEL-LIKE FACTOR 4 AND KRUPPEL-LIKE FACTOR 5 WITH THE CLINICAL MANIFESTATIONS OF BREAST CANCER

Chih-Jung Chen^{1,2,3,4}, Sey-En Lin⁵, Yueh-Min Lin⁴, Dar-Ren Chen^{7,8}, Chi-Long Chen^{1,5,6}

¹ Graduate Institute of Clinical Medicine, College of Medicine, Taipei Medical University (Taiwan)

² Institute of Medicine, Chung Shan Medical University (Taiwan)

³ Institute of Medical and Molecular Toxicology, Chung Shan Medical University (Taiwan)

⁴ Department of Surgical Pathology, Changhua Christian Hospital (Taiwan)

⁵ Department of Pathology, College of Medicine, Taipei Medical University (Taiwan)

⁶ Department of Pathology, WanFang Hospital (Taiwan)

⁷ Comprehensive Breast Cancer Center, Department of Surgery, Changhua Christian Hospital (Taiwan)

⁸ School of Medicine, Chung Shan Medical University (Taiwan)

PP049

THE BETULIN DERIVATIVES OF CHINESE HERB EXTRACTS INDUCED BREAST CANCER CELL APOPTOSIS

Chia-Lin Fu¹, Cheng-Ping Yu¹

¹ Department of Pathology, and Graduate Institute of Pathology and Parasitology, Tri-Service General H (Taiwan)

PP050

CYCLIN D1 ISOFORMS EXERT INVERSE EFFECTS IN PROSTATE CANCER CELL STEM-LIKE PROPERTIES BY DIFFERENT MODIFICATION OF SIGNAL TRANSDUCER AND ACTIVATOR OF TRANSCRIPTION 3 STABILITY

Ying Chen¹, Jar-Yi Ho², Cheng-Ping Yu¹

¹ Department of Pathology, and Graduate Institute of Pathology and Parasitology, Tri-Service General H (Taiwan)

² The Graduate Institute of Life Sciences, National Defense Medical Center (Taiwan)

PP051

ER- B EXPRESSIONS IN THE BENIGN AND MALIGNANT LESIONS OF THE BREAST

Hye Kyoung Yoon¹, Hye Jung Jo¹

¹ Dept. of Pathology, Pusan Paik Hospital, Inje University (Republic of Korea)

PP052

EVALUATION OF HERII GENE AMPLIFICATION BY CISH: A PILOT STUDY FROM A COMMUNITY HOSPITAL

Po-Chi Huang¹, Lai-Ching Wong², Jia-Long Wu³, Mao-Syun Chen³, Chuan-Yu Yu³, Shiu-Feng Huang³

¹ Department of Pathology, Taichung Hospital, Executive Yuan Department of Health (Taiwan)

² Department of Surgery, Taichung Hospital, Executive Yuan Department of Health (Taiwan)

³ Division of Molecular and Genomic Medicine, National Health Research Institute (Taiwan)

PP053

PULMONARY CRYPTOCOCCOSIS

Takeshi Fujii¹, Kenichi Ohashi¹

¹ Toranomon Hospital (Japan)

PP054

PRIMARY PULMONARY ANGIOMYOLIPOMA CONCURRENT WITH ADENOCARCINOMA

Yen Lin Chen¹, Teh Ying Chou², Han Shui Hsu³

¹ Department of Pathology, Cardinal Tien Hospital (Taiwan)

² Department of Pathology and Laboratory Medicine, Taipei Veterans General Hospital (Taiwan)

³ Department of Surgery, Taipei Veterans General Hospital (Taiwan)

PP055

EXPRESSION AND CLINICAL SIGNIFICANCE OF PBK/TOPK IN PLEURAL EFFUSIONS DUE TO LUNG ADENOCARCINOMA AND TUBERCULOSIS

Juan-Juan Mei¹, Ni Li¹, Hong Shen¹

¹ Dept. of Pathology, Southern Medical University (China)

PP056

CONCURRENT METASTATIC THYMIC CARCINOMA AND POST-IRRADIATION SARCOMA

Hong-Lin He¹, Tzu-Ju Chen¹, Hung-I Lu², Hsuan-Chih Hsu³, Sung-Ting Chen⁴,
Chao-Cheng Huang¹

¹ Department of Pathology, Chang Gung Memorial Hospital-Kaohsiung Medical Center (Taiwan)

² Department of Thoracic and Cardiovascular Surgery, Chang Gung Memorial Hospital-Kaohsiung (Taiwan)

³ Department of Radiation oncology, Chang Gung Memorial Hospital-Kaohsiung Medical Center (Taiwan)

⁴ Department of Pathology, Yuan's General Hospital (Taiwan)

PP057

**METASTATIC GESTATIONAL CHORIOCARCINOMA MIMICKING LUNG PRIMARY:
A CASE REPORT**

Shiou-Fu Lin¹, Teh-Ying Chou¹

¹ Department of Pathology and Laboratory Medicine, Taipei Veterans General Hospital (Taiwan)

PP058

CLINICOPATHOLOGIC FEATURES OF ALK-REARRANGED LUNG ADENOCARCINOMA

Joon Seon Song¹, Seog-Yun Park¹, Jae Ill Zo², Geon Kook Lee^{1,2}

¹ Departments of Pathology, National Cancer Center (Republic of Korea)

² Center for Lung Cancer, National Cancer Center (Republic of Korea)

PP059

**ASSESSMENT OF HISTOLOGIC SUBTYPE OF LUNG CANCER AND EPIDERMAL
GROWTH FACTOR RECEPTOR MUTATION BY ENDOBRONCHIAL ULTRASOUND-GUIDED
TRANSBRONCHIAL NEEDLE ASPIRATION**

Seog-Yun Park¹, Geon Kook Lee¹, Bo Bin Hwang¹

¹ Korea National Cancer Center (Republic of Korea)

PP061

**DIFFERENTIAL GENE EXPRESSION OF ARTICULAR CHONDROCYTES DURING
DEVELOPMENT IN RAT**

Ya-Yu Yang¹, Heng-Sheng Lee²

¹ Graduate institute of Pathology & Parasitology, National Defense Medical Center (Taiwan)

² Department of Pathology, Tri-Service General Hospital & National Defense Medical Center (Taiwan)

PP062

ANTI-INFLAMMATORY EFFECTS OF (-)-EPIGALLOCATECHIN-3-GALLATE ON THE COCULTURAL CHONDROCYTES AND SYNOVIAL FIBROBLASTS INDUCED BY IL-1BETA

Chien-Yu Wang¹, Heng-Sheng Lee²

¹ Graduate institute of Pathology & Parasitology, National Defense Medical Center (Taiwan)

² Department of Pathology, Tri-Service General Hospital & National Defense Medical Center (Taiwan)

PP063

EFFECTS OF ANTIEPILEPTIC DRUGS ON CHONDROCYTE GROWTH

Shih-Yu Wang¹, Hueng-Chuen Fan², Heng-Sheng Lee¹

¹ Graduate Institute of Pathology and Parasitology, National Defense Medical Center (Taiwan)

² Department of Pediatrics, Tri-Service General Hospital, National Defense Medical Center (Taiwan)

PP064

EFFECTS OF PAMIDRONATE DISODIUM ON BREAST CANCER CELL LINE

Ying-Chun Liu¹, Heng-Sheng Lee¹

¹ Graduate Institute of Pathology and Parasitology, National Defense Medical Center (Taiwan)

PP065

FETAL CARTILAGE TUMORS: CLINICOPATHOLOGICAL EVALUATION OF 16 CASES

Gulfiliz Gonlusen¹, Arbil Avci¹, Melek Ergin¹, Vesile Erguven¹, Seyda Erdogan¹, Cenk Ozkan²

¹ Pathology Dept., Cukurova University (Turkey)

² Orthopedic Surgery, Cukurova University (Turkey)

PP066

FIBRO-C-INDEX – A STANDARDIZED QUANTIFICATION OF LIVER FIBROSIS USING SECOND HARMONIC GENERATION AND TWO-PHOTON MICROSCOPY

Dean Tai^{1,2}, Nancy Tan^{3,4}, Chiang Huen Kang², Chee Leong Cheng⁵, Aileen Wee⁵, Hanry Yu^{1,4}

¹ HistoIndex Pte Ltd (Singapore)

² Institute of Bioengineering and Nanotechnology (Singapore)

³ Department of Pediatrics, KK Women's and Children's Hospital (Singapore)

⁴ Department of Physiology, Yong Loo Lin School of Medicine (Singapore)

⁵ Department of Pathology, National University Hospital (Singapore)

PP068

IMPAIRED STABILITY OF THE CYTOSKELETON BY SIRNA-INDUCED PLECTIN DEFICIENCY IN HUMAN LIVER CELLS

Yi-Hsiang Liu^{1,2}, Chiung-Chi Cheng^{3,4}, Yih-Shyong Lai¹

¹ Department of Pathology, Chang Bing Show Chwan Memorial Hospital (Taiwan)

² Department of Pathology, Tzu Chi University (Taiwan)

³ Department of Medical Research, Chang Bing Show Chwan Memorial Hospital (Taiwan)

⁴ Department of Ecology, Providence University (Taiwan)

PP069

ROLES OF HEPATIC PROGENITOR CELLS ACTIVATION AND DUCTULAR REACTION PROLIFERATION IN MORBID OBESITY

Phui-Ly Liew¹, Weu Wang², Yi-Chih Lee³, Ming-Te Huang⁴, Wei-Jei Lee⁵

¹ Department of Pathology, Taipei Medical University Hospital, Taipei Medical University (Taiwan)

² Department of Surgery, Taipei Medical University Hospital, Taipei Medical University (Taiwan)

³ Department of International Business, Ching-Yun University (Taiwan)

⁴ Department of Surgery, Shuang Ho Hospital, Taipei Medical University (Taiwan)

⁵ Department of Surgery, Min-Sheng General Hospital (Taiwan)

PP070

CLINICOPATHOLOGIC STUDY ON COMBINED HEPATOCELLULAR CARCINOMA AND CHOLANGIOCARCINOMA

Ha Na Choi¹, Jun Sang Bae¹, Urangoo Jamiyandorj¹, Ju Hyung Lee², Hee Chul Yu³,
Ho Sung Park¹, Myoung Ja Chung¹, Woo Sung Moon¹

¹ Department of Pathology, Chonbuk National University, Medical School (Republic of Korea)

² Department of Preventive Medicine, Chonbuk National University, Medical School (Republic of Korea)

³ Department of Surgery, Chonbuk National University, Medical School (Republic of Korea)

PP071

NONCIRRHOTIC PORTAL FIBROSIS: ONE DISEASE WITH MANY NAMES – AN ANALYSIS FROM PATHOLOGIC STUDY OF NATIVE EXPLANT LIVERS WITH END STAGE CHRONIC LIVER DISEASE

Deepali Jain¹, Nabeen C Nayak¹, Sanjiv Saigal¹

¹ Sir Ganga Ram Hospital (India)

PP072

CORRELATION OF INCREASED SPATIAL RANDOMNESS OF NUCLEAR DISTRIBUTION WITH HISTOLOGICAL GRADE IN HEPATOCELLULAR CARCINOMA: DETECTION AND QUANTIFICATION WITH DELAUNAY TRIANGULATION

Jin-Fan Chen¹, Albert Yang^{2,3,4}, Yi-Chen Yeh^{2,5}, Shyh-Chern Chang¹, Norden Huang^{3,4},
Chung-Kang Peng⁶, Jaw-Ching Wu²

¹ Department of Pathology, Tao-Yuan Veterans Hospital (Taiwan)

² Institute of Clinical Medicine, National Yang-Ming University (Taiwan)

³ Center for Dynamical Biomarkers and Translational Medicine, National Central University (Taiwan)

⁴ Research Center for Adaptive Data Analysis, National Central University (Taiwan)

⁵ Department of Pathology, Taipei Veterans General Hospital (Taiwan)

⁶ Margret and H. A. Rey Institute for Nonlinear Dynamics in Medicine, Beth Israel Deaconess Medical Ce (United States)

PP073

THE EXPRESSION OF CYTOSKELETONS IN SYNEMIN KNOCK-DOWN HUMAN LIVER CELLS

Chiong-Chi Cheng¹, Yi-Hsiang Liu², Yih-Shyong Lai²

¹ Department of Medical Research, Chang Bing Show Chwan Memorial Hospital (Taiwan)

² Department of Pathology, Chang Bing Show Chwan Memorial Hospital (Taiwan)

PP074

EXPRESSION OF DLK1 IN HCC AND CORRELATE CHRONIC LIVER DISEASE

Jie Yu¹, Hong-Fa Li¹, Zhong-Yi Qian¹, Li-Juan Shen¹

¹ Department of Pathology, Kunming Medical College (China)

PP075

SCUBE2 SUPPRESSES BREAST TUMOR CELL PROLIFERATION AND CONFERS A FAVORABLE PROGNOSIS IN INVASIVE BREAST CANCER

Chien-Jui Cheng^{1,2}, Yuh-Charn Lin³, Ming-Tzu Tsai³, Chi-Long Chen¹, Ruey-Bing Yang³

¹ Department of Pathology, School of Medicine, College of Medicine, Taipei Medical University (Taiwan)

² Department of Pathology, Taipei Medical University Hospital (Taiwan)

³ Institute of Biomedical Sciences, Academia Sinica (Taiwan)

PP076

FILARIASIS OF PARATESTICULAR SOFT TISSUE, MIMICKING TESTICULAR TUMOR: A CASE REPORT

Kah Wai æNgan¹, Rosna Yunus¹, Malina Osman², Ngah Zasmy Unyah²

¹ Department of Pathology, Serdang Hospital (Malaysia)

² Department of Medical Microbiology and Parasitology, University Putra Malaysia, (Malaysia)

PP077

CRESCENT-FORMING POLYOMA VIRUS NEPHROPATHY IN A RENAL ALLOGRAFT BIOPSY: A RARE MORPHOLOGIC MANIFESTATION AND POTENTIAL DIAGNOSTIC PITFALL

Hwei-Yee Lee^{1,2}, Maaz Abbasi³, Miguel F Palma Diaz¹, Monica Sanchez-Avila¹,

Behzad Najafian¹, Charles E Alpers¹, Elizabeth A Kendrick³, Kelly D Smith¹

¹ Department of Anatomic Pathology, University of Washington Medical Center (United States)

² Department of Pathology, Tan Tock Seng Hospital (Singapore)

³ Department of Medicine, Division of Nephrology, University of Washington (United States)

PP078

DIFFERENTIAL IMMUNE RESPONSE OF LUNG TO A/TAIWAN/2001(H1N1) AND MOUSE ADAPTIVE A/WSN/1933(H1N1) INFLUENZA VIRUS INFECTION IN A MOUSE MODEL

Yi-Hua Chen¹, Chien-Min Hsu², Chien-Yi Pai², Meng-I Lin², Yi-Wen Chen², Chen-Wen Yao^{1,2}, Jong-Shiaw Jin¹

¹ Graduate Institute of Pathology, National Defense Medical Center (Taiwan)

² Chinese Herbs Medicine Research Center, Department of Pathology, Tri-Service General Hospital (Taiwan)

PP079

PATHOLOGICAL STUDY OF SIALOBLASTOMA OF THE INFANT

Mu Zon Wu^{1,2}

¹ Depart of Pathology, National Taiwan University Hospital (Taiwan)

² Department and Institute of Forensic Medicine, College of Medicine, National Taiwan University (Taiwan)

PP080

IMMUNOHISTOCHEMICAL EXPRESSION OF SOX10 IN MUCOSAL OF THE HEAD AND NECK

Honggang Liu¹, Qian Yao¹, Shuyi Wang², Max X. Kong³, Hao Ho³, Wei Sun³, Beverly Wang³

¹ Tong Ren Hospital, Capital University (China)

² Eye, Ear and Throat Hospital, Fu Dan University (China)

³ New York University School of Medicine (United States)

PP081

THE ROLE OF IGFBP-6 GENE IN THE PATHOGENESIS OF NASOPHARYNGEAL CARCINOMA (NPC)

Yuan-Sung Kuo¹, Han-Chung Wu¹, Chin-Tarng Lin¹

¹ National Taiwan University (Taiwan)

PP082

THE FEATURES OF PATHOLOGY IN ORBITAL MALIGNANT TUMORS IN CHILDREN

Yan Hei¹, Li Kang¹, Yue-yue Li¹, Wei Wang¹, Li-hua Xiao¹

¹ Institute of Orbital Disease, Armed Police General Hospital (China)

PP083

LOSS OF NUCLEAR EXPRESSION OF KRÜPPEL-LIKE FACTOR 4 ASSOCIATED WITH POOR PROGNOSIS IN ORAL CANCER PATIENTS

Chih-Jung Chen^{1,2,3}, Li-Sung Hsu⁴, Huei Lee^{1,2}, Jeng-Dong Hsu^{5,7}, Mu-Kuan Chen^{6,7}, Kun-Tu Yeh^{3,7,8}

¹ Institute of Medicine, Chung Shan Medical University (Taiwan)

² Institute of Medical and Molecular Toxicology, Chung Shan Medical University (Taiwan)

³ Department of Surgical Pathology, Changhua Christian Hospital (Taiwan)

⁴ Institute of Biotechnomistry and Biotechnology, College of Medicine, Chung Shan Medical University (Taiwan)

⁵ Department of Pathology, Chung Shan Medical University Hospital (Taiwan)

⁶ Department of Otorhinolaryngology, Head and Neck Surgery, Changhua Christian Hospital (Taiwan)

⁷ School of Medicine, Chung Shan Medical University (Taiwan)

⁸ Institute of Clinical Medicine, Kaohsiung Medical University (Taiwan)

PP084

STUDY ON THE CORRELATION BETWEEN LEVELS OF DIACYLGLYCEROL KINASE AND PROTEIN KINASE C AND CLINICAL STATUS IN ORAL CANCER PATIENTS

Pei-Yi Chu^{1,2,3}, Hsun-Lang Fang⁴, Hui-Chun Tai¹, Chung-Min Yeh¹, Shu-Hui Lin¹, Ya-Sian Chang⁵, Jan-Gowth Chang⁵, Kun-Tu Yeh^{5,6}

¹ Department of Pathology, Changhua Christian Hospital (Taiwan)

² Department and Graduate Institute of Veterinary Medicine, National Taiwan University (Taiwan)

³ Department of Pathology, St. Martin De Porres Hospital (Taiwan)

⁴ Department of Cosmetology and Health Care, Min-Hwei College of Health Care Management (Taiwan)

⁵ Graduate Institute of Medical Research, college of Medicine, Kaohsiung Medical University (Taiwan)

⁶ School of Medicine, Chung Shan Medical University (Taiwan)

PP085

WHITE SPONGE NEVUS: A CASE REPORT AND REVIEW OF THE LITERATURE

Aroonwan Lam-ubol¹, P Vacharotayangul¹, S Rungsiyanont¹, K Sappayatosok¹

¹ Department of Oral Surgery and Oral Medicine, Faculty of Dentistry, Srinakharinwirot University (Thailand)

PP086

EXPRESSION OF EPS8 CORRELATES WITH POOR SURVIVAL IN ORAL SQUAMOUS CELL CARCINOMA

Pei-Yi Chu^{1,2,3}, Jia-Hung Liou¹, Yueh-Min Lin¹, Chih-Jung Chen¹, Mu-Kuan Chen⁵, Shu-Hui Lin^{1,4}, Chung-Min Yeh^{1,4}, Kun-Tu Yeh^{1,6}

¹ Department of Surgical Pathology, Changhua Christian Hospital (Taiwan)

² Department and Graduate Institute of Veterinary Medicine, National Taiwan University (Taiwan)

³ Department of Pathology, St. Martin De Porres Hospital (Taiwan)

⁴ Jen-Teh Junior College of Medicine, Nursing and Management, Department of Medical Technology (Taiwan)

⁵ Department of Otorhinolaryngology-Head and Neck Surgery, Changhua Christian Hospital (Taiwan)

⁶ School of Medicine, Chung Shan Medical University (Taiwan)

PP087

PRIMARY ORBITAL MENINGIOMAS: A CLINICOPATHOLOGIC STUDY OF 18 CASES.

Shih-Ming Jung¹

¹ Department of Pathology, Chang Gung Memorial Hospital (Taiwan)

PP088

CALCIFYING EPITHELIAL ODONTOGENIC TUMOR: REPORT OF TWO CASES

Kang Min Han¹, Ji Eun Kwon¹, Dong Hoon Kim¹, Jai Hyang Go¹, Na Hye Myong¹, Wonae Lee¹

¹ Department of Pathology, Dankook University College of Medicine (Republic of Korea)

PP089

COMBINED MOLECULAR DIAGNOSIS FOR URINARY TUMOR CELLS TOGETHER MICROSATELLITE INSTABILITY WITH FISH

Xiao-Bin Wu¹, Ya-Min He¹, Yi-Qun Du¹, Yan-Ying Zheng¹, Yi Sun¹, Ren-Sheng Lai¹

¹ Dept. TCOM, Tumor Research Center of Chinese- Western Integrative Medicine of Jiangsu Province (China)

PP090

ANALYSIS OF JAK2 GENE MUTATION IN 100 CLINICAL TEST SAMPLES

Shu-peng Zhang¹, Ren-sheng Lai¹, Ling Xie¹, Xiao-bin Wu¹, Jie Chen¹, Su-su Zhao¹, Hui Li¹

¹ Dept. TCOM, Tumor Research Center of Chinese- Western Integrative Medicine of Jiangsu Province (China)

PP091

BAT-25 POLYMORPHISM OF CHINESE IN JIANGSU PROVINCE AND ITS IMPLICATION FOR LOCUS MICROSATELLITES INSTABILITY SCREENING

Yan-Ying Zheng¹, Ling Xie¹, Li Liu¹, Shu-Peng Zhang¹, Xiao-Bin Wu¹, Chang-Le Zhu¹, Ren-Sheng Lai¹

¹ Dept. TCOM, Tumor Research Center of Chinese- Western Integrative Medicine of Jiangsu Province (China)

PP092

GENE EXPRESSION SIGNATURES COMPARISON FOR SOLID TUMOR CHEMOTHERAPY

Rensheng Lai¹, Ling Xie¹, Xiao-Bin Wu¹, Shu-Peng Zhang¹, Yi-Qun Du¹, Su-Su Zhao¹, Yan-Ying Zheng¹, Yi Sun¹

¹ Dept. TCOM, Tumor Research Center of Chinese- Western Integrative Medicine of Jiangsu Province (China)

PP093

STUDY OF ASSOCIATION OF EGFR MUTATIONS WITH ERCC1 MRNA EXPRESSION IN NON-SMALL CELL LUNG CANCER IN CHINESE POPULATION

PP094

ASSOCIATION OF K-RAS ACTIVATING MUTATIONS WITH LOW ERCC1 GENE EXPRESSION IN GASTROINTESTINAL CANCER

Yi Sun¹, Ling Xie¹, Xiao-Bin Wu¹, Yi-Qun Du¹, Hui Li¹, Shu-Peng Zhang¹, Jian-Rong Wang¹, Ren-Sheng Lai¹

¹ Dept. TCOM, Tumor Research Center of Chinese- Western Integrative Medicine of Jiangsu Province (China)

PP095

STUDY ON THE EXPRESSION OF EML4-ALK IN NSCLC

Lu Wang¹, Su-Su Zhao¹, Hui Li¹, Yao-Hui Wang¹, Chun-Yang Liu¹, Mei Han¹, Shu-Peng Zhang¹, Ren-Sheng Lai¹

¹ Dept. TCOM, Tumor Research Center of Chinese- Western Integrative Medicine of Jiangsu Province (China)

PP096

THE 3-21 GENE QUANTITATIVE PCR EXPRESSION AND ASSOCIATED ANALYSIS ON THE CLINICAL PATHOLOGY IN SMALL SIZE BREAST CANCER

Ling Xie¹, Hui Li¹, Xiaobin Wu¹, Yanying Zheng¹, Lu Wang¹, Yi Sun¹, Jie Chen¹, Rensheng Lai¹

¹ Dept. TCOM, Tumor Research Center of Chinese- Western Integrative Medicine of Jiangsu Province (China)

PP097

VGPCR-INDUCED DIRECT AND PARACRINE ACTIVATION OF AKT/TSC/MTOR IN VGPCR NEOPLASIA

Risa Chaisuparat¹, Jiadi Hu², Bruno Jham², Silvia Montaner²

¹ Department of Oral Pathology, Faculty of Dentistry, Chulalongkorn University (Thailand)

² Department of Oncology and Diagnostic Sciences, School of Dentistry, University of Maryland (United States)

PP098

EARLY LIFE ETHANOL EXPOSURE CAUSES LONG-LASTING DISTURBANCES ON RAT MESENCHYMAL STEM CELLS BY EPIGENETIC MODIFICATIONS

Yu-Wei Leu¹, Pei-Yi Chu^{2,3,4}, Chien-Min Chen⁵, Kun-Tu Yeh², Yu-Ming Liu¹, Shaw-Jenq Tsai⁶, Tim H.M. Huang⁷, Shu-Huei Hsiao¹

¹ Department of Life Science and Institute of Molecular Biology, National Chung Cheng University (Taiwan)

² Department of Pathology, Changhua Christian Hospital (Taiwan)

³ Department and Graduate Institute of Veterinary Medicine, National Taiwan University (Taiwan)

⁴ Department of Pathology, St. Martin De Porres Hospital (Taiwan)

⁵ Division of Neurosurgery, Changhua Christian Hospital (Taiwan)

⁶ Department of Physiology, National Cheng Kung University (Taiwan)

⁷ Division of Human Cancer Genetics, The Ohio State University (United States)

PP099

PARALLEL TESTING OF HER2 GENE AMPLIFICATION ON BREAST CANCER TISSUE

Chi-Kuan Chen¹, Yu-Fen Lai¹, Tao-Yeuan Wang¹

¹ Department of Pathology, Mackay Memorial Hospital (Taiwan)

PP100

APEC-STUDY LABORATORY QUALITY CONTROL OF K-RAS GENE MUTATIONS TEST FROM PPPF SAMPLES OF COLORECTAL CANCERS

Shu-Peng Zhang¹, Lu-Jia Lin², Ling Xie¹, Yi-Qun Du¹, Xiao-Bin Wu¹, Su-Su Zhao¹, Ren-Sheng Lai¹

¹ Dept. TCOM, Tumor Research Center of Chinese- Western Integrative Medicine of Jiangsu Province (China)

² Medical Affairs Oncology Asia Pacific (Singapore)

PP101

AUTOMATED AND SIMPLE METHOD FOR PRESENTING SYNOPTIC ELEMENTS OF CANCER CHECKLIST FROM FORMATTED PATHOLOGIC REPORT

Hsin-Ho Chen^{1,2}, Chia-Fen Lee², Li-Hui Lee¹, Ching-Yu Chen², Ching-Nien Chang², Der-Ming Liou¹

¹ Institute of Biomedical Informatics, National Yang-Ming University (Taiwan)

² Chang-Hua hospital Department of Health Executive Yuan, ROC (Taiwan)

PP103

THE STUDY OF CORRELATIVES FACTOR ON THE INVASION BEHAVIOR OF HUMAN GLIOMAS

Yanfeng Zhong¹, Jiangmei Huang², Hua Du³, Yanli Tan⁴, Leiming Wang⁵, Jiangfeng You⁵, Shenglan Wang⁵, Rongfang Dong⁵

¹ Department of Pathology, Peking University Third Hospital, Health Science Center (China)

² Department of Pathology, The First Hospital Of Qinhuangdao City (China)

³ Department of Pathology, Inner Mongolia Medical College (China)

⁴ Department of Pathology, Hebei University Health Science Center (China)

⁵ Department of Pathology, Peking University Health Science Center (China)

PP104

A ROLE FOR INSULIN-LIKE GROWTH FACTOR-1 IN THE EXPRESSION OF MYELIN-SPECIFIC GENE OF SCHWANN CELL IN VITRO

Yanfeng Zhong¹, Qunli Niu², Danfeng Zheng³, Jiangfeng You³, Shenglan Wang³, Rongfang Dong³, Yan Zhang³

¹ Department of Pathology, Peking University Third Hospital, Health Science Center (China)

² Department of Pathology, Bethune International Peace Hospital (China)

³ Department of Pathology, Peking University Health Science Center (China)

PP105

CLINICOPATHOLOGICAL ANALYSIS OF SIX CASES OF EXTRAVENTRICULAR NEUROCYTOMA

Jaekyung Myung¹, Seon-ju Byun¹, Sung-Hye Park¹

¹ Seoul National University Hospital (Korea)

PP106

LATE-ONSET X-LINKED MYOPATHY WITH EXCESSIVE AUTOPHAGIC VACUOLES: A CASE REPORT

Keng-Chih Su¹, M. Anthony Verity², Tracie Pham², William H Yong², Harry Vinters², Negar Khanlou²

¹ Indiana University Ball Hospital, Pathology Program (United States)

² UCLA, Neuropathology Department (United States)

PP107

METHYLATION STATUS OF MGMT (O6-METHYLGUANINE DNA METHYLTRANSFERASE) PROMOTER IN HIGH GRADE GLIOMAS

Dong-Il Kim¹, Seyoung Moon¹, Gheeyoung Choe¹

¹ Seoul National University Bundang Hospital, Seoul National University College of Medicine (Republic of Korea)

PP108

AMONG INFLAMMATORY BOWEL DISEASES, ULCERATIVE COLITIS HAS THE HIGHEST FREQUENCY OF COLONIC MUCOSA TARGETED REGULATORY T CELLS

Haldun Umudum¹, Muammer Kara², Hakan Çermik¹

¹ Pathology, Etimesgut Military Hospital (Turkey)

² Gastroenterology, Etimesgut Military Hospital (Turkey)

PP109

MARSH TYPE 3B LESIONS HAVE THE HIGHEST FREQUENCY OF FORKHEAD BOX P3-EXPRESSING LYMPHOID CELLS (REGULATORY T CELLS) IN SMALL INTESTINAL MUCOSA OF PATIENTS WITH CELIAC DISEASE

Haldun Umudum¹, Muammer Kara², Hakan Çermik¹

¹ Pathology, Etimesgut Military Hospital (Turkey)

² Gastroenterology, Etimesgut Military Hospital (Turkey)

PP110

RSF-1/HBXAP OVEREXPRESSION IS ASSOCIATED WITH DISEASE-SPECIFIC SURVIVAL OF PATIENTS WITH GALLBLADDER CARCINOMA

Tzu-Ju Chen¹, Shun-Chen Huang¹, Hsuan-Ying Huang¹, Yu-Ching Wei¹, Chien-Feng Li^{2,3}

¹ Department of Pathology, Chang Gung Memorial Hospital-Kaohsiung Medical Center, Chang Gung University (Taiwan)

² Department of Pathology, Chi-Mei Foundation Medical Center (Taiwan)

³ Institute of Biomedical Science, National Sun Yat-Sen University (Taiwan)

PP111

SMOOTH MUSCLE MARKER EXPRESSION IN NEUROFIBROMA OF THE STOMACH

Jun Sang Bae¹, Jae Do Yang², Ha Na Choi¹, Hee Chul Yu², Woo Sung Moon¹

¹ Department of Pathology, Chonbuk National University, Medical School (Republic of Korea)

² Department of Surgery, Chonbuk National University, Medical School (Republic of Korea)

PP112

EPHRINA5 REPRESSES COLON CANCER CELL PROLIFERATION AND MIGRATION BY NEGATIVELY REGULATING EGFR STABILITY

Tong-Hong Wang³, Junn-Liang Chang⁴, Jar-Yi Ho⁵, Hsiao-Chun Wu³, Tse-Ching Chen^{1,2}

¹ Department of Anatomic Pathology, Chang Gung Memorial Hospital (Taiwan)

² Chang Gung University School of Medicine (Taiwan)

³ Tissue Bank, Chang Gung Memorial Hospital (Taiwan)

⁴ Department of Pathology & Laboratory Medicine, Taoyuan Armed Forces General Hospital (Taiwan)

⁵ Graduate Institute of Life Sciences, National Defense Medical Center (Taiwan)

PP113

PROGNOSTIC FACTORS OF THE ADVANCED ESOPHAGEAL CANCER AFTER CONCURRENT NEO-ADJUVANT CHEMO-RADIOTHERAPY FOLLOWED BY ESOPHAGECTOMY

Jo-Yu Chen¹, Ming-Yuan Lee¹, Chia-Chuan Liu¹, Chih-Hsun Shih¹, Yu-Chen Tsai¹, Nei-min Chu¹,
Dung-Ling Yu¹, Wan-Chen Tsai¹

¹ Koo Foundation Sun Yat-Sen Cancer Center (Taiwan)

PP114

PRIMARY GASTRIC KAPOSÍ'S SARCOMA IN A HIV NEGATIVE PATIENT

Chin-Hsuan Lin¹, Anna Fen-Yau Li¹

¹ Department of Pathology and Laboratory Medicine, Taipei Veterans General Hospital (Taiwan)

PP115

ADENOCARCINOMA ARISING IN A RETROPERITONEAL GASTRIC DUPLICATION CYST WITH RESPIRATORY EPITHELIUM

I Pu Juang¹, Wen-Yu Chuang², Ming-Chi Yang¹, Shien-Tung Pan¹

¹ Hsin Chu General Hospital (Taiwan)

² Chang Gung Memorial Hospital (Taiwan)

PP116

DIPEPTIDYL PEPTIDASE, A NOBLE PROGNOSTIC MARKER IN COLORECTAL CANCER

Heae Surng Park¹, Hee Jin Chang²

¹ Seoul National University College of Medicine (Republic of Korea)

² National Cancer Center (Republic of Korea)

PP117

A PILOT STUDY OF DAB2IP EXPRESSION AND ITS PROGNOSTIC SIGNIFICANCE IN COLORECTAL CANCER PATIENTS

Chung-Ta Lee¹, Nan-Haw Chow¹, Jer-Tsong Hsieh², Jenq-Chang Lee³

¹ Department of pathology, National Cheng Kung University Hospital (Taiwan)

² Department of Urology, Simmons Comprehensive Cancer Center (United States)

³ Department of Surgery, National Cheng Kung University Hospital (Taiwan)

PP118

IS HER-2 EXPRESSION A PROGNOSTIC MARKER WHICH CAN BE INCLUDED IN THE MOLECULAR CLASSIFICATION OF COLORECTAL CARCINOMAS?

Gurzu Simona¹, Jung Loan¹, Szentirmay Zoltan², Toth Erika², Bara Tivadar jr³, Bara Tivadar³

¹ Department of Pathology, University of Medicine and Pharmacy of Targu - Mures (Romania)

² Department of Pathology and Molecular Biology, National Institute of Oncology, Budapest (Hungary)

³ Department of Surgery, University of Medicine and Pharmacy of Targu - Mures (Romania)

PP119

URSODEOXYCHOLIC ACID IS A POTENT INDUCER OF APOPTOTIC AND AUTOPHAGIC CELL DEATH IN GASTRIC CANCER CELL

Song-ly Han¹, Sung-Chul Lim^{1,2}

¹ Research Center for Resistant Cells, Chosun University Medical School (Republic of Korea)

² Department of Pathology, Chosun University Medical School (Republic of Korea)

PP120

EXPRESSION OF GLUCOSE TRANSPORTER1 (GLUT1) AND UPTAKE OF 18F-FLUORO-2-DEOXYGLUCOSE (18F-FDG) IN COLORECTAL ADENOCARCINOMA

Ran Hong^{1,2}, Sungchul Lim^{1,2}

¹ Department of Pathology, School of Medicine, Chosun University (Korea)

² Research Center for Resistant Cells, School of Medicine, Chosun University (Korea)

PP121

BILE DUCTULAR PROLIFERATION IN THE GASTRIC WALL AFTER GASTRIC ULCER PENETRATION INTO THE LIVER

Eun-Jung Cha¹, Moon-Il Park¹, Jang-Sihn Sohn¹, Keum-Ha Choi²

¹ Department of Pathology, Konyang University Hospital, Konyang University School of Medicine (Republic of Korea)

² Department of Pathology, Wonkwang University Hospital, Wonkwang University School of Medicine (Republic of Korea)

PP122

A CASE OF LOW GRADE STROMAL SARCOMA OF THE PROSTATE WITH A NOVEL ARCHITECTURAL PATTERN: PERIDUCTAL SPREADING PATTERN

Soichiro Fushimi¹, Tetsuya Ogino¹, Hiroyuki Yanai¹, Akihiro Matsukawa¹

¹ Dept. of Pathology, Okayama University (Japan)

PP123

PROGNOSTIC SIGNIFICANCE OF HER-2 EXPRESSION IN PATIENTS WITH INVASIVE UPPER TRACT UROTHELIAL CARCINOMA TREATED BY RADICAL NEPHROURECTOMY

Yu-Ching Wei^{1,2}, Han-Ku Chen^{1,2}, Wei-Ming Li³

¹ Department of Pathology Chang Gung Memorial Hospital-Kaohsiung Medical Center (Taiwan)

² Chang Gung University College of Medicine (Taiwan)

³ Graduate Institute of Medicine, College of Medicine, Kaohsiung Medical University (Taiwan)

PP124

CHROMOPHOBE RENAL CELL CARCINOMA WITH NEUROENDOCRINE AND SARCOMATOID DIFFERENTIATION

Naoto Kuroda¹

¹ Kochi Red Cross Hospital (Japan)

PP125

THE ROLE OF REACTIVE OXYGEN SPECIES IN TRIPTOLIDE-INDUCED APOPTOSIS OF RENAL TUBULAR CELLS AND RENAL INJURY IN RATS

Fan Yang¹, Liang Liu¹

¹ Faculty of Forensic Medicine of Tongji Medical College of HUST (China)

PP126

PRIMARY INTRATESTICULAR MUCINOUS CYSTADENOCARCINOMA WITH PSEUDOMYXOMA PERITONEI: CASE REPORT AND REVIEW OF THE LITERATURE

You-Ting Wu¹, Ting-Ting Liu¹, Jui-Wei Lin¹, Ming-Tse Sung¹

¹ Department of Pathology, Chang Gung Memorial Hospital-Kaohsiung Medical Center (Taiwan)

PP127

TEN-YEAR TREND AND IMPROVEMENT IN DIAGNOSIS OF TRANSRECTAL BIOPSY: AN EXPERIENCE OF A MEDICAL CENTER IN TAIWAN

Ying-Ju Kuo¹, Shiou-Fu Lin¹, Chin-Chen Pan^{1,2}

¹ Department of Pathology and Laboratory Medicine, Tapei Veterans General Hospital (Taiwan)

² National Yang-Ming University (Taiwan)

PP128

COLLAPSING GLOMERULOPATHY IN IMMUNOGLOBULIN (IG)A NEPHROPATHY

Hwei-Yee Lee^{1,2}, Miguel F Palma Diaz¹, Mark A Valasek¹, Bertrand R Huber¹, Philip King³, Ilan Zawadzki⁴, Charles E Alpers¹, Behzad Najafian¹

¹ Department of Anatomic Pathology, University of Washington Medical Center (United States)

² Department of Pathology, Tan Tock Seng Hospital (Singapore)

³ Bellevue Kidney Specialists (United States)

⁴ Group Health Permanente (United States)

PP129

THE POTENTIAL SIGNIFICANCE OF ANGIOGENESIS IN THE PATHOGENESIS OF ADULT RENAL CELL CARCINOMA WITH RHABDOID FEATURES

Hsiang-Lin Song¹, Nan-Haw Chow¹

¹ National Cheng Kung University Hospital (Taiwan)

PP130

MUCINOUS TUBULAR AND SPINDLE CELL CARCINOMA OF THE KIDNEY WITH SARCOMATOID CHANGE: A CASE REPORT

Chih Ping Li¹, Yang Yang¹, Eriko Abe¹, Mieko Fujiwara¹, Koyu Suzuki¹, Yoji Nagashima²

¹ St. Luke's International Hospital (Japan)

² Yokohama City University Graduate School of Medicine (Japan)

PP131

THREE-DIMENSIONAL TOPOGRAPHIC ANALYSIS OF 904 CASES OF RADICAL PROSTATECTOMY

Kyoung Yeol Lee¹, Kyu Sang Lee¹, Gheeyoung Choe^{1,2}

¹ Department of Pathology, Seoul National University College of Medicine (Republic of Korea)

² Seoul National University Bundang Hospital, Seoul National University College of Medicine (Republic of Korea)

PP132

PAPILLARY RENAL CELL CARCINOMA OF THREE SISTERS IN A CHINESE FAMILY CARRY TRISOMY 7 AND 17 AND MET MUTATION

Jingrao Xu Xu¹, Chen He², Mei Jin¹, Zeran Yan², Hong Deng², Eugenia Haralambieva³, Andreas Rosenwald³, Zhengrong Mao²

¹ Department of Pathology, Zhejiang University (China)

² Department of Pathology and Patho-physiology, Zhejiang University (China)

³ Institute of Pathology, Wuerzburg University (Germany)

PP133

CLAUDIN EXPRESSION IN THE DIFFERENTIAL DIAGNOSIS OF RENAL CELL CARCINOMA TYPES

Seyda Erdogan¹, Bermal Hasbay Bicen¹, Gulfiliz Gonlusen¹, Bulent Soyupak²

¹ Pathology Dept., Cukurova, University (Turkey)

² Urology Dept., Cukurova University (Turkey)

PP134

STROMAL ANDROGEN RECEPTOR EXPRESSION NEGATIVELY CORRELATES WITH THE WEIGHT OF PROSTATE IN BENIGN PROSTATIC HYPERPLASIA

Qinghu Ren¹, Miao Zhang¹, Huihui Ye¹, Yirong Li¹, Garrett Daniels¹, Jianjun Wei², Jonathan Melamed¹, Peng Lee¹

¹ Department of Pathology and NYU Cancer Institute, New York University School of Medicine (United States)

² Department of Pathology, Northwestern University (United States)

PP135

TUMOR ASSOCIATED NEUTROPHILIC INFILTRATE AS A NOVEL HISTOPATHOLOGIC PARAMETER PREDICTIVE OF ADVERSE OUTCOME IN METASTATIC VERSUS PRIMARY RENAL CELL CARCINOMA

Qinghu Ren¹, Fang-Ming Deng¹, Jonathan Melamed¹, Savvas Mendrinos¹

¹ Department Of Pathology, New York University Medcial Center (United States)

PP136

IGG4-RELATED TUBULOINTERSTITIAL NEPHRITIS: RENAL BIOPSY FINDINGS IN TWO CASES, INCLUDING AN ASSOCIATION WITH MEMBRANOUS NEPHROPATHY

Hwei-Yee Lee^{1,2}, Monica Sanchez-Avila¹, Miguel F Palma Diaz¹, Chiajen J Kuan³, Megan L Troxell⁴, Madhuri Kandala⁵, Charles E Alpers¹, Kelly D Smith¹

¹ Department of Anatomic Pathology, University of Washington Medical Center (United States)

² Department of Pathology, Tan Tock Seng Hospital (Singapore)

³ North Sound Kidney Physicians (United States)

⁴ Department of Pathology, Oregon Health and Science University (United States)

⁵ Washington Nephrology and Hypertension (United States)

PP137

THE RELATIVITY RESEARCH BETWEEN SOFT TISSUE BIOMECHANICS CHARACTERISTIC AND HISTOMORPHOLOGY AND AGE AND SEX

Pinyu Li¹, Xiaoyan Wang¹, Xiaojun Yu¹, Xiaohu Xu¹

¹ Medicolegal Department, Medical College of Shantou University (China)

PP138

UNEXPECTED DEATH DUE TO DISULFIRAM-LIKE REACTION - A CASE REPORT

Hongmei Dong¹, Ji Zhang¹, Liang Ren¹, Shaohua Zhu¹

¹ Faculty of Forensic Medicine of Tongji Medical College of HUST (China)

PP139

A NOVEL ANIMAL MODEL OF TRAUMATIC SUBARACHNOID HEMORRHAGE WITH ACUTE AND CHRONIC ALCOHOLISM

Xiaoping Lai¹, Xiaojun Yu¹, Haipeng Wang¹, Guangtao Xu¹, Guihui Xu¹, Guishan Gao¹, Xiaohu Xu¹

¹ Medicolegal Department, Medical College of Shantou University (China)

PP140

QUANTITATIVE RESEARCH IN MODERN FORENSIC ANALYSIS OF DEATH CAUSE: NEW CLASSIFICATION OF DEATH CAUSE, DEGREE OF CONTRIBUTION, AND DETERMINATION OF MANNER OF DEATH

Xiaojun Yu¹, Haipeng Wang¹, Xiaoping Lai¹

¹ Medicolegal Department, Medical College of Shantou University (China)

PP141

FATAL ACONITE POISONING: FORENSIC EXPERIENCE AT A FORENSIC MEDICAL CENTER IN HUBEI, CHINA

Qian Liu¹, Liang Liu¹

¹ Faculty of Forensic Medicine of Tongji Medical College of HUST (China)

PP142

A RARE CASE OF AMNIOTIC FLUID EMBOLISM WITH SYNCYTIOTROPHOBLASTIC CELL IN PULMONARY CAPILLARIES

Tingyi Sun¹, Liang Liu¹

¹ Faculty of Forensic Medicine of Tongji Medical College of HUST (China)

PP143

SEQUENCE POLYMORPHISMS OF MTDNA HV1, HV2, AND HV3 REGIONS IN TAIWANESE HAN

Hsiao-Lin Hwa¹, Yu-Hsuan Huang^{1,2}, Chun-Yen Lin², Chun-Ying Huang², James Chun-I Lee²

¹ Department and Graduate Institute of Forensic Medicine, College of Medicine, National Taiwan Univer (Taiwan)

² Institute of Forensic Medicine, Ministry of Justice, Taiwan, R.O.C. (Taiwan)

PP144

PREVALENCE OF DRUG-FACILITATED SEXUAL ASSAULT AND INDECENCY IN TAIWAN

Pei-Yu Lin¹, Te-I Weng¹, Hsiao-Lin Hwa¹

¹ Department and Graduate Institute of Forensic Medicine, College of Medicine, National Taiwan University (Taiwan)

PP145

ANALYSIS OF MTATP6 AND MTATP8 SEQUENCE VARIATIONS IN TAIWANESE HAN

Yen-Ching Chen¹, James Chun-I Lee^{1,2}, Yu-Hsuan Huang^{1,2}, Hsiao-Lin Hwa¹

¹ Department and Graduate Institute of Forensic Medicine, College of Medicine, National Taiwan University (Taiwan)

² Institute of Forensic Medicine, Ministry of Justice, Taiwan, R.O.C. (Taiwan)

PP146

SURNAME-ASSOCIATED Y-CHROMOSOMAL STR HAPLOTYPE ANALYSIS IN THE TAIWANESE HAN POPULATION

Bao-Shun Lin¹, James Chun-I Lee^{1,2}, Yen-Ching Chen¹, Chun-Yen Lin², Hsiao-Lin Hwa¹

¹ Department and Graduate Institute of Forensic Medicine, College of Medicine, National Taiwan Univers (Taiwan)

² Institute of Forensic Medicine, Ministry of Justice, Taiwan, R.O.C. (Taiwan)

PP147

DIATOM ANALYSIS IN THE FLUID OF SPHENOID SINUSES AND LUNG TISSUES FROM SUSPECTED DROWNING CASES

Wen-Chien Yen¹, CY Lin², TY Huang², YJ Yu¹, CT Shun¹, J T Wu³, T L Chou³, James Chun-I Lee^{1,2}

¹ Department and Graduate Institute of Forensic Medicine, National Taiwan University (Taiwan)

² Institute of Forensic Medicine, Ministry of Justice (Taiwan)

³ Biodiversity Research Center, Academia Sinica, ROC (Taiwan)

PP148

DNA DEGRADATION OF IMMERSSED RIB BONES

Po-Hao Hsu¹, Chun-Yen Lin², Tsun-Ying Huang², Yu-Jen Yu¹, Chia-Tung Shun¹,
James Chun-I Lee^{1,2}

¹ Department and Graduate Institute of Forensic Medicine, National Taiwan University (Taiwan)

² Institute of Forensic Medicine, Ministry of Justice (Taiwan)

PP149

STUDY ON THE TIME CHANGES OF BIOMECHANICS OF SOFT TISSUE IN RATS' CORPSE

Yong Wan¹, Shuwei Yu¹, Xiaojun Yu¹

¹ Medicolegal Department, Medical College of Shantou University (China)

PP150

TIME OF BIOMECHANICAL CHANGES OF SOFT TISSUES AND THE RELATIONSHIP WITH PMI IN RATS' CORPSE IN WATER

Hong Qian¹, Jiawen Wang¹, Xiaojun Yu¹

¹ Medicolegal Department, Medical College of Shantou University (China)

PP152

USEFUL ULTRASONIC MICROSCOPIC (UM) IMAGES REFLECTING TISSUE ELASTICITY FOR NEW HISTOLOGICAL PARAMETER

Katsutoshi Miura¹

¹ Hamamatsu University, School of Medicine (Japan)

PP153

DISTRIBUTION OF METHAMPHETAMINE IN ACUTE AND SUBACUTE ETHANOL-MA POLYDRUG USE RATS

Man Liang¹, Na Zheng², Liang Liu¹

¹ Faculty of Forensic Medicine, Tongji Medical College, HUST (China)

² Department of Forensic Medicine, Shantou University Medical College (China)

PP154

CHARACTERIZATION OF A GENE THAT SUPPRESSES OXIDATIVE STRESS-INDUCED CELL DEATH

Michiyo Nagano-Ito¹, Yusuke Nakazato¹, Shinichi Ichikawa¹

¹ Niigata University of Pharmacy and Applied Life Sciences (Japan)

PP155

OVER EXPRESSION OF TIF1- Γ IN PAPILLARY THYROID CARCINOMA

Wei Sun¹, Xiangtian Kong¹, Ruliang Xu¹, Melissa Yee¹, Daniel Roses¹, Eric Y Han¹,
Beverly Wang¹

¹ Departments of Pathology and Surgery, New York University Langone Medical Center (United States)

PP156

CLINICOPATHOLOGICAL AND MICROBIOLOGICAL CHARACTERISTICS OF PATIENTS WITH KERATITIS CAUSED BY NONTUBERCULOUS MYCOBACTERIA IN TAIWAN

Cheng-Hsiang Hsiao¹, Po-Ren Hsueh²

¹ Department of Pathology, National Taiwan University Hospital (Taiwan)

² Departments of Laboratory Medicine and Internal Medicine, National Taiwan University College of Medicine (Taiwan)

PP157

THE SIGNIFICANCE OF MICRORNA LET-7B, MIR30C, AND MIR-200C EXPRESSION IN BREAST CANCERS

Sung-Min Chun¹, Junghyeon Lee¹, Chulwhan Kim¹, In Sun Kim¹

¹ Department of Pathology, Korea University Anam Hospita (Republic of Korea)

PP158

NANOMECHANICAL PROFILE AS A NOVEL BIOMARKER FOR CYTOLOGICAL ANALYSIS OF CANCER

Corina Kwan¹, Henry Tsai¹, Levin Mary¹, Yusheng Jin¹, James Gimzewski¹, Jianyu Rao¹

¹ Cytopathology Division, Department of Pathology and Laboratory Medicine, UCLA (United States)

PP159

IMMUNOFLUORESCENCE ON PARAFFIN EMBEDDED PAEDIATRIC RENAL BIOPSIES

Lynette Moore^{1,2}, LJ Mills¹

¹ Surgical Pathology, SPathology, Women's and Children's Hospital (Australia)

² University of Adelaide (Australia)

PP160

PROGNOSTIC VALUE OF HER-2/NEU AND CLINICOPATHOLOGIC FACTORS FOR PROGRESSION AND PROSTATE CANCER-SPECIFIC DEATH IN CHINESE MEN AFTER EXPOSURE TO HORMONAL THERAPY

YiFen Zhang¹, YangBo Guan¹, Bin Yang¹, HongYan Wu¹, YuTian Dai¹, ZeYu Sun¹

¹ Affiliated Drum Tower Hospital of Nanjing University Medical School, Nanjing (China)

PP161

FORENSIC PATHOLOGY IN THE PHILIPPINES

Raquel Fortun¹

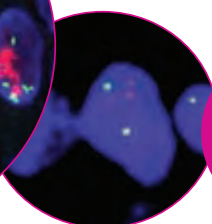
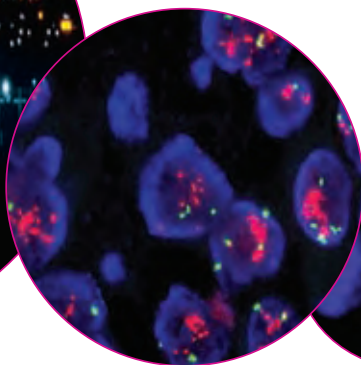
¹ Department of Pathology, College of Medicine, University of the Philippines Manila (Philippines)



PathVysion HER-2 DNA Probe Kit: Clear Guidance for Pathologists

Choose Primary HER-2 FISH:
Consistent • Accurate • Reliable Results

Over the last decade, the PathVysion HER-2 FISH Test has contributed to the advancement of “Pharmacogenomics” by accurately and objectively identifying HER-2 positive patients.^{1,4}



PATHVYSION[®]
HER-2 FISH Test for Breast Cancer



≥ 2.0 Amplified (FISH+)
A candidate for Trastuzumab.

< 2.0 Not Amplified (FISH-)
Not a candidate for Trastuzumab.

Images are examples of results. Individual results may vary.

INTENDED USE

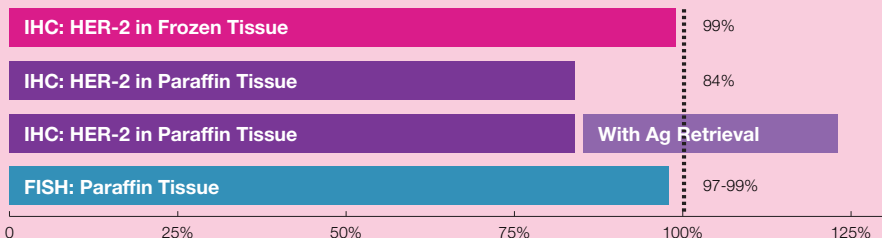
PathVysion HER-2 DNA Probe Kit (PathVysion Kit) is designed to detect amplification of the HER-2/neu gene via fluorescence in situ hybridization (FISH) in formalin-fixed, paraffin-embedded human breast cancer tissue specimens. Results from the PathVysion Kit are intended for use as an adjunct to existing clinical and pathologic information currently used as prognostic factors in stage II, node-positive breast cancer patients. The PathVysion Kit is further indicated as an aid to predict disease-free and overall survival in patients with stage II, node positive breast cancer treated with adjuvant cyclophosphamide, doxorubicin, and 5-fluorouracil (CAF) chemotherapy. The PathVysion Kit is indicated as an aid in the assessment of patients for whom HERCEPTIN[®] (Trastuzumab) treatment is being considered (see HERCEPTIN[®] package insert).

LIMITATIONS

1. The PathVysion Kit has been optimized only for identifying and quantifying chromosome 17 and the HER-2/neu gene in interphase nuclei from formalin-fixed, paraffin-embedded human breast tissue specimens. Other types of specimens or fixatives should not be used.
2. The performance of the PathVysion Kit was validated using the package insert procedures. Modifications to these procedures may alter the performance of the assay.
3. Performance characteristics of the PathVysion Kit have been established only for node positive patients receiving the designated regimens of CAF and for metastatic breast cancer patients being considered for HERCEPTIN therapy. Performance with other treatment regimens has not been established.
4. The clinical interpretation of any test results should be evaluated within the context of the patient's medical history and other diagnostic laboratory test results.
5. FISH assay results may not be informative if the specimen quality and/or specimen slide preparation is inadequate.
6. Technologists performing the FISH signal enumeration must be capable of visually distinguishing between the orange and green signals.

FISH Demonstrates High Concordance with Known HER-2 Status In Standard Biopsy Specimens

Schematic Summary of HER-2 Assay Results: Concordance with Known HER-2 Positive Status



Estimated Concordance or Accuracy*

*Based on Results from Science, 1989; Cancer Res., 1993; Cancer Res., 1994; Journal of Clinical Oncology, 1997; Journal of Clinical Oncology, 2002; Clinical Cancer Res., 2005.

The choice is clear:

- The PathVysion HER-2 DNA Probe Kit provides accurate and reproducible results.⁴
- FISH can help overcome inherent technical and interpretative limitations of other techniques, such as IHC.⁴
- Recent literature states that antigen retrieval techniques used with IHC may be associated with increased false positive results (shown as light purple bar).¹

Patients with HER-2 positive FISH assay results demonstrate high response rates to Herceptin® treatment^{1,2,3}

References

1. Sauter G, Lee J, et al. Guidelines for Human Epidermal Growth Factor Receptor 2 Testing: Biologic and Methodologic Considerations. J Clin Oncol. 2009; 27:1323-1333
2. Press M, Sauter G, Bernstein L, et al. Diagnostic evaluation of HER-2 as a molecular target: an assessment of accuracy and reproducibility of laboratory testing in large, prospective, randomized clinical trials. Clin Cancer Res. 2005;11: 6598-6607.
3. Mass RD, Press MF, Anderson S, et al. Evaluation of clinical outcomes according to HER2 detection by fluorescence in situ hybridization in women with metastatic breast cancer treated with trastuzumab. Clin Breast Cancer. 2005;6:240-246.
4. PathVysion package insert.

WARNING

HERCEPTIN therapy selection NOTE: All of the patients in the HERCEPTIN clinical trials were selected using an investigational immunohistochemical assay (CTA). None of the patients in those trials were selected using the PathVysion assay. The PathVysion assay was compared to the CTA on a subset of clinical trial samples and found to provide acceptably concordant results. The actual correlation of the PathVysion assay to HERCEPTIN clinical outcome in prospective clinical trials has not been established.

Adjuvant therapy selection The PathVysion Kit is not intended for use to screen for or diagnose breast cancer. It is intended to be used as an adjunct to other prognostic factors currently used to predict disease-free and overall survival in stage II, node-positive breast cancer patients and no treatment decision for stage II, node-positive breast cancer patients should be based on HER-2/neu gene amplification status alone. Selected patients with breast cancers shown to lack amplification of HER-2/neu may still benefit from CAF (cyclophosphamide, doxorubicin, 5-fluorouracil) adjuvant therapy on the basis of other prognostic factors that predict poor outcome (e.g. tumor size, number of involved lymph nodes, and hormone receptor status). Conversely, selected patients with breast cancers shown to contain gene amplification may not be candidates for CAF therapy due to preexisting or intercurrent medical illnesses.

Required training Abbott Molecular will provide training in specimen preparation, assay procedure, and interpretation of FISH testing of the HER-2 gene for inexperienced users. It is also recommended that a laboratory that has previously received training but now has new personnel performing the assay request training for the new users.

Campto-based Regimens + Target Therapy 為mCRC的最佳建議療法之一



處方說明 抗癌妥靜脈輸注濃縮液 CAMPTO Conc. Solution For I.V. Infusion / 本藥限由醫師使用

成分含量：

CAMPTO小瓶含有40 mg、100 mg或300 mg的irinotecan hydrochloride, trihydrate

適應症：晚期性大腸直腸癌之第一線治療藥物：

- 與5-FU和folinic acid合併，使用於未曾接受過化學治療之患者。
- 單獨使用於曾接受5-FU療程治療無效之患者。
- 與cetuximab併用，治療曾接受含irinotecan之細胞毒性療法治療失敗且具有表皮生長因子接受體(EGFR)表現型KRAS野生型轉移性大腸直腸癌患者
- 與5-fluorouracil、folinic acid及bevacizumab合併治療，做為轉移性大腸癌或直腸癌患者的第一線治療藥物。
- 與capecitabine合併治療，做為轉移性大腸直腸癌患者的第一線治療藥物。

建議劑量：

- 單方藥物治療(已接受過化學治療之患者)：
CAMPTO的建議劑量為350 mg/m²，靜脈輸注30至90分鐘，每三週給藥一次
- 合併藥物治療(未曾接受過化學治療之患者)：
CAMPTO加5FU/FA，每二週給藥一次
CAMPTO的建議劑量為180 mg/m²，每二週給藥一次，靜脈輸注30-90分鐘，然後輸注folinic acid和5-fluorouracil。

特殊群體：

- 肝功能不全的患者：膽紅素在正常範圍上限值(ULN)的1.5倍以內時，CAMPTO的建議劑量為350 mg/m²。1.5-3倍時，建議劑量為200 mg/m²。必須經常血液常規檢查(CBC)。
- 腎功能損傷之病患：尚未對此群體進行研究。
- 老年人：應謹慎選擇劑量並密切監視其病情。

禁忌

- 慢性發炎性腸道疾病及/或腸阻塞(參閱《警語及特殊使用注意事項》)
- 對irinotecan hydrochloride trihydrate或任何一種CAMPTO的賦形劑有嚴重過敏

反應之病史

- 懷孕與授乳期(參閱《懷孕與授乳》及《警語及特殊使用注意事項》)
- 膽紅素>3倍正常範圍上限值(參閱《警語及特殊使用注意事項》)
- 嚴重骨髓功能衰竭
- WHO體能狀態評分>2
- 與聖約翰草(St. John's Wort)併用(參閱《藥物交互作用及其他交互作用》)
- 關於cetuximab或bevacizumab或capecitabine的其它使用禁忌，請參見這些產品的產品資訊。

北衛藥廣字第

號



Pfizer Limited

輝瑞大藥廠股份有限公司

台北總公司
新北市251淡水區中正東路二段177號
TEL:(02)2809-7979 FAX:(02)2809-7676

台中辦事處
台中市408公益路二段51號10樓A室
TEL:(04)2328-2818 FAX:(04)2320-5438

高雄辦事處
高雄市802苓雅區四維三路6號16樓A室
TEL:(07)535-7979 FAX:(07)535-7676

詳細處方資料備索

Control cancer, unlock possibilities

適應症：

SUTENT[®] 適用於 imatinib mesylate 治療期間出現疾病惡化或對該藥出現耐受性不佳之腸胃道間質腫瘤 (GIST)；治療晚期或移轉性腎細胞癌 (病理上為亮細胞癌 (clear cell carcinoma))

capsules 12.5 mg
SUTENT[®]
sunitinib malate

紓癌特膠囊12.5毫克
SUTENT[®] Capsules 12.5 mg

- | | |
|----------------|--|
| 禁忌症： | SUTENT [®] 禁用於對 sunitinib malate 或本藥任何其他成分過敏之患者。 |
| 藥品交互作用： | SUTENT [®] 與 CYP3A4 強抑制劑併用可能會增加 sunitinib 的濃度。葡萄柚也會增加 sunitinib 的血漿濃度。
SUTENT [®] 與 CYP3A4 誘發劑併用可能會減低 sunitinib 的濃度。聖約翰草可能會不可預料地減低 SUTENT [®] 的血漿濃度。 |
| 警語： | SUTENT [®] 抑制血管新生可能會對妊娠造成不良的影響。
SUTENT [®] 在孕婦尚無適當且控制良好的研究。應建議有生育能力的婦女，在接受 SUTENT [®] 治療期間要避免懷孕。
迄今尚未知 SUTENT [®] 或它的主要活性代謝產物會不會分泌到人類乳汁中，故應建議婦女於使用 SUTENT [®] 期間不要授乳。 |

詳細處方資料備索
北衛藥廣字第10004005號



Pfizer Limited

輝瑞大藥廠股份有限公司

台北總公司
新北市251淡水區中正東路二段177號
TEL: (02)2809-7979 FAX: (02)2809-7676

台中辦事處
台中市408公益路二段51號10樓A室
TEL: (04)2328-2818 FAX: (04)2320-5438

高雄辦事處
高雄市802苓雅區四維三路6號16樓A室
TEL: (07)535-7979 FAX: (07)535-7676

SUT-FM-0904005



肢端肥大症治療的領導品牌

- 1. 證實有效同時降低血清 GH 及 IGF-1¹
- 2. 證實可縮小腦下垂體腺瘤
- 3. 顯著改善肢端肥大症臨床症狀¹
- 4. 緩釋劑型可使血中濃度長達 28 天¹
- 5. 起始劑量為 20mg 可依血中 GH 和 IGF-1 調整劑量至 10mg 或 30mg 以達到更好的控制¹



STRENGTH, BUILT ON EVIDENCE.



NOVARTIS
 ONCOLOGY

台灣諾華股份有限公司

台北市10062仁愛路二段99號11樓 TEL: (02) 2341-6580 FAX: (02) 2343-2095
 諾華健康諮詢中心 0800-880-870 <http://www.novartis.com.tw>

藥業藥師字第0226569號 醫藥藥師字第022657號 藥業藥師字第022655號 北市藥業藥師字第10001059號



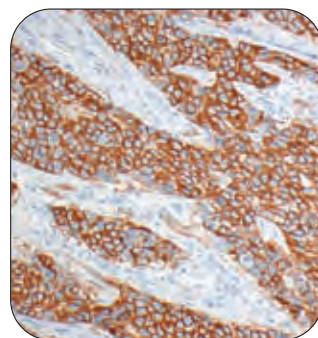
Because your patients can count on the right diagnosis sooner.

When it comes to delivering the best diagnosis, accurate results are just as important as turn-around-time.

The Thermo Scientific STP 420ES Tissue Processor allows you to process tissue in as little as 90 minutes—without high temperatures or microwaves. Innovative design and patented rotational agitation improve the efficiency of tissue-fluid exchange rates by up to 30%. When combined with Fast Flex reagents, the STP 420ES Tissue Processor enables you to meet the demand for speed while maintaining the need for accuracy.

Together, the **STP 420ES Tissue Processor** and **Fast Flex Reagents** deliver quality, same-day results that comforts your patients and support you—the face behind the glass.

Call 800-522-7270 or visit www.thermoscientific.com/pathology.



HER2 IHC

Labeled breast tissue processed using Fast Flex reagents on the STP 420ES Tissue Processor.

Moving science forward

Thermo
SCIENTIFIC
Part of Thermo Fisher Scientific

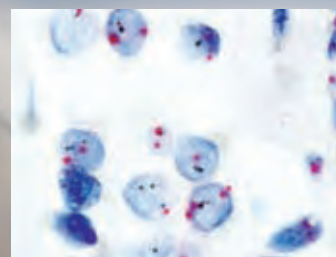
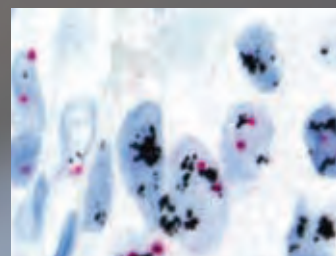
Ventana

INFORM HER2 & TOPO II Probes

A brighter outlook for breast cancer patients begins with a better view for the pathologist.

Ventana *in situ* hybridisation (ISH) technology brings standardisation to tissue-based genomic testing in your laboratory, and simplifies slide interpretation using brightfield microscopy.

This INFORM HER2 ISH and TOPO II ISH assays give you increased confidence and reproducibility in automated breast cancer testing.



Bringing automated
genomic testing to your lab
INFORM HER2 & TOPO II DNA Probes